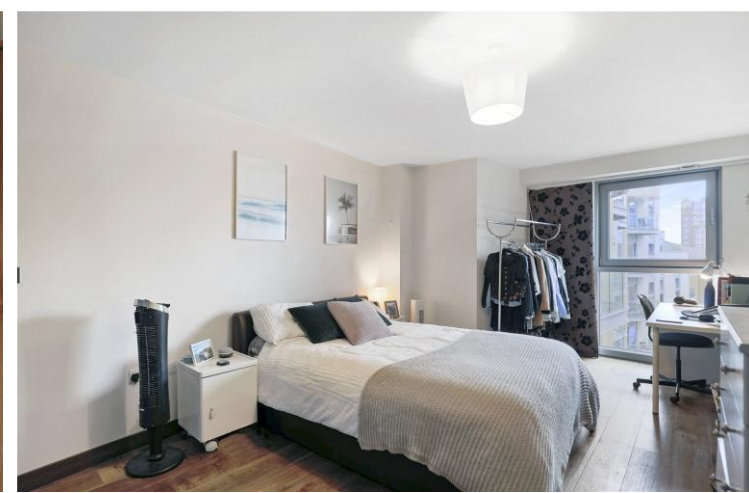




Orbis Wharf
Bridges Court Road, SW11

CHESTERTONS





This is a superb two-bedroom apartment located within Orbis Wharf, part of the popular Bridges Wharf development on the Thames.

Finished to a high specification throughout, this apartment features open plan living incorporating a well-appointed kitchen and reception room. Two double bedrooms provides an integrated wardrobe. Both the reception room and the bedroom benefit from the wonderful river views, the reception room also being complemented by a private balcony overlooking the communal gardens.

Orbis Wharf occupants are serviced by a 24-hour concierge, and this apartment comes with secure allocated underground parking.

Located directly on the River Thames, Bridges Wharf is within walking distance of Clapham Junction and Wandsworth Town Stations and has access to the Thames Clipper via the pier at Plantation Wharf a short walk away. This apartment also provides for easy access to Battersea Park.

- Two Double Bedrooms
- Private Balcony
- Concierge
- Lift
- Short walk to Clapham Junction

£2,810 pcm

Additional tenant charges apply (fees apply to non-AST tenancies only)

Tenancy Agreement Fee: £300

References per Tenant/Guarantor: £60

Inventory check (approx. £100 – £250 inc. VAT)

chestertons.co.uk/property-to-rent/applicable-fees

Energy Efficiency Rating		Current	Potential
100-109	A		
81-100	B		
62-81	C		
43-62	D	68	69
25-43	E		
10-25	F		
1-10	G		

Not energy efficient - higher running costs

England, Scotland & Wales EU Directive 2002/91/EC

Minimum Term: 12 months
Deposit Required: £3,242.31
Local Authority: London Borough of Wandsworth
Council Tax Band: E
EPC Rating: D
Furnished

Chestertons Battersea Park & Nine Elms Lettings

62-64 Battersea Bridge Road

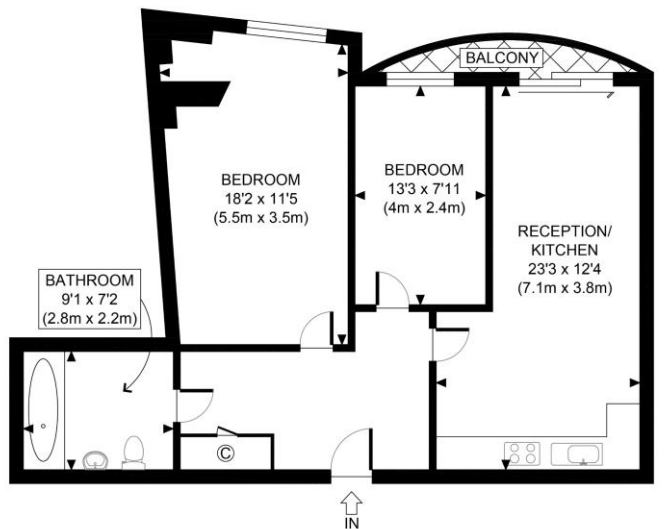
London

SW11 3AG

batterseapark@chestertons.co.uk

02030408269

chestertons.co.uk



FOURTH FLOOR
GROSS INTERNAL
FLOOR AREA 760 SQ FT



APPROX. GROSS INTERNAL FLOOR AREA 760 SQ FT / 71 SQM		Orbis Wharf	
Disclaimer: Floor plan measurements are approximate and are for illustrative purposes only.		date	04/09/20
While we do not doubt the floor plan accuracy and completeness, you or your advisors should conduct a careful, independent investigation of the property in respect of monetary valuation			

Chesterton UK Services Limited trading as Chestertons for themselves and for the vendor of this property whose agents they are, give notice that (i) these particulars do not constitute any part of an offer or contract, (ii) all statements contained within these particulars are made without responsibility on the part of Chestertons or the vendor, (iii) whilst made in good faith, none of the statements contained within these particulars are to be relied upon as a statement or representation of fact, (iv) any intending purchasers must satisfy themselves by inspection or otherwise as to the correctness of each of the statements contained within these particulars, (v) the vendor does not make or give either Chestertons or any person in their employment any authority to make or give representation or warranty whatsoever in relation to this property. Wide angle lenses may be used. ©Copyright Chestertons | Chesterton Global Ltd | Registered Office 5th Floor, The Lantern, 75 Hampstead Road, London, NW1 2PL Registered Company Number 05334580.



This paper is
100% recyclable