



South Quay, Abingdon

Connells SIGNATURE



South Quay, Abingdon

Stunning Marina-Side Family Home in a Sought-After Abingdon

Location

Occupying an enviable position overlooking the marina, this substantial five-bedroom link-detached home offers over 1,700 sq. ft. of versatile accommodation arranged across three floors.

Combining generous living space with picturesque waterside views, the property provides an exceptional opportunity for families seeking both space and location.

The ground floor features a spacious dual-aspect sitting room, ideal for entertaining and family living, alongside a separate reception room offering flexibility as a dining room, playroom or snug. A dedicated

study provides the perfect home-working environment, while the kitchen is well-positioned to serve the main living areas. A cloakroom completes the ground floor accommodation.

On the first floor are four bedrooms and the family bathroom. Bedroom two enjoys direct access to a private balcony, offering a wonderful vantage point from which to take in the marina views.

The second floor is dedicated to an impressive principal bedroom suite, complete with en-suite shower room and fitted storage, creating a peaceful retreat away from the rest of the home.

Externally, the property benefits from private outdoor space and enjoys a highly

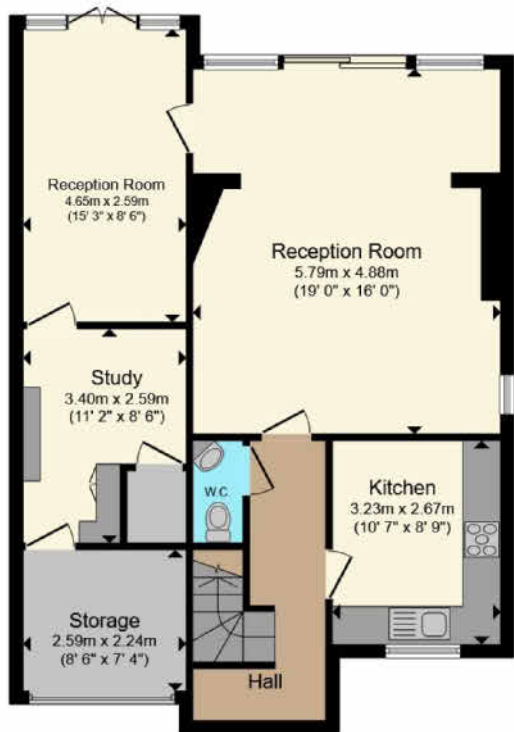
desirable waterside setting, with attractive walks, local amenities and Abingdon town centre all within easy reach.

Key Features

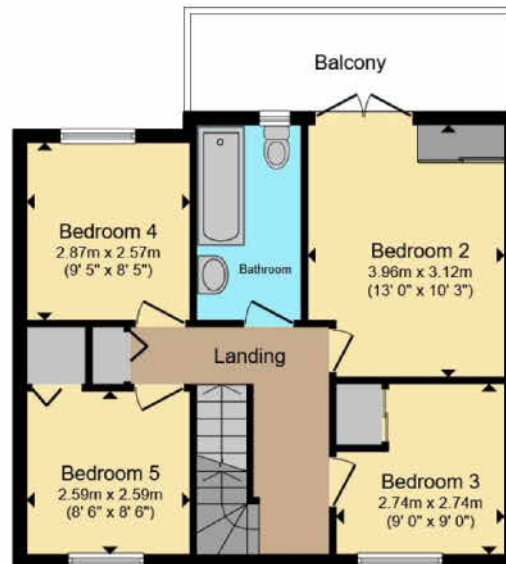
- Marina-front position with attractive waterside views
- Five bedrooms arranged over three floors
- Principal bedroom with en-suite shower room
- Balcony accessed from bedroom two
- Spacious sitting room and additional reception room
- Separate study/home office
- Ground floor cloakroom
- Over 1,700 sq. ft. of accommodation
- Sought-after Abingdon location
- Ideal family home with versatile living space



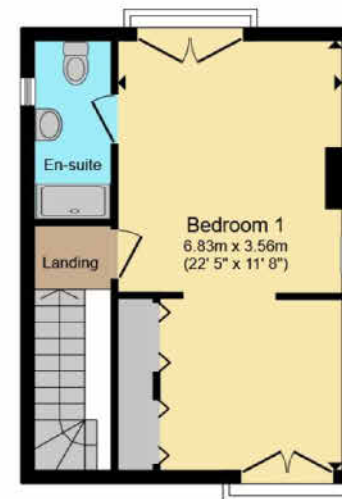




Ground Floor



First Floor



Second Floor

Total floor area 159.2 m² (1,713 sq.ft.) approx

This floor plan is for illustrative purposes only. It is not drawn to scale. Any measurements, floor areas (including any total floor area), openings and orientation are approximate. No details are guaranteed, they cannot be relied upon for any purpose and they do not form part of any agreement. No liability is taken for any error, omission or misstatement. A party must rely upon its own inspection(s). Powered by www.propertybox.io

Connells

Connells SIGNATURE

South Quay, Abingdon

Stunning Marina-Side Family Home in a Sought-After Abingdon Location

Guide Price

£650,000

EPC Rating: B

Council Tax Band: F

Tenure: Freehold

Connells SIGNATURE

To view this property please contact us on

01235 555611

or email abingdon@connells.co.uk

11 High Street, Abingdon, Oxfordshire OX14 5BB

CONNELLS.CO.UK



1. MONEY LAUNDERING REGULATIONS Intending purchasers will be asked to produce identification documentation at a later stage and we would ask for your co-operation in order that there is no delay in agreeing the sale. 2. These particulars do not constitute part or all of an offer or contract. 3. The measurements indicated are supplied for guidance only and as such must be considered incorrect. Potential buyers are advised to recheck measurements before committing to any expense. 4. We have not tested any apparatus, equipment, fixtures or services and it is in the buyers interest to check the working condition of any appliances. 5. Where an EPC, or a Home Report (Scotland only) is held for this property, it is available for inspection at the branch by appointment. If you require a printed version of a Home Report, you will need to pay a reasonable production charge reflecting printing and other costs. 6. We are not able to offer an opinion either written or verbal on the content of these reports and this must be obtained from your legal representative. 7. Whilst we take care in preparing these reports, a buyer should ensure that his/her legal representative confirms as soon as possible all matters relating to title including the extent and boundaries of the property and other important matters before exchange of contracts.

