



Borough High Street, SE1 £850,000

A very rarely available Victorian Conversion in the historic Town Hall Chambers, with wonderful high ceilings, large sash windows and a triple aspect, taking in the Shard and looking down the length of Borough High Street. Accommodation includes a spacious open plan reception room, two double bedrooms and two bathrooms.

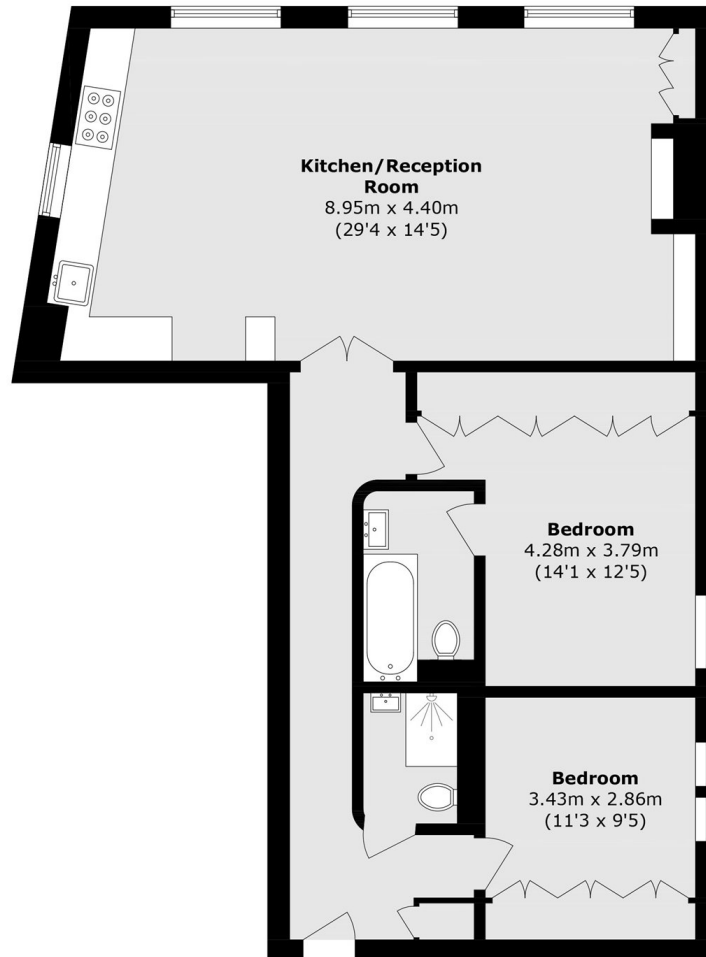
Town Hall Chambers is located less than 100 yards from Borough Market and London Bridge Underground. London Bridge Mainline Station, the Southbank and numerous local amenities are all on your doorstep.

Features

Share of Freehold
Two Double Bedrooms
Open Plan Living Space

Unique Aspect/Views
Excellent Transport Links
Chain Free Sale

Borough High Street,
London, SE1



Third Floor

Total area (approx.): 82.4 sq. m (886.9 sq. ft)