



Connells

Westmorland Avenue
AYLESBURY



Property Description

Located in the highly sought-after Bedgrove area, this newly refreshed three-bedroom semi-detached home presents a fantastic opportunity for buyers seeking a modern and beautifully maintained property. Recently redecorated throughout, the home offers a bright, contemporary feel from the moment you step inside.

An entrance porch opens into a welcoming hallway with stairs to the first floor. The front-facing reception room is filled with natural light, and a stylish open archway leads through to a second reception space, complete with French doors that open directly onto the rear garden. The modern kitchen is fitted with sleek white gloss units and offers space for a fridge freezer, a useful understairs cupboard, and access to the garden via the back door, while a separate utility room provides additional practicality with plumbing for a washing machine.

Upstairs, the property features three well-proportioned bedrooms, all served by a recently updated contemporary family bathroom boasting a bath with mixer tap and overhead shower.

Outside, the fully enclosed rear garden provides a private retreat with a well-kept lawn and a patio area ideal for al fresco dining. To the front, the home benefits from driveway parking and a garage equipped with power, lighting, and an up-and-over door—

perfect for storage or secure parking.

Entrance Porch

Door to front

Entrance Hall

Door to front

Radiator

Lounge

11' 10" x 12' 8" (3.61m x 3.86m)

Window to front

Wood effect flooring

Radiator

Dining Room

9' 11" x 10' 6" (3.02m x 3.20m)

French doors to rear

Radiator

Wood effect flooring

Kitchen

7' 8" x 10' 2" (2.34m x 3.10m)

Door and window to rear

Wall and base units

Part tiling

Sink/drainer

Electric oven and hob

Understairs storage

Space for fridge/freezer

Utility Room

3' 10" x 7' 11" (1.17m x 2.41m)

Window to side

Door to rear

Plumbing for washing machine

Landing

Window to side

Loft access

Bedroom One

10' 2" x 12' 8" (3.10m x 3.86m)

Window to front

Radiator

Carpet underfoot

Bedroom Two

9' 11" x 10' 6" (3.02m x 3.20m)

Window to rear

Radiator

Carpet underfoot

Bedroom Three

7' 8" x 8' 8" (2.34m x 2.64m)

Window to rear

Radiator

Carpet

Bathroom

Window to rear

Bath/mixer with shower overhead

Wash hand basin

WC

Airing cupboard

Part tiling

Rear Garden

Enclosed fencing

Patio area

Laid lawn

Parking

Driveway

Garage

8' 2" x 15' 10" (2.49m x 4.83m)

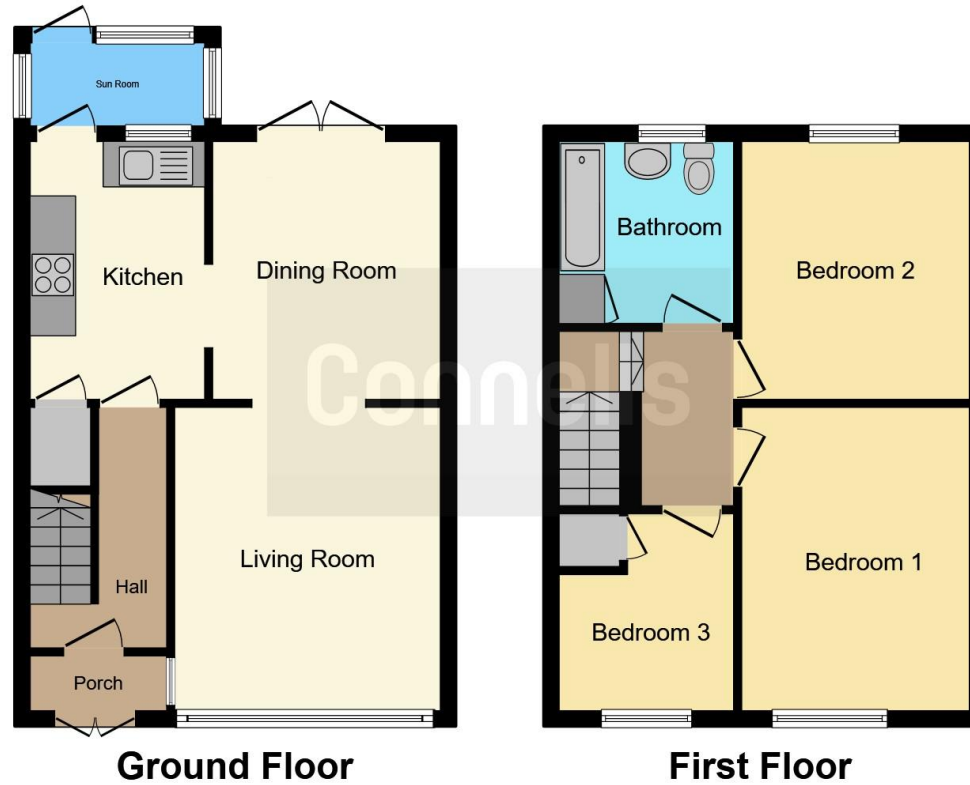
Up and over door

Power and lighting









This floor plan is for illustrative purposes only. It is not drawn to scale. Any measurements, floor areas (including any total floor area), openings and orientation are approximate. No details are guaranteed, they cannot be relied upon for any purpose and they do not form part of any agreement. No liability is taken for any error, omission or misstatement. A party must rely upon its own inspection(s). Powered by www.focalagent.com

To view this property please contact Connells on

T 01296 395 111
E aylesbury@connells.co.uk

2 Temple Street
 AYLESBURY HP20 2RH

EPC Rating: D Council Tax
 Band: C

Tenure: Freehold

view this property online connells.co.uk/Property/ALS312740



1. MONEY LAUNDERING REGULATIONS Intending purchasers will be asked to produce identification documentation at a later stage and we would ask for your co-operation in order that there will be no delay in agreeing the sale. 2. These particulars do not constitute part or all of an offer or contract. 3. The measurements indicated are supplied for guidance only and as such must be considered incorrect. Potential buyers are advised to recheck measurements before committing to any expense. 4. We have not tested any apparatus, equipment, fixtures, fittings or services and it is in the buyers interest to check the working condition of any appliances.

Connells Residential is registered in England and Wales under company number 1489613, Registered Office is Cumbria House, 16-20 Hockliffe Street, Leighton Buzzard, Bedfordshire, LU7 1GN. VAT Registration Number is 500 2481 05.

See all our properties at www.connells.co.uk | www.rightmove.co.uk | www.zoopla.co.uk

Property Ref: ALS312740 - 0007