



## LINDEN GARDENS, W2

£1,150,000

Prestigious Hyde Park location

Grand reception room

Exceptionally quiet position

Impressive ceiling height

No onward chain

EPC- D

# ABOUT THE PROPERTY

Positioned within an elegant stucco-fronted period building in a sought-after cul-de-sac in the heart of Notting Hill, this raised ground floor apartment effortlessly blends classic character with modern comfort.

Linden Gardens is wonderfully positioned just off Notting Hill Gate, ideally positioned for the fantastic array of restaurants, cafes, and boutique shops of the area. The green open spaces of Kensington Gardens are just a short stroll away whilst there are excellent transport links with easy access to the Central, Circle and District lines at Notting Hill Gate.

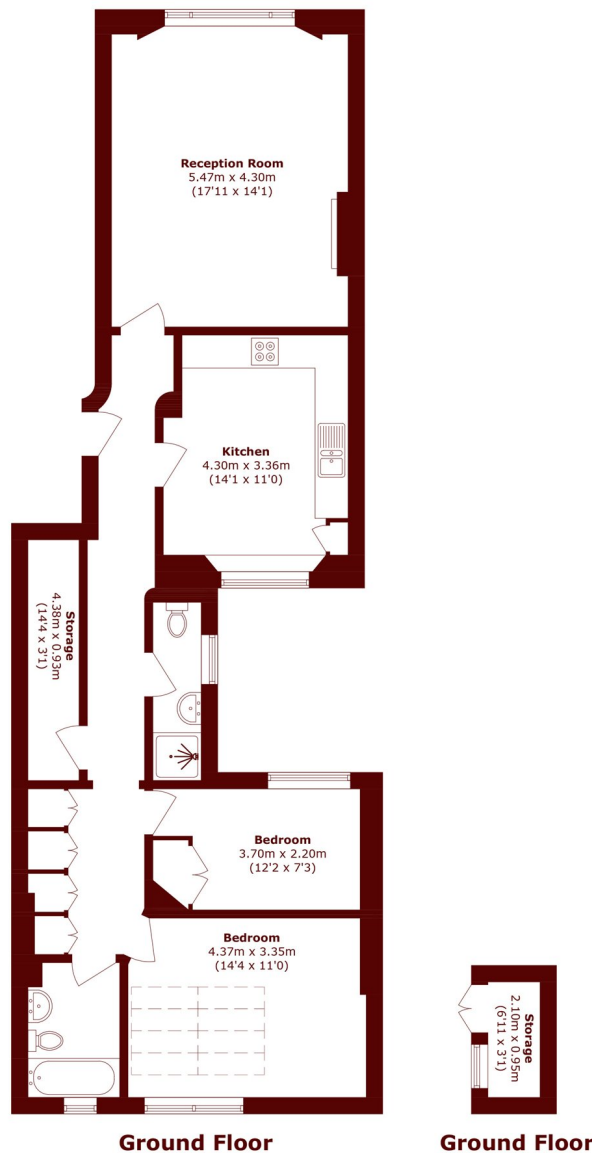








# STEP INSIDE LINDEN GARDENS



Total area (approx.): 90.9 sq. m (978.4 sq. ft)

Storage area (approx.): 3.2 sq. m (34.4 sq. ft)

**Notting Hill**  
020 7313 2890

Energy Rating: D We aim to make our particulars both accurate and reliable. However, they are not guaranteed; nor do they form part of an offer or contract. If you require clarification on any points then please contact us, especially if you're traveling some distance to view. Please note that appliances and heating systems have not been tested and therefore no warranties can be given as to their good working order

**MARSH &  
PARSONS**