



**Francis Road, Horndean Waterlooville PO8 0HZ**

**welcome to**

## **Francis Road, Horndean Waterlooville**

Immaculately presented two-bedroom detached bungalow offering over 1,600 sq ft of versatile accommodation, including outbuildings, garage and driveway parking, with a summerhouse, elevated views over Clanfield, and no forward chain.

### **Entrance Hall**

From side of the property. Laminate floor, storage cupboard.

### **Boot Room**

Laminate flooring, radiator. Space for shoes and coats.

### **Lounge**

Double glazed window to rear aspect. Laminate flooring, feature wall with beams and on to part of the ceiling, radiator, stone fireplace with hearth and mantel over. Through to dining room.

### **Dining Room**

Double glazed window to side and rear aspects. Skylight, laminate flooring, radiator. Through to kitchen.

### **Kitchen**

Skylight. Range of wall and base units with work surface over incorporating sink unit with mixer tap over. Laminate flooring, heated towel rail. Built-in low level oven with hob over, fridge/freezer and dishwasher. Through to utility room.

### **Utility Room**

Double glazed window to rear aspect. Cupboards with work surface over incorporating one and a half bowl sink unit with mixer tap over. Space for washing machine and tumble dryer. Laminate flooring.

### **Bedroom One**

Double glazed window to front aspect. Built-in wardrobes, laminate flooring, radiator.

### **Bedroom Two**

Double glazed window to front aspect. Built-in wardrobes, laminate flooring, radiator.

### **Bathroom**

Double glazed window to side aspect. Panel enclosed bath with shower over, low level WC and wash hand basin set in vanity unit with hidden cistern. Laminate flooring, tiled walls, heated towel rail.

### **Outside**

#### **Front Garden**

Driveways providing off road parking and leading to garage. Side pedestrian access, mature shrubs.

#### **Garage**

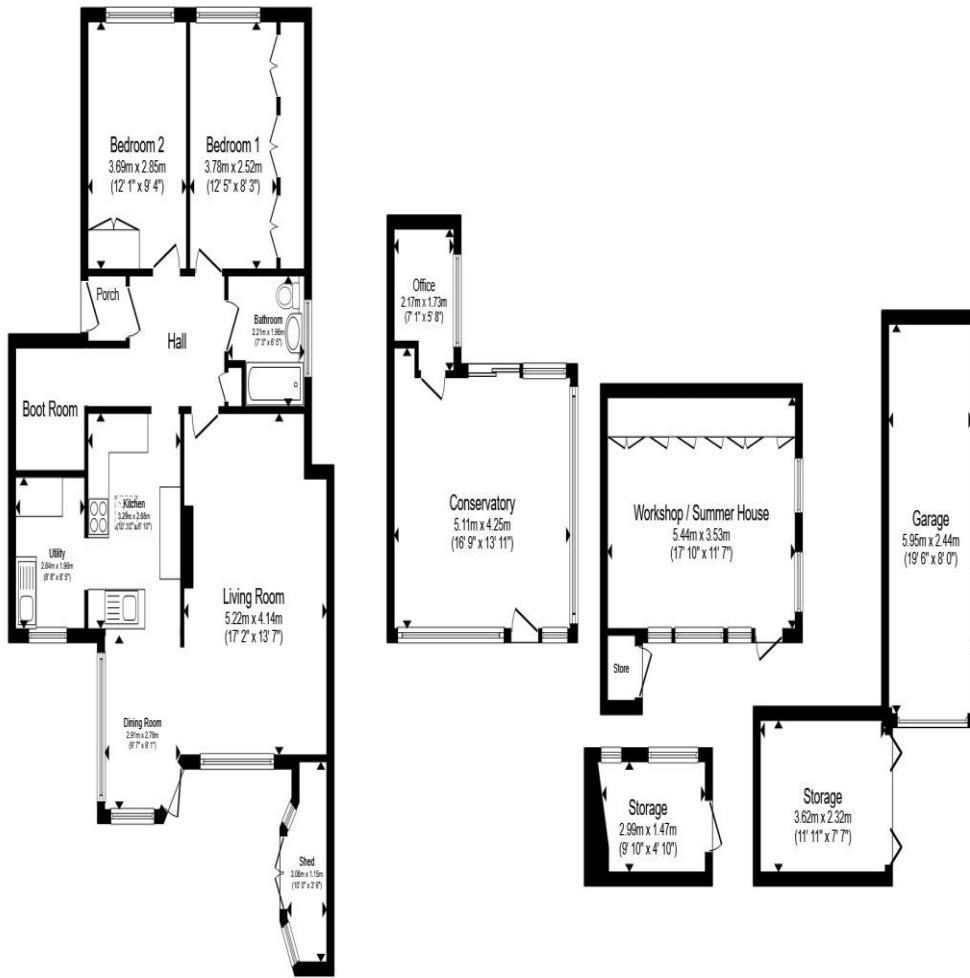
Barn doors.

#### **Rear Garden**

Tiered garden with lovely patio area, pergola and laid to lawn. Several outbuildings.

#### **Workshop/Summer House**

Double glazed windows and door. Carpet flooring, air conditioning. Cupboards with work surface over.



**Ground Floor**

**Outbuilding**

Total floor area 157.9 m<sup>2</sup> (1,700 sq.ft.) approx

This floor plan is for illustrative purposes only. It is not drawn to scale. Any measurements, floor areas (including any total floor area), openings and orientation are approximate. No details are guaranteed, they cannot be relied upon for any purpose and they do not form part of any agreement. No liability is taken for any error, omission or misstatement. A party must rely upon its own inspection(s). Powered by [www.propertybox.io](http://www.propertybox.io)



**welcome to**  
**Francis Road,**  
**Horndean Waterlooville**

- Lovely Two Bed Bungalow
- Over 1600 Sq Feet Including Outbuildings
- Stylish Open Plan Kitchen/Diner
- Utility Room & Boot Room
- Garage & Off Road Parking

Tenure: Freehold EPC Rating: D  
Council Tax Band: D

**£465,000**



**view this property online** [fox-and-sons.co.uk/Property/WLV109561](https://fox-and-sons.co.uk/Property/WLV109561)



Property Ref:  
WLV109561 - 0003

1. MONEY LAUNDERING REGULATIONS Intending purchasers will be asked to produce identification documentation at a later stage and we would ask for your co-operation in order that there is no delay in agreeing the sale. 2. These particulars do not constitute part or all of an offer or contract. 3. The measurements indicated are supplied for guidance only and as such must be considered incorrect. Potential buyers are advised to recheck measurements before committing to any expense. 4. We have not tested any apparatus, equipment, fixtures or services and it is in the buyers interest to check the working condition of any appliances. 5. Where an EPC, or a Home Report (Scotland only) is held for this property, it is available for inspection at the branch by appointment. If you require a printed version of a Home Report, you will need to pay a reasonable production charge reflecting printing and other costs. 6. We are not able to offer an opinion either written or verbal on the content of these reports and this must be obtained from your legal representative. 7. Whilst we take care in preparing these reports, a buyer should ensure that his/her legal representative confirms as soon as possible all matters relating to title including the extent and boundaries of the property and other important matters before exchange of contracts.

Fox & Sons is a trading name of Sequence (UK) Limited which is registered in England and Wales under company number 4268443, Registered Office is Cumbria House, 16-20 Hockliffe Street, Leighton Buzzard, Bedfordshire, LU7 1GN. VAT Registration Number is 500 2481 05.



**023 9226 2447**



[Waterlooville@fox-and-sons.co.uk](mailto:Waterlooville@fox-and-sons.co.uk)



81B London Road, WATERLOOVILLE,  
Hampshire, PO7 7ES



**[fox-and-sons.co.uk](https://fox-and-sons.co.uk)**