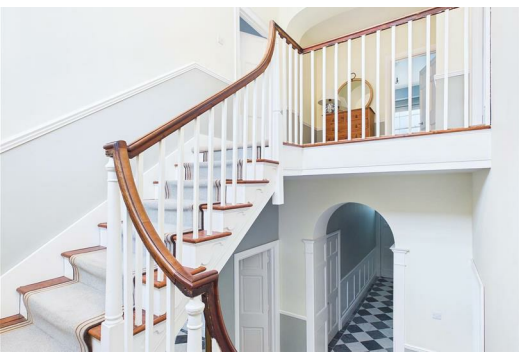




Olive

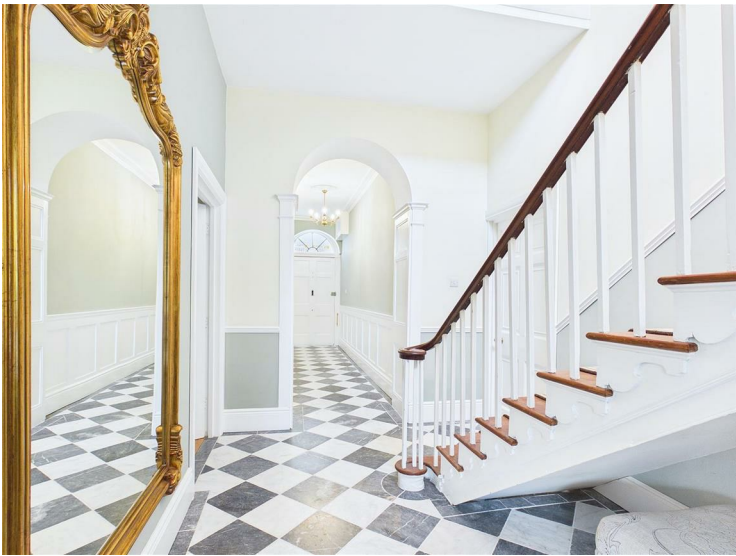
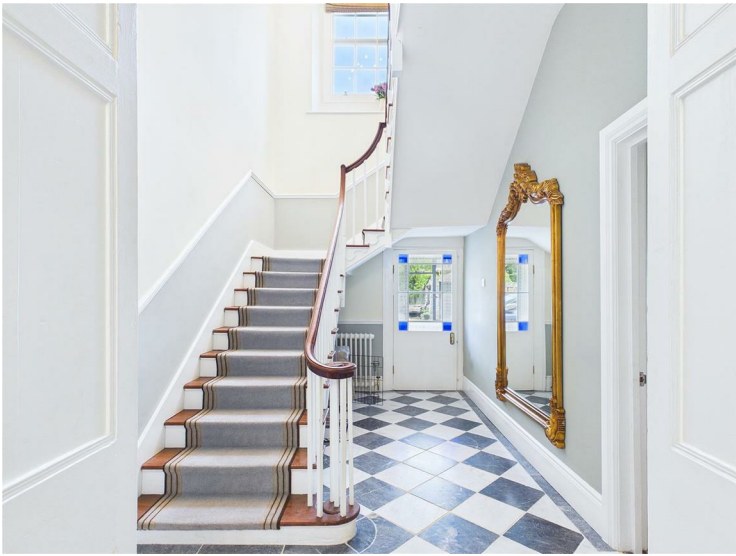
ESTATE AGENTS

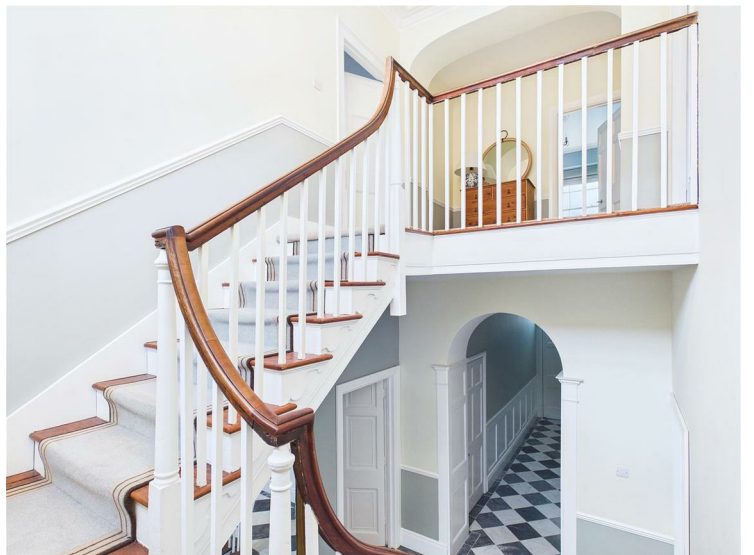
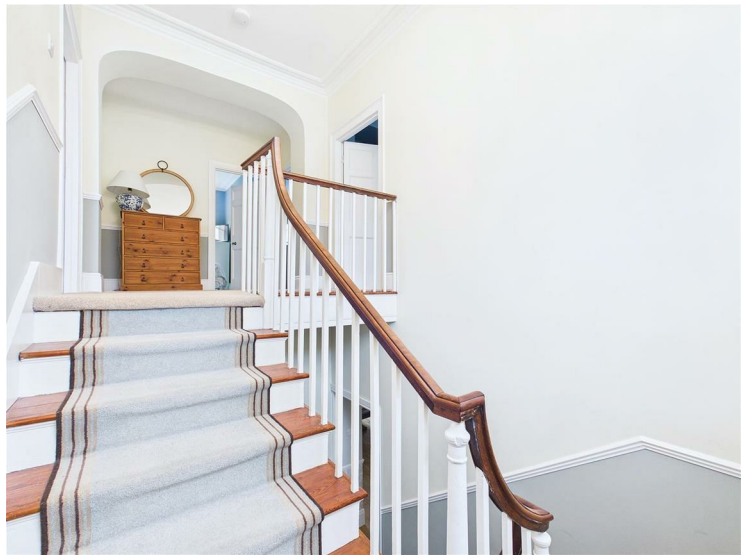


Sungate Church Street, Cheddar, BS27 3RA £785,000

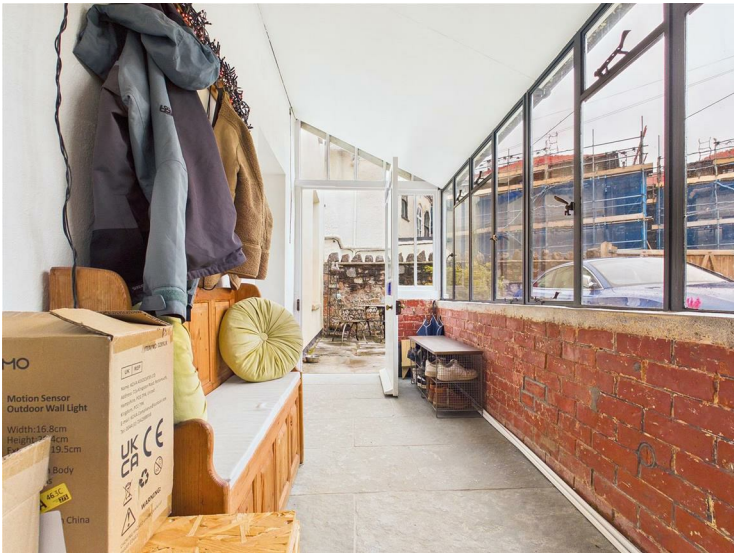
*** A FINE EXAMPLE OF A STUNNING DETACHED PERIOD PROPERTY *** AN ABUNDANCE OF FEATURES CHARACTERISED BY LARGE SLIDING SASH WINDOWS FLOODING THE PROPERTY WITH LIGHT, VICTORIAN STYLE RADIATORS, HIGH CEILINGS, ORIGINAL FIREPLACE, ORIGINAL WOODEN SHUTTERS, WIDE WOODEN DOORS, CORNICE, COVING & DADO RAILS, A BEAUTIFUL ORIGINAL WINDING STAIRCASE AND STAINED GLASS WINDOWS *** LOCATED RIGHT IN THE VERY HEART OF POPULAR CHEDDAR *** COMPLETELY RENOVATED THROUGHOUT TO AN EXCEPTIONAL STANDARD BY THE CURRENT OWNERS *** STUNNING ORIGINAL ENTRANCE PORCH *** LARGE ENTRANCE HALLWAY FEATURING A SHOW STOPPER ORIGINAL WINDING STAIRCASE *** FOUR DOUBLE BEDROOMS *** JACK AND JILL SHOWER ROOM *** LARGE FAMILY BATHROOM *** LARGE DUAL ASPECT KITCHEN/DINING/FAMILY ROOM *** UTILITY *** OFFICE *** REAR SUN/BOOT ROOM *** DOWNSTAIRS WC *** FREEHOLD *** COUNCIL TAX BAND E *** EPC D57 *** FREEHOLD ***

Positioned in a prominent and sought after location in the popular, thriving village of Cheddar. Today, this impressive Grade II listed property has been extensively and lovingly refurbished to create a beautiful four-bedroom family home. Many features remain, including a superb staircase, good ceiling heights, sliding sash windows with original wooden shutters and period fireplaces. Huge additional selling features, aside from those already mentioned, is the entrance hallway upon entering the property and off the street parking. Cheddar itself is a vibrant community with so much to offer. There are several bars, restaurants, coffee shops, supermarkets, library, deli's to name but a few. You are also a short walking distance to the Kings of Wessex Schools.













Floor 0



Floor 1



Approximate total area⁽¹⁾
1998 ft²
Reduced headroom
29 ft²

(1) Excluding balconies and terraces

Reduced headroom
..... Below 5 ft

Calculations reference the RICS IPMS 3C standard. Measurements are approximate and not to scale. This floor plan is intended for illustration only.

GIRAFFE360

