



43b South Street, Hythe, SO45 6EA

In Excess of £260,000



ANTHONY JAMES
PROPERTIES



43b South Street

Hythe, Southampton

This brand new, high-specification end-terrace home forms part of a unique and select development of just four terrace houses, ideally situated within walking distance of both Hythe Village and the picturesque Waterfront. The property offers a thoughtfully designed layout, featuring an inviting entrance hall, a convenient ground floor WC, a stylishly fitted kitchen, and a living room opening onto the garden. Upstairs, there are two bedrooms and a contemporary bathroom, all finished to an excellent standard. The home benefits from an energy efficient combi boiler, as well as UPVC double glazing throughout, ensuring comfort and lower energy costs. Off-road parking and car charging points are included for added convenience. This is a rare opportunity to secure a quality new home in a sought-after location, and with only four properties in the development, we expect significant interest. We strongly encourage early viewing to avoid disappointment.

Council Tax band: A

Tenure: Freehold

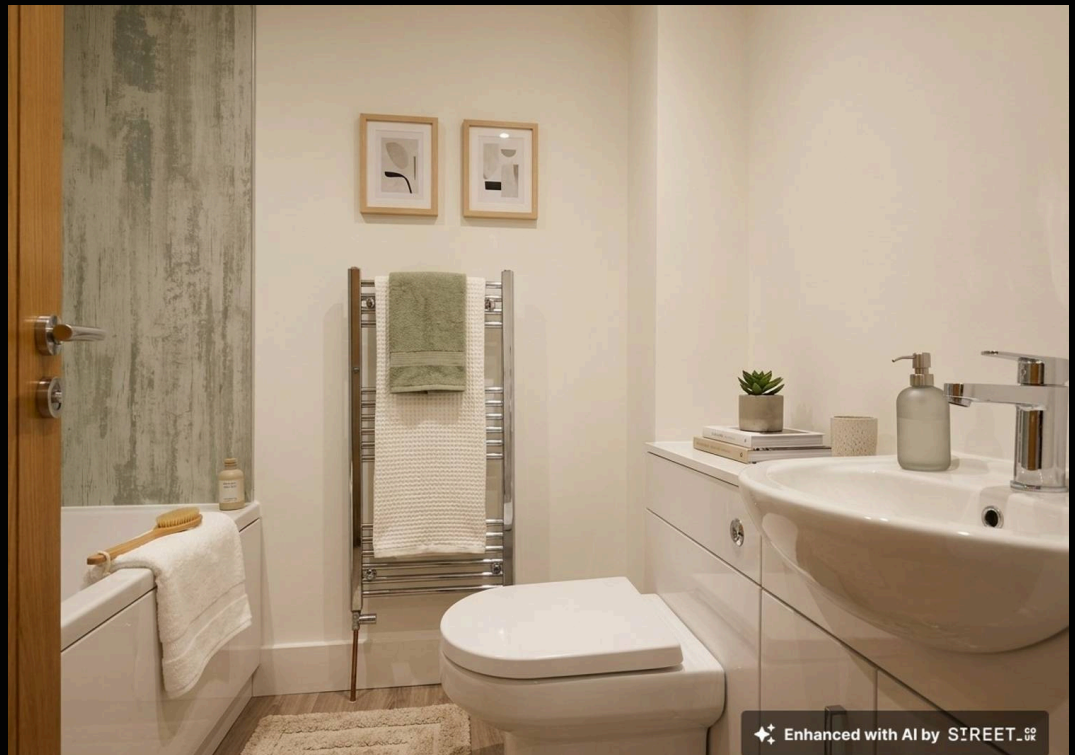


1 Southward House
Dibden Purlieu SO45 4PT

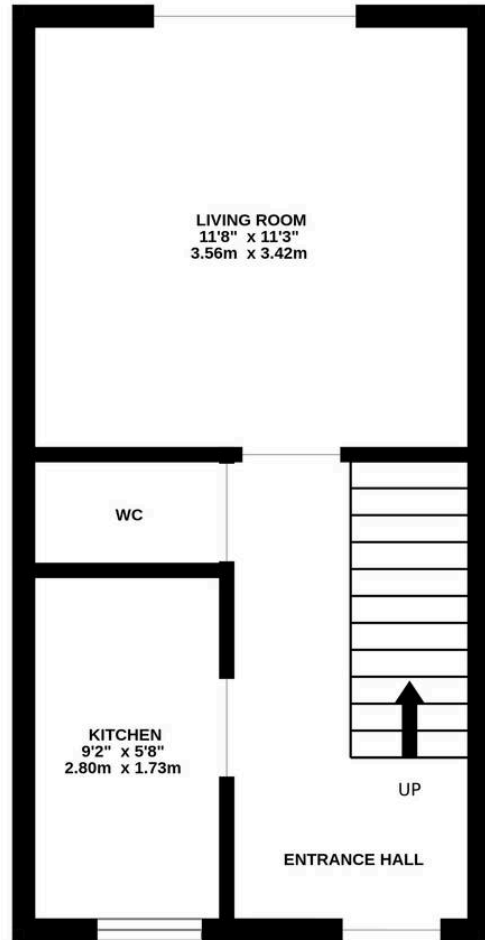


T: 02380 844405

info@anthonyjamesproperties.co.uk



GROUND FLOOR



1ST FLOOR

