

Guide Price £165,000



29 Heyridge Meadow, Cullompton, Devon, EX15 1FD

- Dual aspect sitting room
- 2 bedrooms with fitted wardrobes
- Electric heating & double glazing
- Nearby bus services to Exeter
- No onward chain, ready to occupy
- Fitted kitchen with cooker included
- Modern family bathroom
- Generous garage parking beneath the coachhouse
- Walking distance to town, schools & amenities

Sales, Lettings, Mortgages:

Bampton 01398 332006 | Cullompton 01884 32100 | Tiverton 01884 253500

Watch the Seddons Video Tour

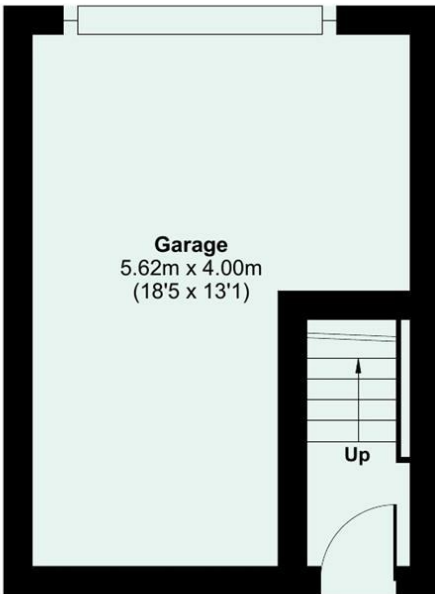
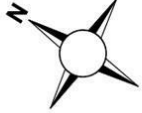
A modern, two bedroom coach house with garage parking and offering spacious accommodation with plenty of storage. Brand new carpets and freshly decorated throughout. No onward chain.

Approximate Area = 619 sq ft / 57.5 sq m

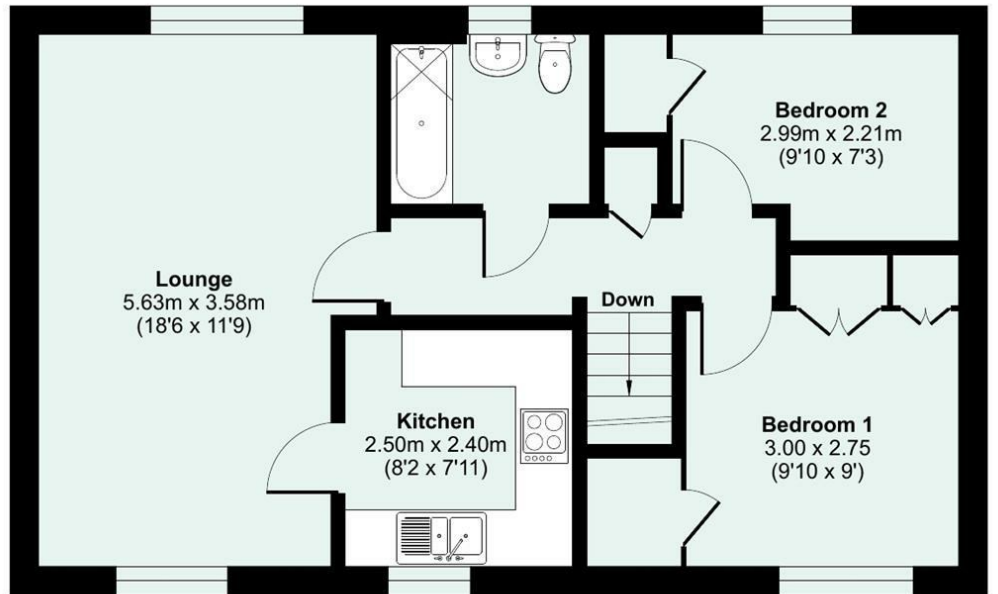
Garage = 198 sq ft / 18.3 sq m

Total = 817 sq ft / 75.8 sq m

For identification only - Not to scale



GROUND FLOOR



FIRST FLOOR

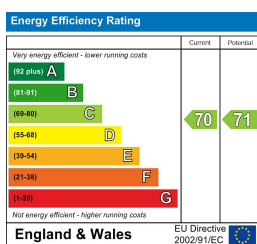
Floor plan produced in accordance with RICS Property Measurement 2nd Edition, Incorporating International Property Measurement Standards (IPMS2 Residential). © ntcocom 2026. Produced for Seddon Estate Agents LLP. REF: 1405121



Council Tax Band

B

EPC Rating



Viewings

Viewings by arrangement only. Please call 01884 32100 to make an appointment.