



La Maison De La Croix Catelain

Le Boulivot De Bas



La Maison De La Croix Catelain, Le Boulivot De Bas, Grouville, JE3 9UH

Located on a peaceful country lane in the highly desirable parish of Grouville, this charming granite property offers flexible and spacious accommodation, perfect for a large family, multi-generational living, or, subject to planning, conversion into two separate dwellings.

The ground floor features a welcoming sitting room with a fireplace, a well-appointed kitchen, a separate dining room, and a convenient utility room. Upstairs, you'll find three generous double bedrooms, including a primary with en-suite and study/dressing room, a family bathroom, and an additional WC with wash hand basin.

A stand out feature is the large reception area with its own kitchen space—ideal for second generation, creating additional bedrooms or transforming into a self-contained unit (subject to planning approval). There's also a substantial loft space offering conversion potential.

Outside, the property boasts a beautiful front garden, large garage and workshop, two front parking spaces, and additional courtyard parking to the rear.



3



2



3

Parish: Grouville

Qualification: Qualified

Tenure: Freehold

Price £845,000



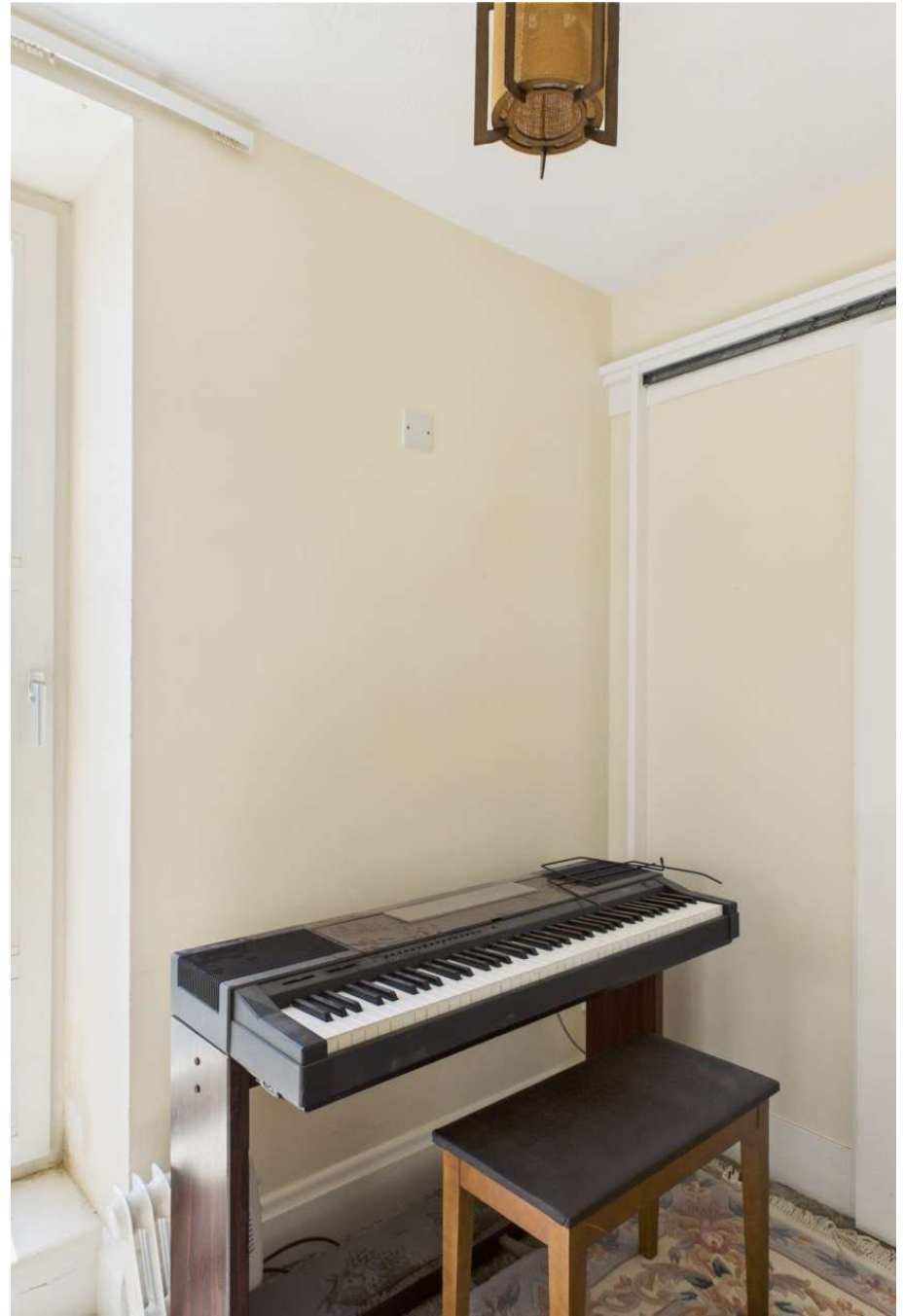
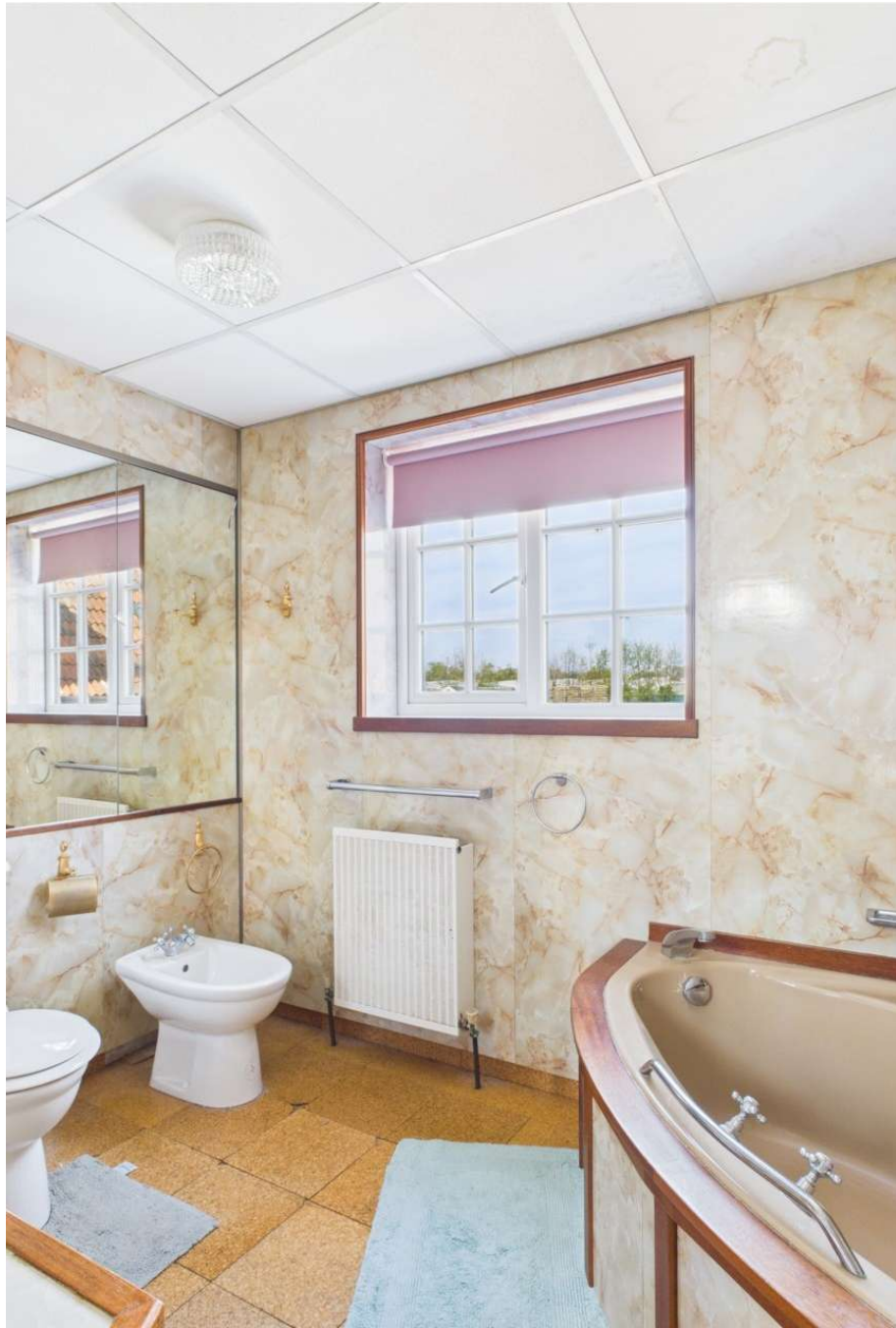
- Flexible layout
- Three bedrooms, two bathrooms
- Two receptions and kitchen downstairs
- Plus spacious reception area with secondary kitchen
- Ample garaging, workshop & multiple parking
- Peaceful yet convenient Grouville location













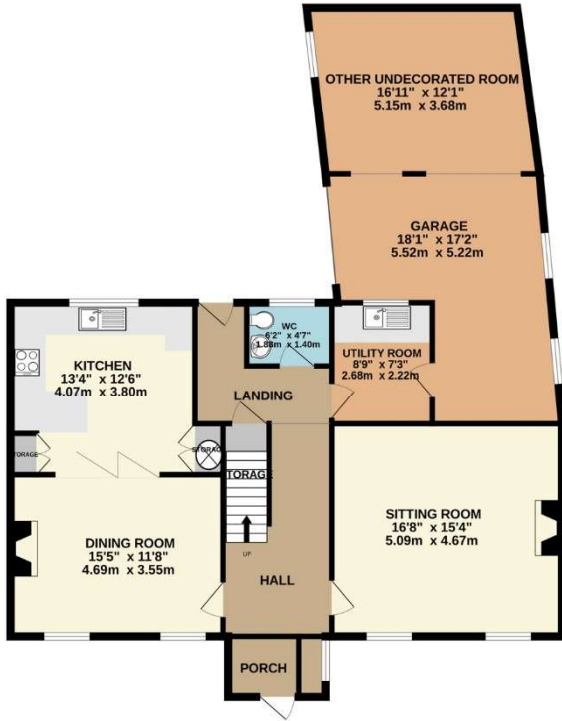








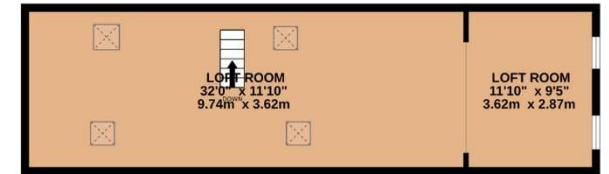
GROUND FLOOR
1309 sq.ft. (121.6 sq.m.) approx.



1ST FLOOR
1267 sq.ft. (117.7 sq.m.) approx.



2ND FLOOR
491 sq.ft. (45.6 sq.m.) approx.



TOTAL FLOOR AREA : 3067 sq.ft. (284.9 sq.m.) approx.

Whilst every attempt has been made to ensure the accuracy of the floorplan contained here, measurements of doors, windows, rooms and any other items are approximate and no responsibility is taken for any error, omission or mis-statement. This plan is for illustrative purposes only and should be used as such by any prospective purchaser. The services, systems and appliances shown have not been tested and no guarantee as to their operability or efficiency can be given.
Made with Metropix ©2025

This plan is for layout guidance only. Not drawn to scale unless stated. Windows and door openings are approximate. Whilst every care is taken in the preparation of this plan, please check all dimensions, shapes and compass bearings before making any decisions reliant upon them.

Services

Mains drains

Mains water

Oil fired central heating

+441534 877977

Knight Frank Jersey

37-39 Halkett Place, St. Helier, Jersey JE2 4WG

knightfrank.je

Your partners in property

1. Particulars: These particulars are not an offer or contract, nor part of one. You should not rely on statements given by Knight Frank Jersey in the particulars, by word of mouth or in writing ("information") as being factually accurate about the property, its condition or its value. Neither Knight Frank Jersey nor any joint agent has any authority to make any representations about the property, and accordingly any information given is entirely without responsibility on the part of Knight Frank Jersey. 2. Material Information: Please note that the material information is provided to Knight Frank Jersey by third parties and is provided here as a guide only. While Knight Frank Jersey has taken steps to verify this information, we advise you to confirm the details of any such material information prior to any offer being submitted. If we are informed of changes to this information by the seller or another third party, we will use reasonable endeavours to update this as soon as practical. 3. Photos, Videos etc: The photographs, property videos and virtual viewings etc. show only certain parts of the property as they appeared at the time they were taken. Areas, measurements and distances given are approximate only. 4. Regulations etc: Any reference to alterations to, or use of, any part of the property does not mean that any necessary planning, building regulations or other consent has been obtained. A buyer must find out by inspection or in other ways that these matters have been properly dealt with and that all information is correct. 5. Fixtures and fittings: A list of the fitted carpets, curtains, light fittings and other items fixed to the property which are included in the sale (or may be available by separate negotiation) will be provided by the Seller's Lawyer. Particulars dated 05/09/2025. All information is correct at the time of going to print.

