



## Palladian Gardens, W4

£807 Per calendar month

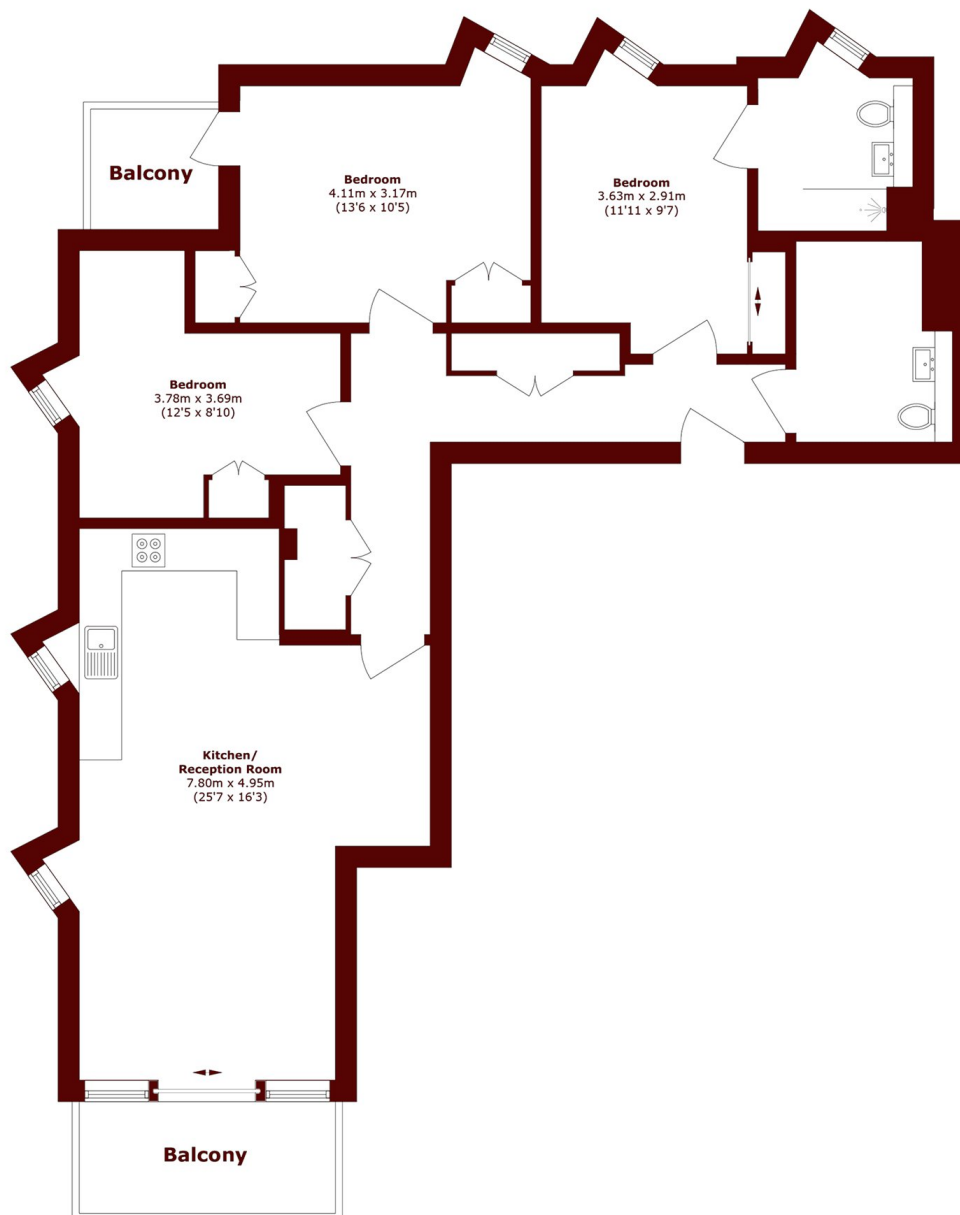
Situated within the prestigious, gated development of Palladian Gardens, this beautifully presented apartment offers three large double bedrooms, two modern bathrooms, and two private balconies.

Palladian Gardens enjoys an enviable location in the heart of W4, just a short stroll from the River Thames and the historic Chiswick House and its beautiful grounds. Residents benefit from effortless access to Chiswick High Road, offering an excellent selection of cafés, boutiques, restaurants, and everyday amenities. For convenient travel across London, Turnham Green Terrace Station is only moments away, connecting you quickly to the District and Piccadilly Lines.

### Features

- Three double bedrooms
- Two Bathrooms
- Two Balconies
- Underground Parking
- Communal Gardens
- Concierge Service
- Gated Development

# Palladian Gardens, London, W4



Total area (approx.): 97.8 sq. m (1052.7 sq. ft)

Balcony area (approx.): 8.7 sq. m (93.6 sq. ft)