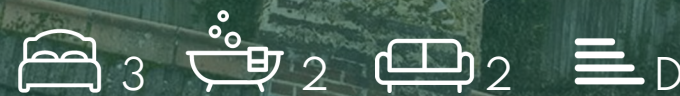




arthur grace  
RESIDENTIAL

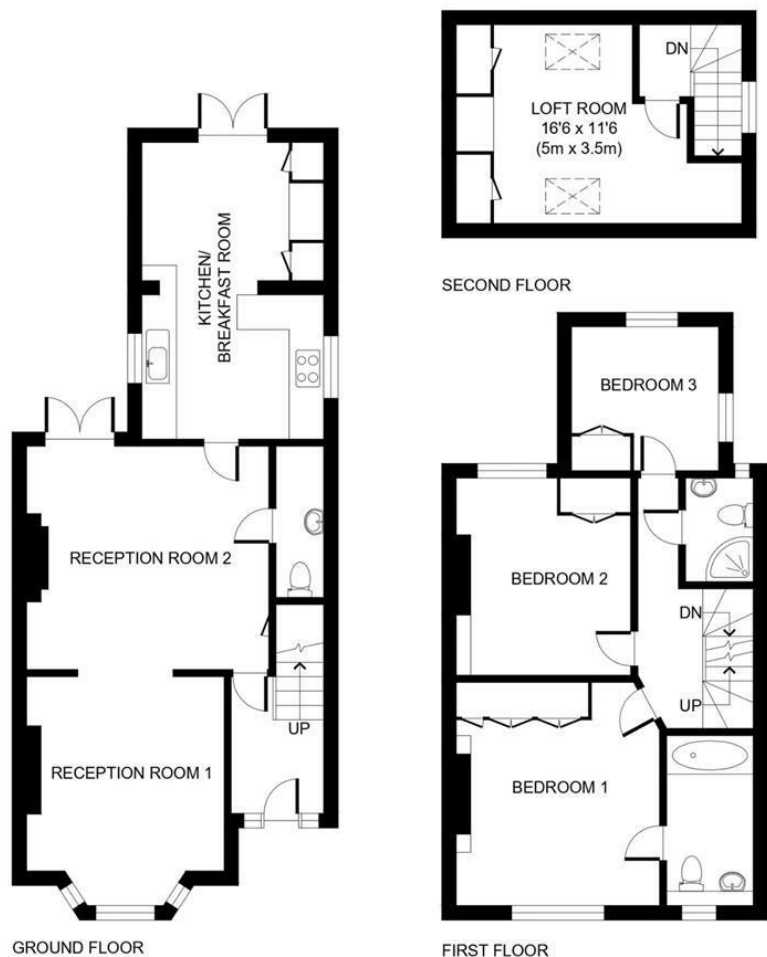


Orchard Grove, Gerrards Cross, SL9 9ET  
Offers In Excess Of £685,000





## Floor Plan



Disclaimer. Orchard Grove, 120 m sq / 1288 ft sq. Whilst every attempt has been made to ensure the accuracy of the floor plan contained here, measurements of doors, windows, rooms and any other item are approximate and no responsibility is taken for any error, omission, or misstatement.

**arthur grace**  
RESIDENTIAL

## Accommodation

- \*\* Unexpectedly back to the market \*\*
- Family home only steps from 'The Common & High Street'
- 3 bedrooms + loft room
- 2.5 bathrooms (including downstairs WC)
- 2 reception rooms + eat in kitchen
- Street parking & walled garden
- Surrounded by sought-after schooling (private & state)
- 1288 sq ft
- Council Tax. Band E
- EPC D



These particulars, whilst believed to be accurate are set out as a general outline only for guidance and do not constitute any part of an offer or contract. Intending purchasers should not rely on them as statements of representation of fact, but must satisfy themselves by inspection or otherwise as to their accuracy. No person in this firm's employment has the authority to make or give any representation or warranty in respect of the property.

16 Packhorse Road Gerrards Cross, Buckinghamshire, SL9 7DA  
Tel: 01753 628700 Email: [enquiries@arthurgraceresidential.com](mailto:enquiries@arthurgraceresidential.com) <https://www.arthurgraceresidential.com>