



Yew Tree Close, offers over £220,000

- Three spacious bedrooms
- Loft room
- Near Waun-Gron Park station
- Nearby schools for all ages
- Quiet residential neighbourhood
- Ideal for families or commuters
- EPC Rating: E



 3  1  2



About the property

For sale is this neutrally decorated three-bedroom terraced property with added loft room situated on Yew Tree Close, area of Caerdydd. The home comprises two reception rooms, providing distinct areas for both relaxation and in entertainment, as well as the kitchen. The bathroom serves the household, contributing to practical family living.

Located within the residential neighbourhood of Caerdydd, this property benefits from proximity to a range of local amenities. The area is served by convenient transport options—Waun-Gron Park railway station is the nearest and offers direct routes to Cardiff Central. Bus services from nearby locations provide straightforward connections into the city centre and surrounding districts. Families will find several schools in the vicinity, supporting education for various age groups. Outdoor spaces such as Victoria Park are within reach, offering opportunities for leisure, sports, and community events. The popular Cowbridge Road East is a short distance away, featuring a variety of shops, cafés, and essential services, ensuring daily needs are easily met. This property falls within Council Tax Band C and holds an EPC rating of E. It presents straightforward, functional accommodation suitable for a range of buyers seeking easy access to local facilities and transport links in Cardiff's CF5 area. Viewings are recommended for those looking to purchase a well-situated terraced home in this part of the city.



Accommodation

Lounge

Dining Room

Kitchen

Bedroom One

Bedroom Two

Bedroom Three

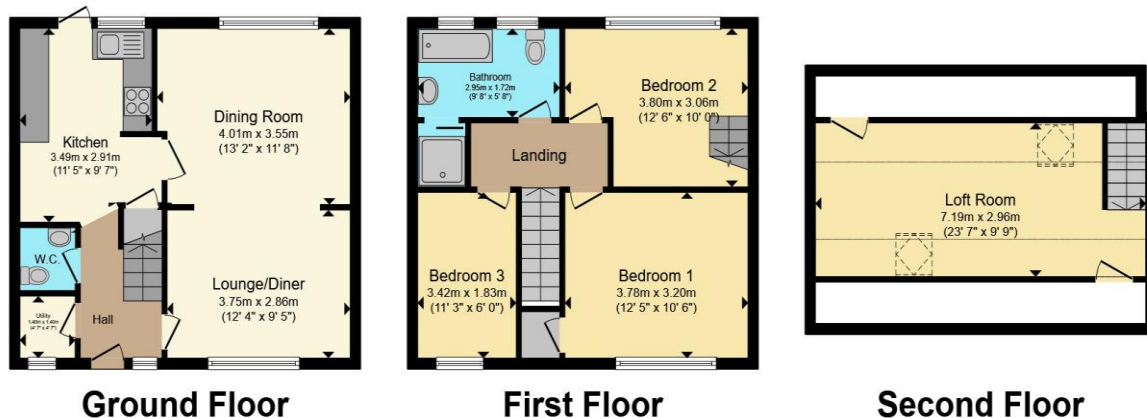
Loft Room

Bathroom

02920 397077

victoriapark@peteralan.co.uk

Floorplan



Total floor area 108.9 m² (1,172 sq.ft.) approx

This floor plan is for illustrative purposes only. It is not drawn to scale. Any measurements, floor areas (including any total floor area), openings and orientation are approximate. No details are guaranteed, they cannot be relied upon for any purpose and they do not form part of any agreement. No liability is taken for any error, omission or misstatement. A party must rely upon its own inspection(s). Powered by www.propertybox.io



Important Information

Note while we endeavour to make our sales details accurate and reliable, if there is any point which is of particular interest to you, please contact the office and we will be pleased to confirm the position for you. We have not personally tested any apparatus, equipment, fixtures, fittings or services and cannot verify they are in working order or fit for their purposes. Nothing in these particulars is intended to indicate that carpets or curtains, furnishings or fittings, electrical goods (whether wired or not). Gas fires or light fittings or any other fixtures not expressly included form part of the property offered for sale. This computer generated Floorplan, if applicable, is intended as a general guide to the layout and design of the property. It is not to scale and should not be relied upon for dimensions. Tenure: We cannot confirm the tenure of the property as we have not had access to the legal documents. The buyer is advised to obtain verification from their solicitor or surveyor.

Peter Alan Limited is registered in England and Wales under company number 2073153, Registered Office is Cumbria House, 16-20 Hockliffe Street, Leighton Buzzard, Bedfordshire, LU7 1GN. VAT Registration Number is 500 2481 05. For activities relating to regulated mortgages and non-investment insurance contracts, Peter Alan Limited is an appointed representative of Connells Limited which is authorised and regulated by the Financial Conduct Authority. Connells Limited's Financial Services Register number is 302221. Most buy-to-let

