

# Ferris&Co



**£1250 pcm**

**Holding deposit equivalent to 1 week's rent on application**



**9 Waterlow Road**  
Maidstone , ME14 2TR

TEL: 01622 737800  
Email:  
[lettings@ferrisandco.net](mailto:lettings@ferrisandco.net)  
[www.ferrisandco.net](http://www.ferrisandco.net)

Westwood House  
Thurnham Lane  
Maidstone, Kent  
ME14 4QZ

DESCRIPTION

A most attractive Victorian two bed terrace, built in dressed ragstone with a North facing rear garden. The accommodation is arranged over two floors, extending to roughly 620 square feet, not including the twin chamber cellar which is also another great feature. Conveniently placed on the favoured Northern outskirts of the town within walking distance of the centre and mainline railway station connection to London.

LOUNGE 10' 1" x 12' 3" (3.07m x 3.73m)

Light, bright and airy lounge. Neutral colours. North facing window looking out to Waterlow Road. Radiator.

KITCHEN 12' 3" x 10' 3" (3.73m x 3.12m)

Large kitchen/breakfast room. White kitchen units with stainless steel fittings. Granite effect work surfaces. Tiled splash-back. 4 burner hob with extractor fan. Boiler in wall cupboard. Door to cellar. Vinyl flooring. South facing window looking out to enclosed rear garden. Radiator.

UTILITY ROOM 6' 6" x 6' 9" (1.98m x 2.06m)

White units with stainless steel fittings. Granite effect surfaces. Back door to garden with frosted glass. Window. Tiled flooring.

BATHROOM 6' 6" x 5' 5" (1.98m x 1.65m)

Bath with thermostatic shower tap. Low level W.C. Hand wash basin. Frosted glass window. Tiled flooring.

BEDROOM 1 12' 3" x 10' 0" (3.73m x 3.05m)

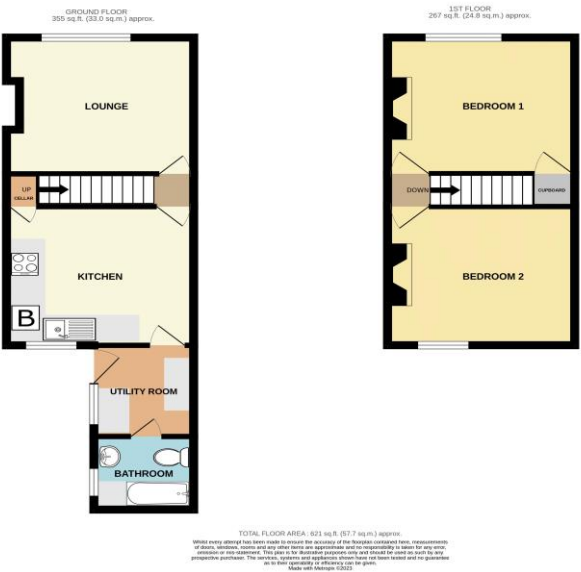
Spacious, bright bedroom. Inbuilt wardrobe. Cosmetic fireplace. Window overlooking the front of the property.

BEDROOM 2 12' 3" x 10' 2" (3.73m x 3.10m)

Spacious bright bedroom. Neutral colours. Radiator. Window overlooking rear enclosed garden.



DIRECTIONS





# Energy Efficiency Rating

	Current	Potential
<i>Very energy efficient - lower running costs</i>		
(92-100) <b>A</b>		
(81-91) <b>B</b>		89
(69-80) <b>C</b>		
(55-68) <b>D</b>	67	
(39-54) <b>E</b>		
(21-38) <b>F</b>		
(1-20) <b>G</b>		
<i>Not energy efficient - higher running costs</i>		

