

Frank Harris & Co.



Boswell House, WC1N

£525,000

Introducing to the market this spacious, smartly presented one bedroom apartment located on the second floor within an attractive red brick mansion block in Bloomsbury. The property comprises a generous reception/dining space, a large double bedroom, separate kitchen and bathroom. This property offers great versatility, working well as a main home in the city, pied a terre, or an ideal investment.

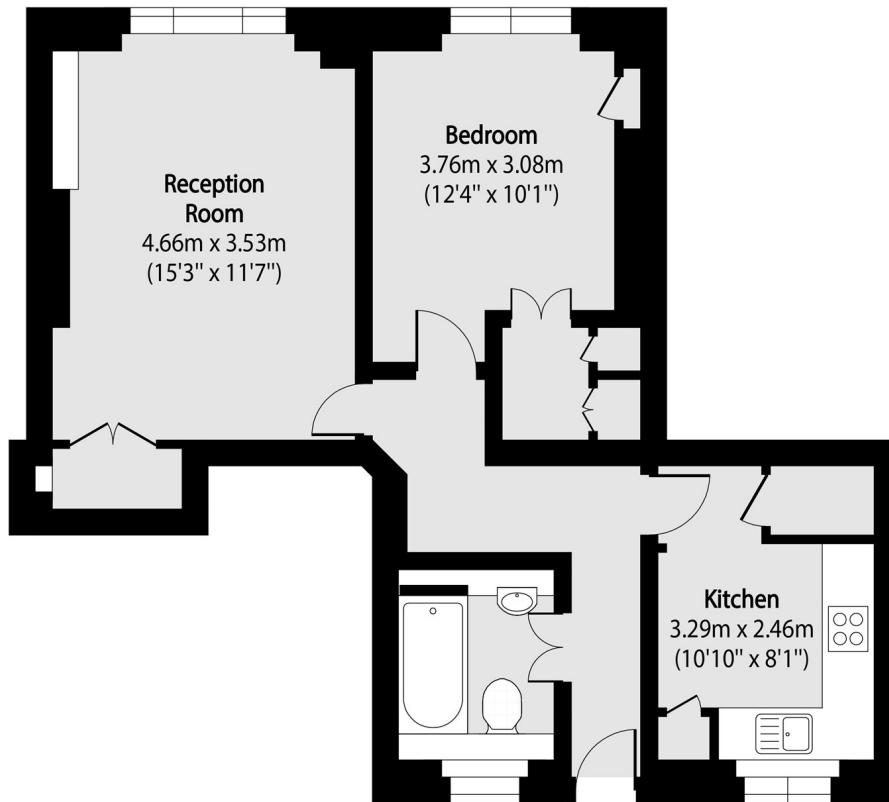


Boswell House is located within close proximity to both Holborn and Russell Square tube stations. Residents also benefit from excellent local amenities, with the fantastic array of local shops, restaurants, and cafés of the renowned Lamb's Conduit Street just a short stroll away.

- Spacious accommodation • Second floor • Red brick mansion block •
- Central location • Excellent transport links • Superb local amenities •



Frank Harris & Co.



Total area (approx): 52.09 sq m (561 sq. ft)

Frank Harris & Co. Bloomsbury and Kings Cross
81 Marchmont Street,
London, WC1N 1AL
020 7405 4444
bloomsburysales@frankharris.co.uk

Energy Rating: D. We aim to make our particulars both accurate and reliable. However they are not guaranteed; nor do they form part of an offer or contract. If you require clarification on any points then please contact us, especially if you're traveling some distance to view. Please note that appliances and heating systems have not been tested and therefore no warranties can be given as to their good working order.

