



Holme Court, Matlock Street, Bakewell, DE45 1GQ

Holme Court, Matlock Street Bakewell, DE45 1GQ

Main Description

Perfectly positioned in the heart of Bakewell, on Matlock Street, this modern, purpose-built apartment offers a delightful living experience in the stunning Peak District. With a guide price ranging from £240,000 to £250,000, this property is chain-free and ready for its new owners.

Situated on the second floor, the apartment is easily accessible via a lift and includes an allocated parking space, a rare find in such a central location. The spacious open-plan dining and living area is perfect for both relaxation and entertaining, featuring a charming log effect fire and a tasteful mantelpiece that adds a touch of warmth to the space. The separate, fully fitted kitchen comes equipped with built-in appliances, making it a joy for any home cook.

The accommodation boasts two well-proportioned bedrooms. The master bedroom is particularly impressive, offering ample storage with fitted wardrobes and an en-suite bathroom that includes a bath as part of its three-piece suite. The second bedroom, while smaller, also provides additional storage, and there is a generous main shower room for guests.

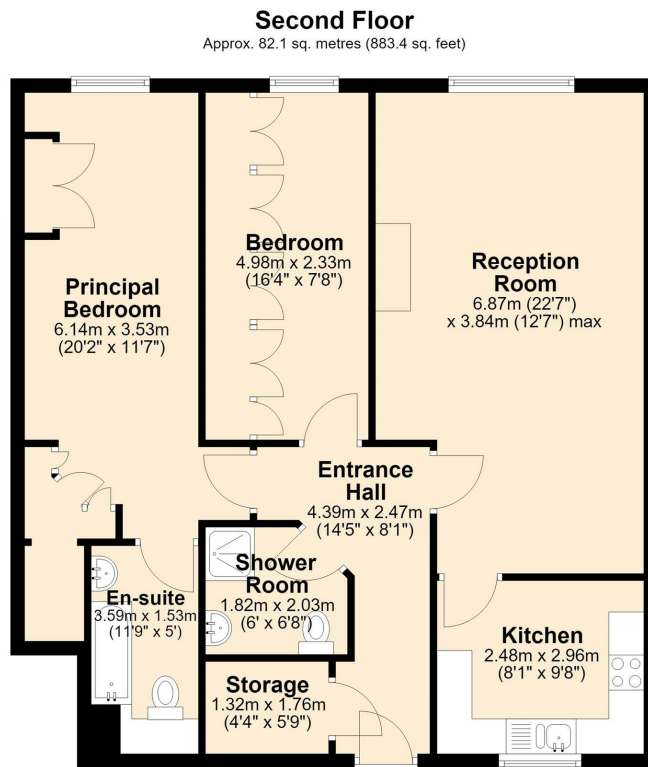
This apartment has been meticulously maintained and benefits from reasonable management costs, making it an attractive option for a variety of buyers. Its prime location ensures excellent road and bus links to the wider Peak District, South Yorkshire, and Derbyshire, as well as easy access to Bakewell's charming amenities.

Whether you are seeking your first home, looking to downsize, or in need of a weekend retreat in the Peaks, this property is an ideal choice. Do not miss the opportunity to view this lovely apartment; contact ELR today to arrange a visit.

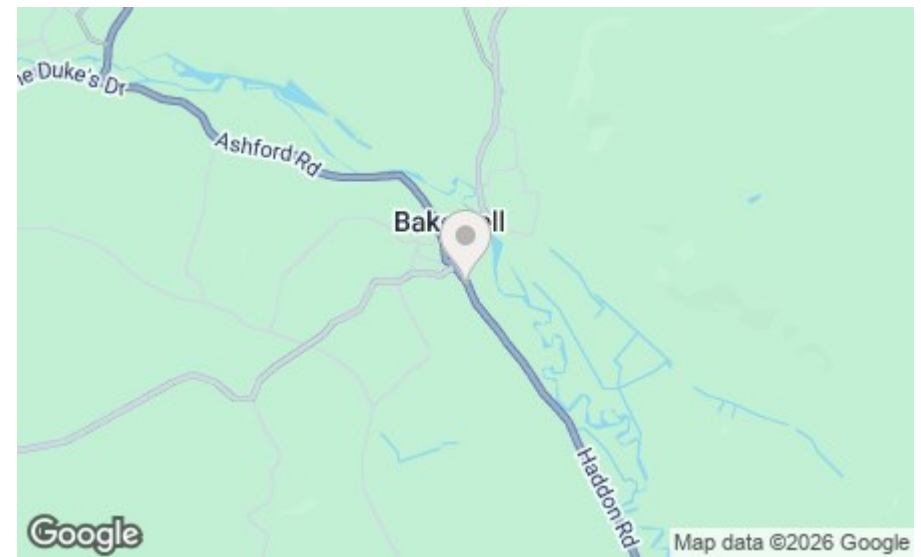
- Guide price £240,000-£250,000
- Chain-free modern apartment
- Two bedrooms, two bathrooms
- Open-plan living and dining
- Feature log effect fire
- Fully fitted kitchen, appliances
- Master bedroom with en-suite
- Lift access to second floor
- Allocated parking space
- Central Bakewell location







Total area: approx. 82.1 sq. metres (883.4 sq. feet)



Bakewell
3 Royal Oak Place
Matlock Street
Bakewell DE45 1HD
T: 01629 700699
E: bakewell@elr.co.uk

Banner Cross
888 Ecclesall Road
Banner Cross
Sheffield S11 8TP
T: 01142 683388
E: bannercross@elr.co.uk

Dore
33 Townhead Road
Sheffield
S17 3GD
T: 0114 2362420
E: dore@elr.co.uk

Hathersage
Main Road, Hathersage
Hope Valley
Derbyshire S32 1BB
T: 01433 651888
E: peakdistrict@elr.co.uk

Rotherham
149 Bawtry Road
Wickersley
Rotherham S66 2BW
T: 01709 917676
E: wickersley@elr.co.uk

**EADON
LOCKWOOD
& RIDDLE**
ESTD 1840