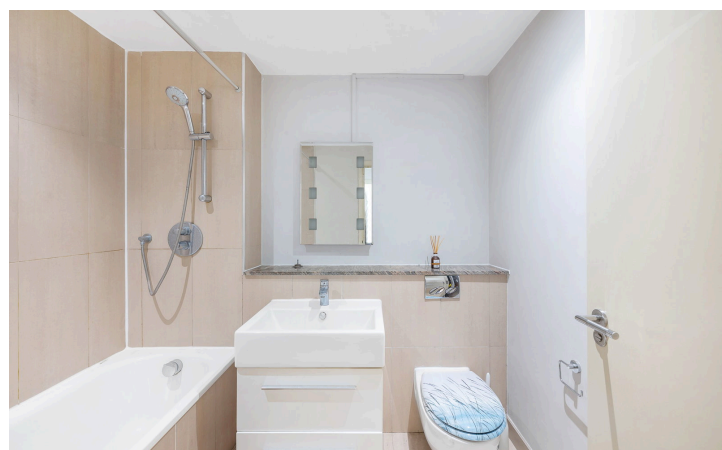
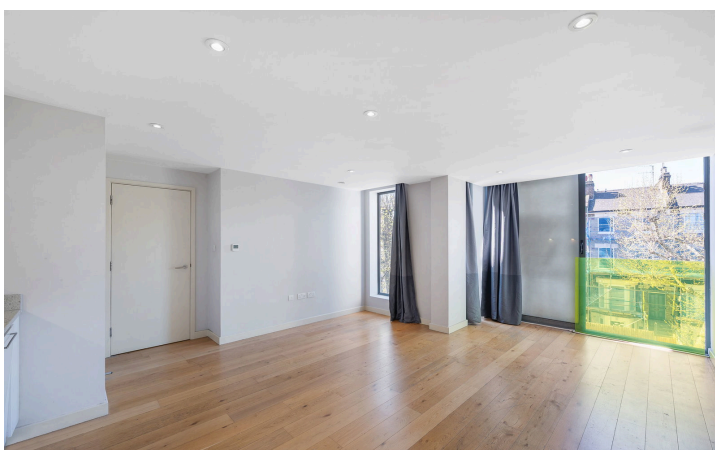


Nelson House, Westwick Gardens, W14

£2,100PCM

1 1 1



Tax Band: C Furnished: Not Specified

1 Double Bedroom

- Open Plan Kitchen/Reception

Floor to ceiling windows

- Contemporary Finish Throughout

2nd Floor

- Lots of Natural Light

560 sqft

- Moments from green parks

Walking distance to multiple transport lines

- Close to shops & restaurants of Westfield Shopping Centre

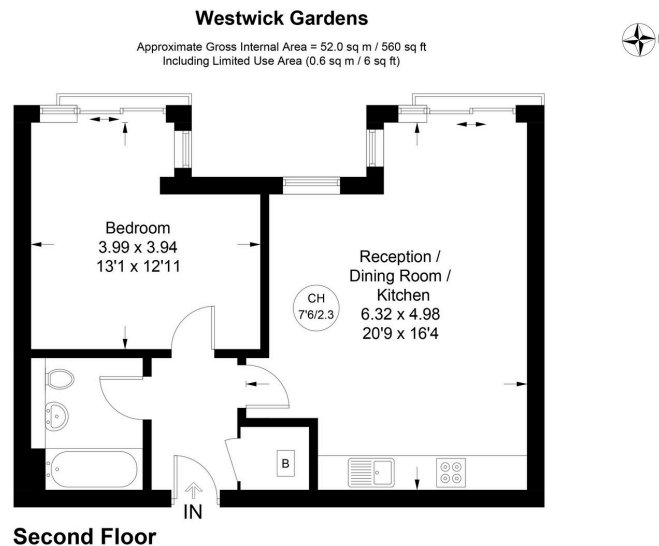


Illustration for identification purposes only, not for valuation purposes, measurements are approximate, not to scale. IPMS2

Right in the buzzing heart of Shepherd's Bush, this recently redecorated and super stylish 1-bedroom flat on the 2nd floor is the perfect mix of modern vibes and laid-back comfort. Flooded in natural light thanks to its West-facing windows, the open-plan living space is bright, roomy, and ideal for everything from chilling out to entertaining friends. Massive floor-to-ceiling windows and a slick Juliette balcony blur the lines between indoors and out—hello sunset views!