



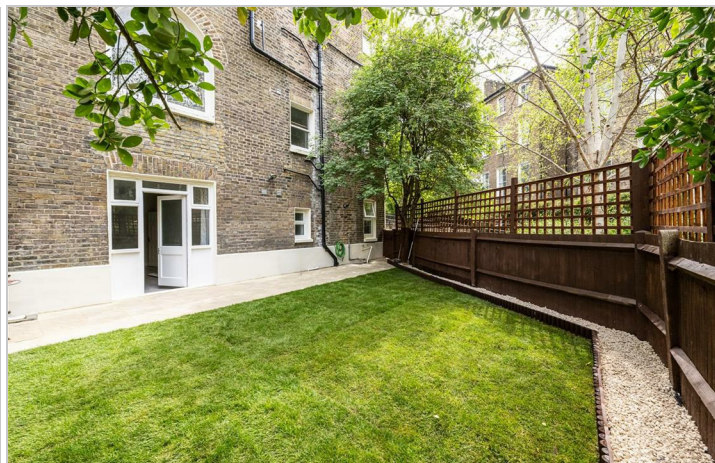
Oxford Road, Kilburn Park

£3,495 Per Month

 3  2  1  D

# Oxford Road, Kilburn Park

£3,495 Per Month



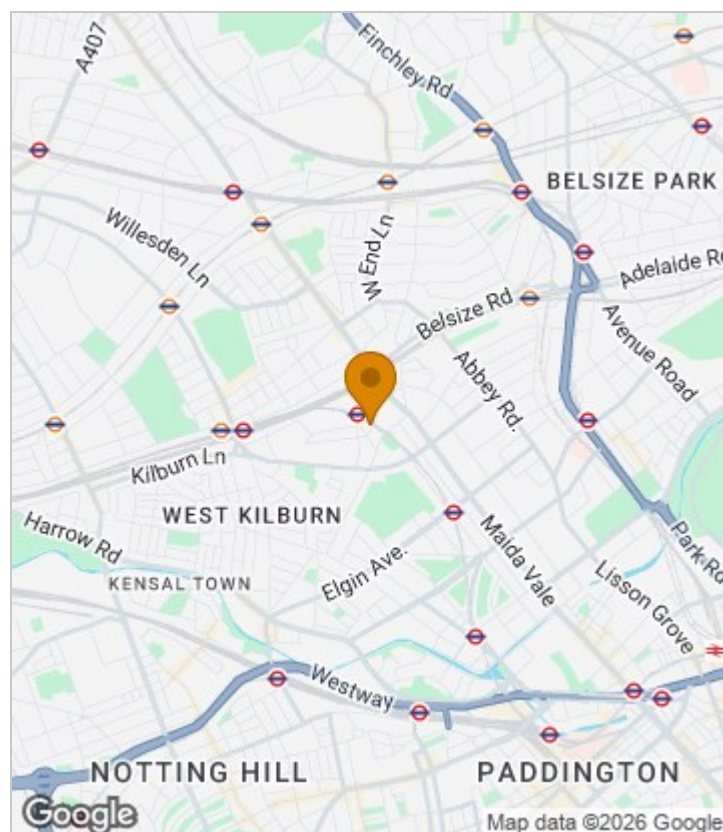
## Summary Description

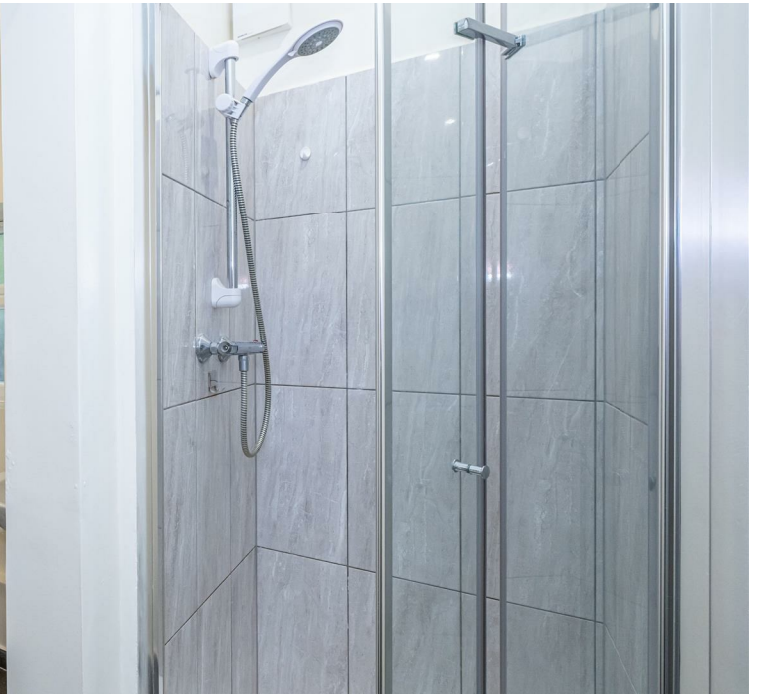
This beautiful and just renovated three bedroom two bathroom garden flat is available now! Featuring very good size bedrooms, a massive lounge overlooking stunning garden. Other bonuses are two very good size bathrooms, brand new kitchen, high ceiling. Wooden floor throughout, storage room for bicycles or just extra storage. Own entrance!

Only 3 minutes away from Kilburn park station road, 12 minutes to Maida Vale station, 15 minutes to Queens Park and famous Salusbury road.

One week's holding deposit required, 5 weeks damage deposit required, council tax band D

## Area Map





# Floor Plan



**Lower Ground Floor**



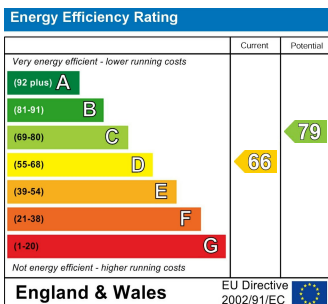
For Identification Purposes Only. Not To Scale. © www.totalvista.uk 2026

**Oxford Road, NW6**

Approx. Gross Internal Area  
110.83 Sq M - 1193 Sq Ft



## Energy Efficiency Graph



## Viewing

Please contact our Lettings QP Office on 0207 604 4040 if you wish to arrange a viewing appointment for this property or require further information.

For further information contact:

Lettings QP, 2a Brondesbury Road, London, NW6 6AS

Tel: 0207 604 4040 Email: [info@jorgensenturner.com](mailto:info@jorgensenturner.com) <https://www.jorgensenturner.com/>

## Disclaimer

These particulars, whilst believed to be accurate are set out as a general outline only for guidance and do not constitute any part of an offer or contract. Intending purchasers should not rely on them as statements of representation of fact, but must satisfy themselves by inspection or otherwise as to their accuracy. No person in this firm's employment has the authority to make or give any representation or warranty in respect of the property.