



Chiswick Lane, W4

£3,200 Per week

A three bedroom apartment arranged over the first and second floor of this period conversion offering flexible accommodation with a large reception and a separate kitchen.

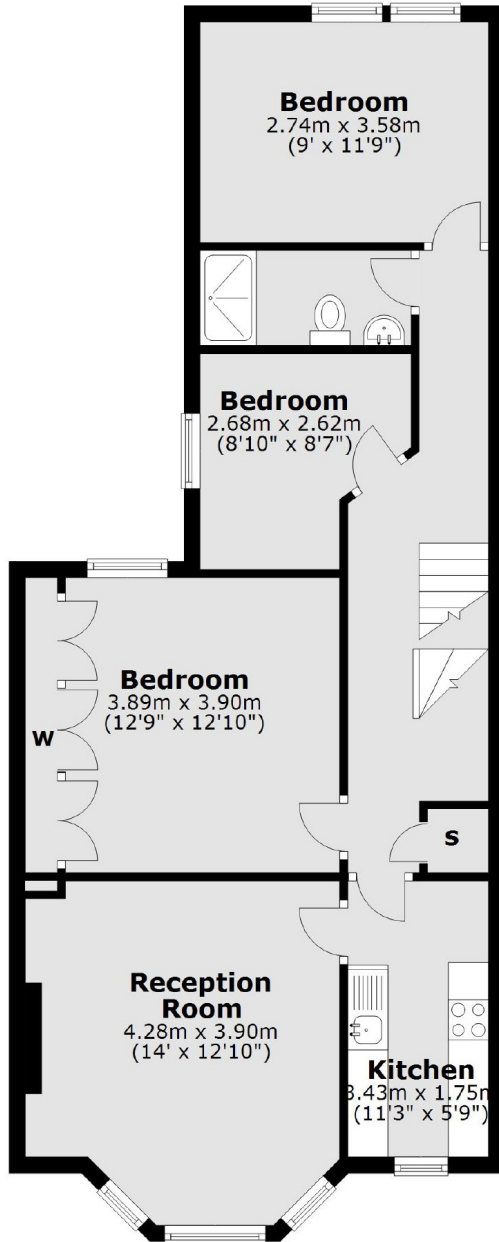
Chiswick Lane is located less than half a mile from both Turnham Green Terrace and Chiswick High Road and there are excellent links to the A4.

Features

Split-Level
Period Conversion
Three Bedrooms
Separate Kitchen
Ideal For Sharers
Central Location

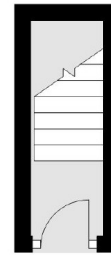
Chiswick Lane, London, W4

First Floor



Total area: approx. 89.3 sq. metres (960.7 sq. feet)

Ground Floor



Second Floor

