



FIRS AVENUE, SW14

£2,500,000

Semi-detached
Five Bedrooms
Newly Built
Off street parking
Large private garden
Entertainment room

@marshandparsons
marshandparsons.co.uk

MARSH &
PARSONS

ABOUT THE PROPERTY

Marsh and Parsons are proud to bring you an exceptional opportunity to acquire one of only two newly built semi-detached homes, quietly positioned in a highly desirable Parkside cul-de-sac. This impressive five bedroom property combines contemporary design with generous proportions, featuring a detached garden studio, gated off-street parking, and a 90 ft rear garden.

New-build houses of this calibre are seldom available in Sheen, making this a rare offering.

Arranged over four spacious floors, the property provides extensive and versatile accommodation, perfectly suited to modern family living.

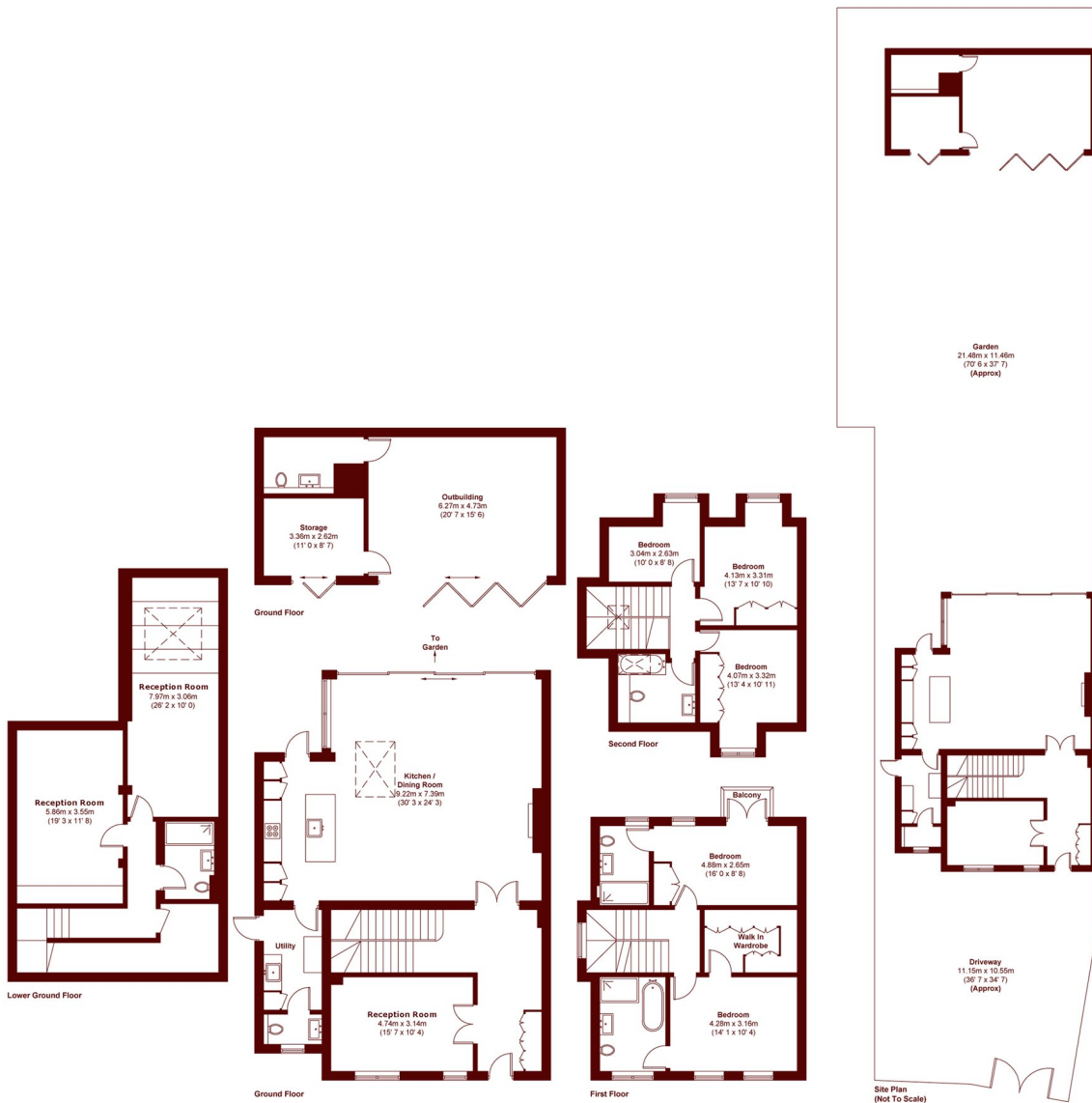








STEP INSIDE FIRS AVENUE



APPROX. GROSS INTERNAL FLOOR AREA = 3075 SQFT / 285.7 SQM
 APPROX. GROSS EXTERNAL OUTBUILDING AREA = 502 SQFT / 46.6 SQM
 APPROX. GROSS EXTERNAL BALCONY AREA = 15 SQFT / 1.4 SQM

Barnes & East Sheen
 020 8563 8333

Energy Rating: B We aim to make our particulars both accurate and reliable. However, they are not guaranteed; nor do they form part of an offer or contract. If you require clarification on any points then please contact us, especially if you're traveling some distance to view. Please note that appliances and heating systems have not been tested and therefore no warranties can be given as to their good working order

**MARSH &
 PARSONS**