



Adamsrill Road, London

Asking Price £250,000



Property Summary

A spacious one bedroom flat with a private balcony, separate kitchen / diner and NO CHAIN offered to the market by Propertyworld. This top floor flat is spacious, flooded in natural light and packed with incredible storage space. Benefiting from generous rooms, and a flowing layout this is a rare property and ideal for discerning first time buyers.

Crisp and contemporary, the entrance hall flows through into a beautiful lounge with a wall of double glazed glass filling the space with light. A bamboo wood floor extends throughout and freshly painted walls with neutral tones add to the clean, airy feel. To the side is a really charming and rare kitchen / diner. A beautiful well thought out space which has just been re-fitted with ample worktop, shelf space, generous wall and base units, a stainless steel sink, modern lighting AND space for a dining room table and chairs.

Full width double glazed patio doors lead to the private balcony. A space to watch the sunset with a beer or glass of wine after a long day at work, with enough room to grow plants or flowers in containers. To the other side of the property, the bedroom is a generous double with newly fitted carpet and full height built-in wardrobes, neutral decor and a double glazed window. Back in the hallway there are three huge storage cupboards - big enough to accommodate bikes and all manner of personal belongings. The bathroom is modern with a white three piece suite and mains shower over bath. Location wise, the flat is close to shops, amenities and a short walk to Sydenham High Street and pretty Mayow Park, with its cafe, tennis courts and laid back vibe.

Sydenham Sales
020 8488 0011
www.propertyworlduk.net

Property Summary

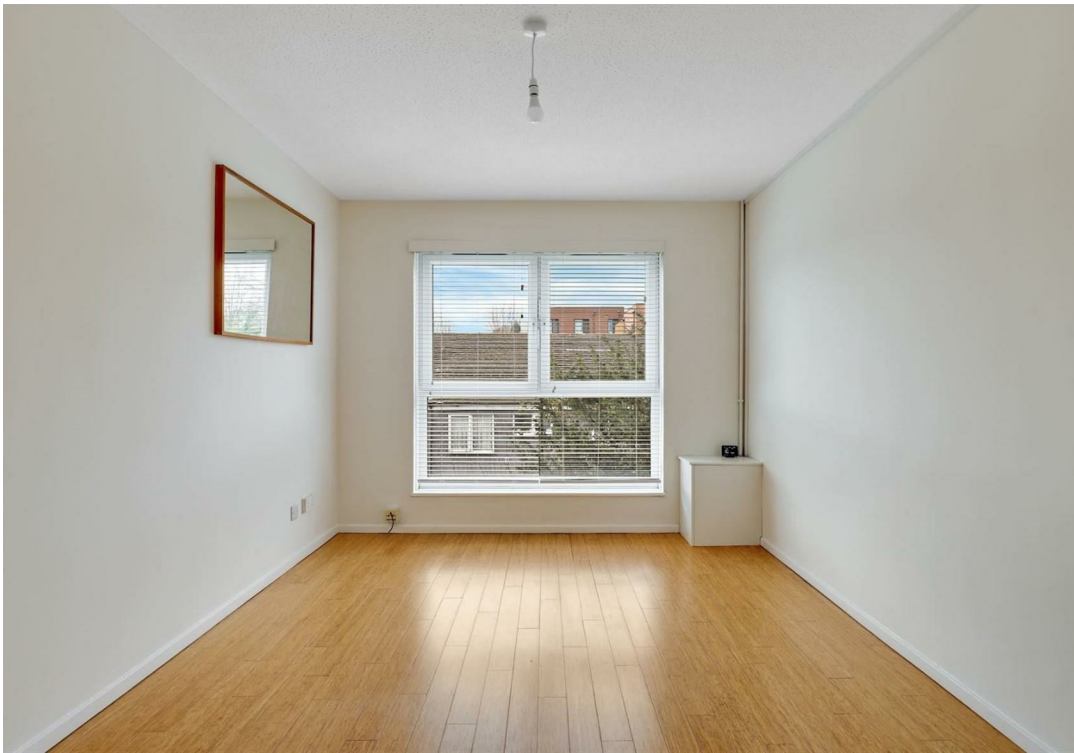
- One bedroom flat
- Separate kitchen / diner
- Modern, post war
- Huge amounts of storage
- Private BALCONY
- CHAIN FREE
- Ideal first time buy
- Top floor, small block
- Excellent order
- EPC rating is C / Council tax is A

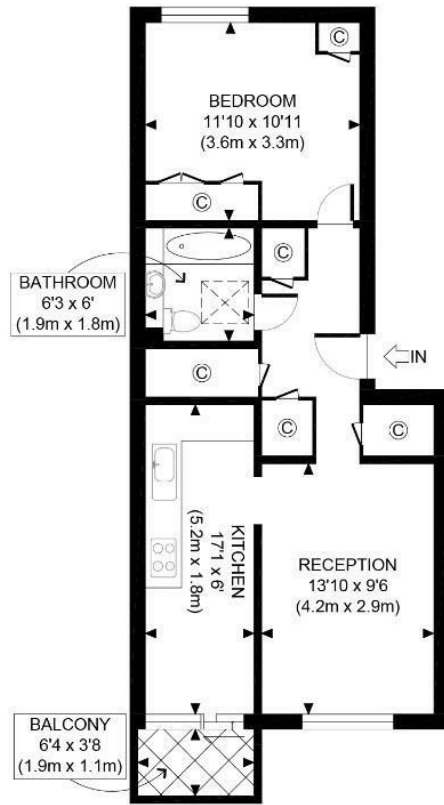
Our Vendor Loves...

Our Vendor Loves...

"I have loved living at Paxton Court. It's light and airy in summer and super cosy in winter. To have some outside space as well as a proper kitchen / diner with room to sit in is such a bonus. The storage space is epic, with room for two bikes, a washing machine and loads more. Like having a separate shed and utility room! It's a quiet flat with shops and green space on your doorstep, and I loved being on the top floor too, with better light and lots of security."

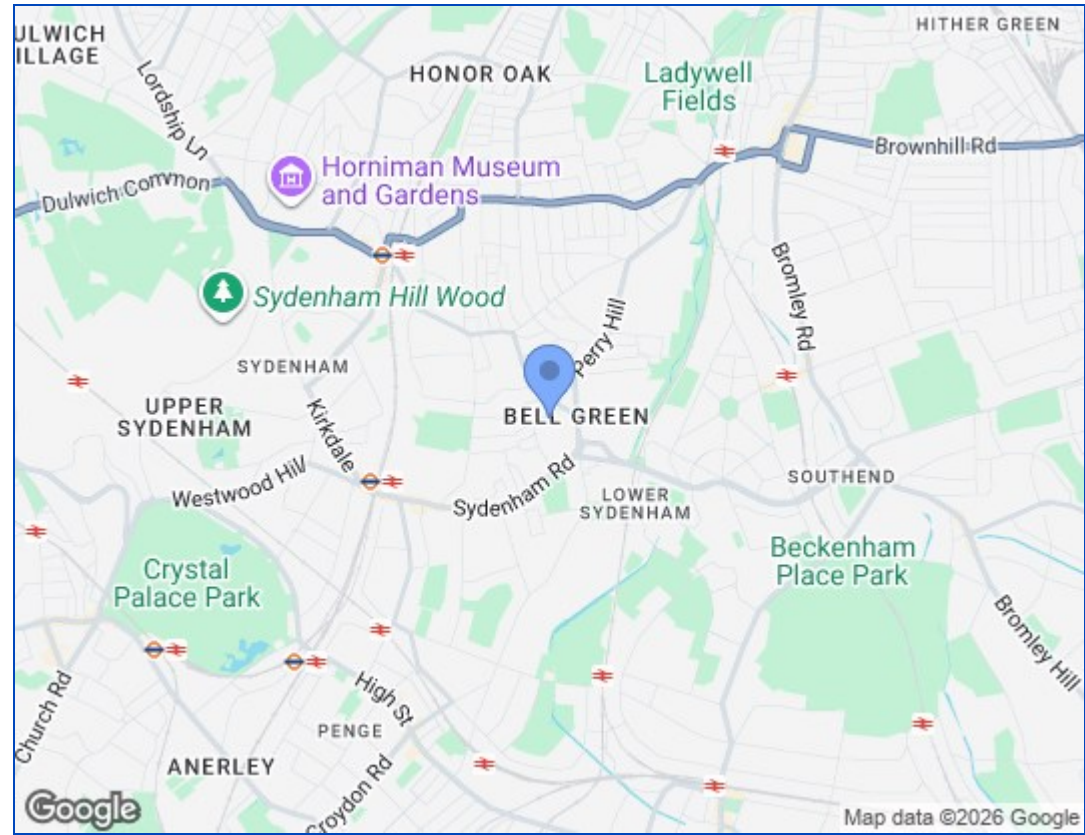






SECOND FLOOR
GROSS INTERNAL
FLOOR AREA 521 SQ FT

| | |
|---|---------------------|
| APPROX. GROSS INTERNAL FLOOR AREA 521 SQ FT / 48 SQM | Paxton court |
| Disclaimer: Floor plan measurements are approximate and are for illustrative purposes only. While we do not doubt the floor plan accuracy and completeness, you or your advisors should conduct a careful, independent investigation of the property in respect of monetary valuation | date 02/03/26 |
| | photoplan |



| Energy Efficiency Rating | | |
|---|-------------------------|-----------|
| | Current | Potential |
| Very energy efficient - lower running costs | | |
| (92 plus) A | | |
| (81-91) B | | |
| (69-80) C | 76 | 76 |
| (55-68) D | | |
| (39-54) E | | |
| (21-38) F | | |
| (1-20) G | | |
| Not energy efficient - higher running costs | | |
| England & Wales | EU Directive 2002/91/EC | |

These particulars, whilst believed to be accurate are set out as a general outline only for guidance and do not constitute any part of an offer or contract. Intending purchasers should not rely on them as statements of representation of fact, but must satisfy themselves by inspection or otherwise as to their accuracy. No person in this firm's employment has the authority to make or give any representation or warranty in respect of the property.

