



3 Old Sheep Wash Barn | Nenthead | Alston | CA9 3LW

Price Guide £345,000



david britton
ESTATES



Key Features

- Semi detached barn conversion
- Three bedrooms
- Two bathrooms plus separate WC
- Open plan living kitchen diner
- 2 Acres of land
- Hardstanding parking for several vehicles
- Amazing views
- Northern Pennines Area of Outstanding Natural Beauty

Summary

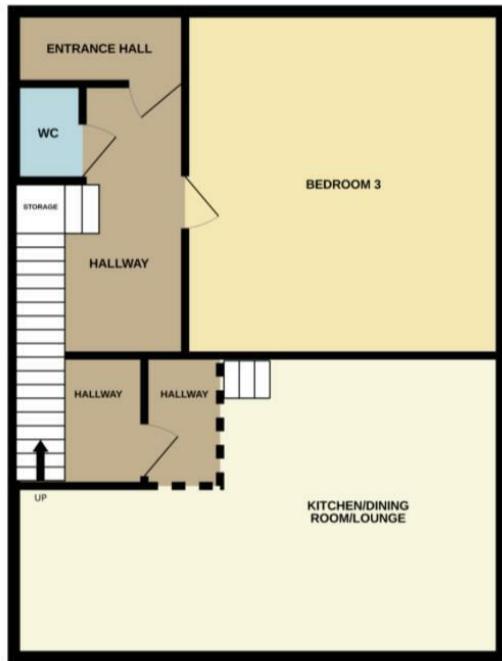
Stunning three bedroomed semi detached barn conversion set within 2 acres of land, found above the village of Nenthead with incredible views from every direction.



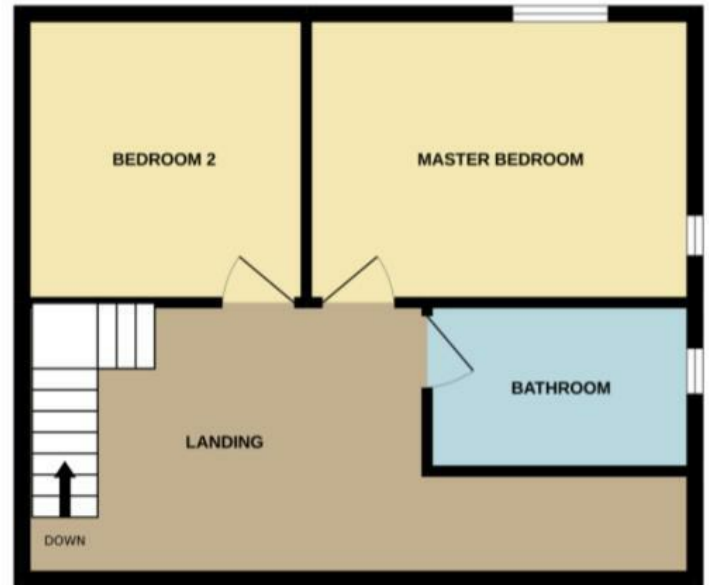


Floor plans

GROUND FLOOR



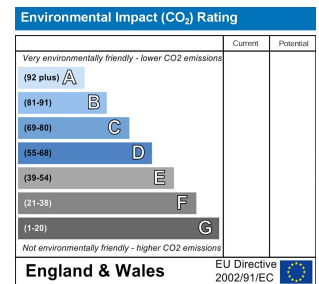
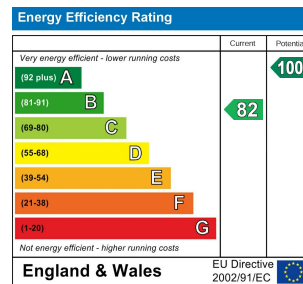
1ST FLOOR



COUNCIL TAX BAND - C

DISCLAIMER

These particulars, whilst believed to be accurate are set out as a general guideline and do not constitute any part of an offer or contract. Intending Purchasers should not rely on them as statements of representation of fact but must satisfy themselves by inspection or otherwise as to their accuracy. The services, systems, and appliances shown may not have been tested and has no guarantee as to their operability or efficiency can be given. All floor plans are created as a guide to the lay out of the property and should not be considered as a true depiction of any property and constitutes no part of a legal contract.



Unit 3 Mason Court Gillan Way, Penrith 40 Business Park
 Penrith
 Cumbria
 CA11 9GR
 01768881111
 Sales@brittonestates.co.uk
 www.brittonestates.co.uk