



## Garden Road, NW8

£425 Per week

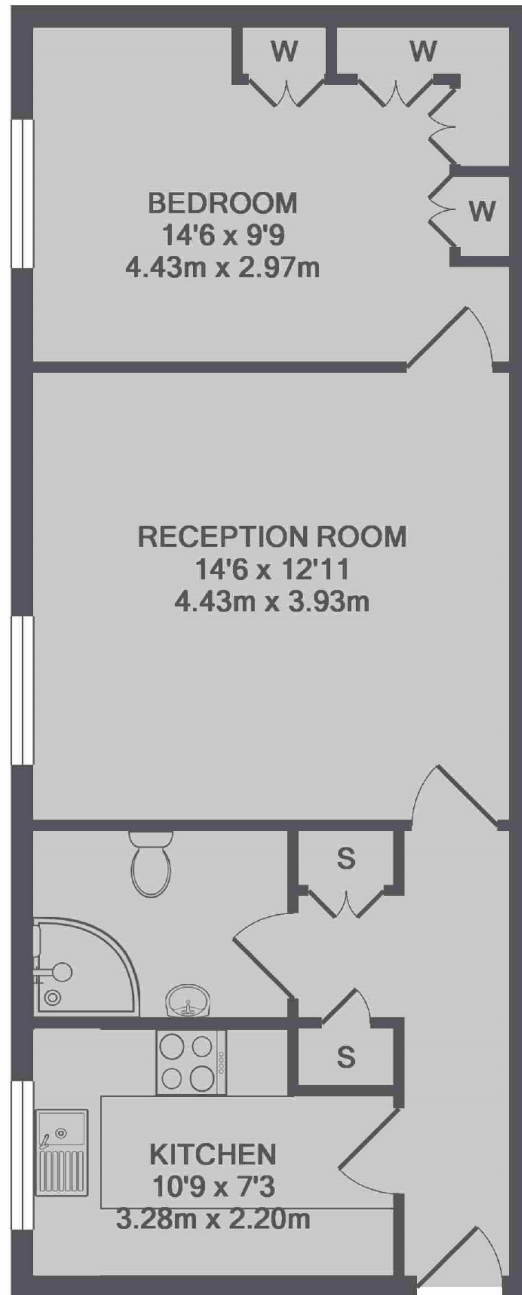
A spacious one bedroom apartment in a purpose built block located a short distance from St John's Wood tube station. Good size reception room with wood floors, separate kitchen with integrated appliances including a dishwasher, refurbished shower room and great storage throughout.

Garden Court is located on Garden Road which is a short distance to St John's Wood tube station and local shops, cafés and restaurants on the High Street.

### Features

- One Double Bedroom
- Modern Kitchen
- Communal Garden
- Caretaker
- Communal Heating And Hot Water Included
- Wood Floors Throughout

Garden Road,  
London, NW8



TOTAL APPROX. FLOOR AREA 539 SQ.FT. (50.1 SQ.M.)

**Dexters**

St. John's Wood  
4-6 St Ann's Terrace  
London  
NW8 6PJ

Lettings  
020 7483 6330

Energy Rating: D. We aim to make our particulars both accurate and reliable. However they are not guaranteed; nor do they form part of an offer or contract. If you require clarification on any points then please contact us, especially if you're traveling some distance to view. Please note that appliances and heating systems have not been tested and therefore no warranties can be given as to their good working order.

 **RICS** | Regulated  
Estate Agent  
and Letting Agent

[dexters.co.uk](http://dexters.co.uk)