



HUNTERS[®]
HERE TO GET *you* THERE

Mais 2nd Floor Rear & 3rd Floor 9 South Villas, London, NW1 9BS

Mais 2nd Floor Rear & 3rd Floor 9 South Villas, London, NW1 9BS

£2,650 Per Calendar Month

Hunters Camden is delighted to present this stunning two double bedroom maisonette apartment, occupying the top two floors of a beautifully converted Victorian house. Situated on a quiet and picturesque street in one of Camden's most desirable areas, this property perfectly combines modern living with classic charm, making it ideal for couples, sharers, or a family.

Upon entering the property, you are welcomed by a small utilities area and a stylish family bathroom complete with a bathtub. Two spacious double bedrooms are located directly ahead, offering comfort, natural light, and versatility for either relaxation or work-from-home space.

The open plan living room and kitchen occupy the entire second floor, where large sliding doors allow light to flood the space, creating a bright and inviting atmosphere. The kitchen is modern and well-equipped, seamlessly connecting with the living area, perfect for entertaining or day-to-day living. From the living room/kitchen area, you can access a private roof balcony. This spacious outdoor area faces the residential street, providing picturesque views from both the front and the back of the property, ideal for enjoying a morning coffee or evening unwind.

Partly furnished and exceptionally bright throughout, this maisonette offers a charming mix of contemporary amenities and classic Victorian character. With its quiet location, stunning roof balcony, and light-filled interiors, this property presents an exceptional living experience in the heart of Camden.

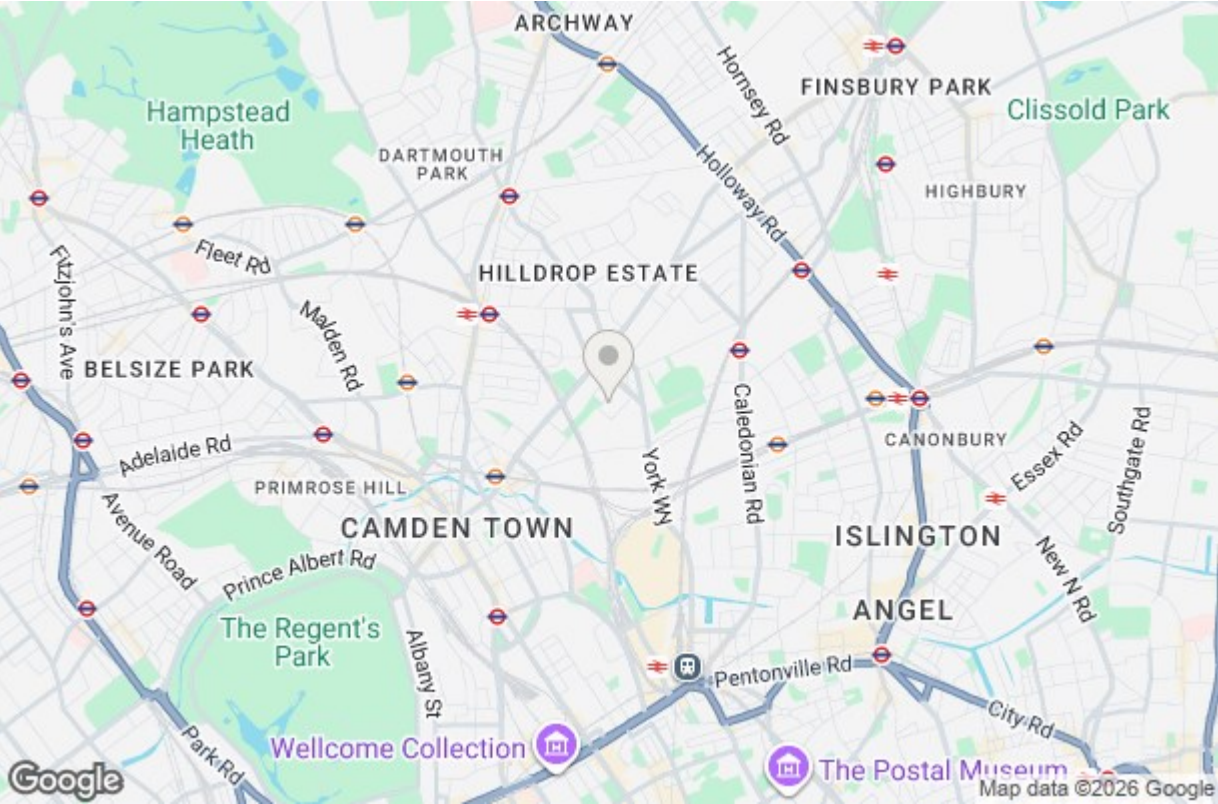
Contact us today to arrange a viewing and secure this beautiful home!

Hunters Camden Lettings 86 Camden Road, Camden, NW1 9EA | 020 7916 0313
camden.lettings@hunters.com | www.hunters.com

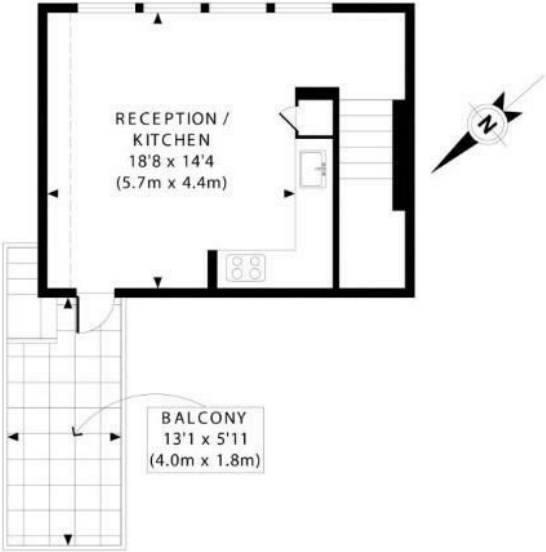




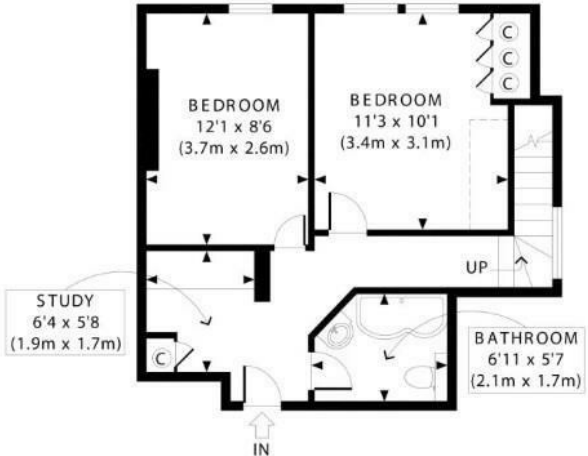
Area Map



Floorplan



FIRST FLOOR
GROSS INTERNAL
FLOOR AREA 258 SQ FT



GROUND FLOOR
GROSS INTERNAL
FLOOR AREA 377 SQ FT

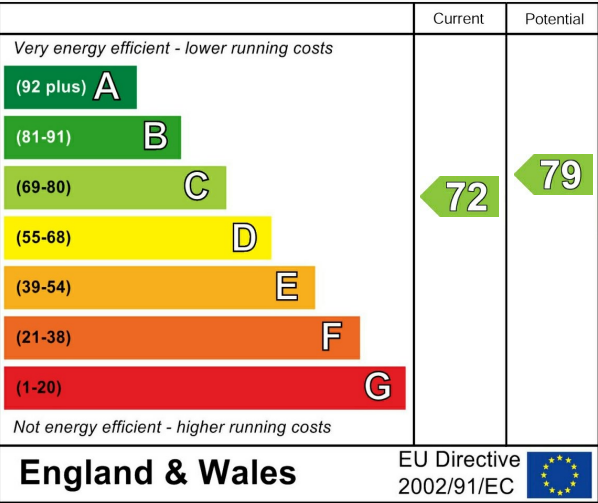
APPROX. GROSS INTERNAL FLOOR AREA 635 SQ FT / 59 SQ M
Ref: GCBPL - 200514

Copyright **photoplan**

Disclaimer: Floor plan measurements are approximate and are for illustrative purposes only. While we do not doubt the floor plan accuracy and completeness, you or your advisors should conduct a careful, independent investigation of the property in respect of monetary valuation

Energy Efficiency Rating (EPC)

Energy Efficiency Rating



Environmental Impact (CO₂) Rating

