

HS HAIR & SON



The Broadway

Thorpe Bay, Southend-on-Sea SS1 3EU

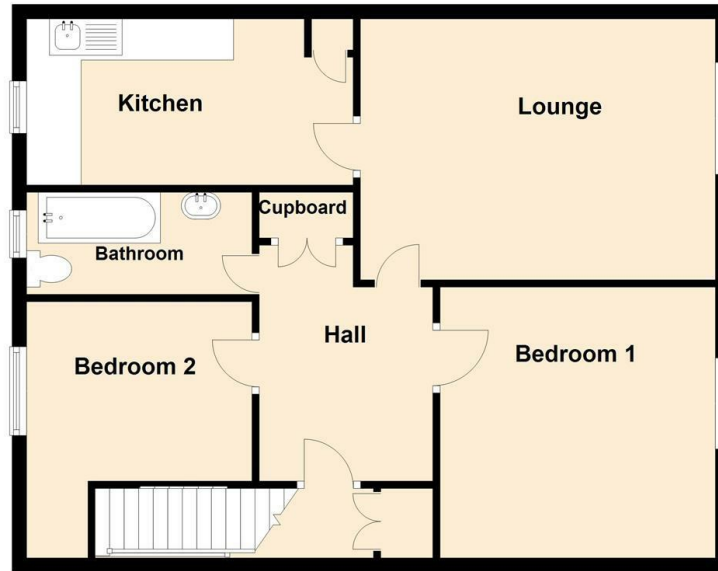
- SECOND FLOOR FLAT
- GOOD SIZE LOUNGE
- BATHROOM/WC WITH WHITE SUITE
- ON THE BROADWAY AND WALKING DI
- TWO DOUBLE BEDROOMS
- KITCHEN WITH WORKTOPS AND CUPBOARDS
- GAS CENTRAL HEATING
- SECURE GATED ENTRANCE
- NO ONWARD CHAIN

Guide Price £250,000 Leasehold

Local Authority **Southend on Sea Borough Council**
Council Tax Band **B**
EPC Rating **D**

First Floor

Approx. 70.2 sq. metres (756.0 sq. feet)



Ground Floor

Approx. 2.0 sq. metres (21.7 sq. feet)



Total area: approx. 72.3 sq. metres (777.8 sq. feet)

Sales Office

190 London Road, Southend-On-Sea,
Essex, SS1 1PJ

Contact

01702 34 11 77

<https://hairandson.co.uk/>

Agents Note: Whilst every care has been taken to prepare these particulars, they are for guidance purposes only. All measurements are approximate and for general guidance purposes only and whilst every care has been taken to ensure accuracy, they should not be relied upon and potential buyers/tenants are advised to recheck the measurements.

