



9 ORMESBY CRESCENT, NORTHALLERTON

OFFERS IN THE REGION OF £260,000



Northallerton
Estate Agency



Ormesby Crescent

Northallerton, DL7 8RP

The property comprises a brick built with clay pantile roof, 2-bedroom semi-detached bungalow, situated on a nice quiet cul-de-sac off Ormesby Road with direct links from Thirsk Road to Broomfield. The property is in walking distance of Northallerton high street and train station, it enjoys UVPC throughout with gas fired central heating and is very well laid out and spacious, very well presented.

- 2 bedrooms
- Double Garage
- Tax Band C
- Semi-Detached Bungalow
- Highly Sought After Residential Area
- Close to local amenities



Entrance

Entering the property through a UVPC double glazed front door with upper etched glass light into an entrance hall enjoying inset matwell and proceeding onto carpet, mini coved ceiling, ceiling light point, radiator, attic access. Built in cloaks cupboard with hanging hooks and useful space for storage.

Sitting room

Mini coved ceiling, ceiling light point, low level double radiator sitting beneath a large window to front with display window ledges, 3 wall light points, feature mahogany fire surround and mantle shelf with granite backplate and hearth enjoying a hearth mounted electric fire and completed by a TV point.

Kitchen

Enjoying an attractive range of light oak fronted base and wall cupboards, granite effect worksurfaces with inset single drain single bowl stainless steel sink unit with quality mixer tap over, unit inset 4 ring glass hob with brushed steel and glass oven beneath, brushed steel extractor over hob with light and fan, space and plumbing for washing machine, space for fridge and freezer, tiled splashbacks, mini coved ceiling, ceiling light point, partially concealed logic condensing central heating boiler, radiator, upper etched glass double glazed door to the driveway. Internal door gives access to an airing cupboard housing lag cylinder and emersion heater with shelf storage around.

Bedroom 1

Enjoys the benefit of radiator, ceiling light point, coved ceiling, wall mounted cloaks hanging, nice views out to the rear garden, TV point.

Bedroom 2

Mini coved ceiling, ceiling light point, radiator, nice view out to front garden.

Shower room

½ tiled walls with fully tiled shower cubical with a thermostatically controlled Mira mains shower, pivoted entrance door, ceiling spotlights, concealed cistern duo flush toilet with cupboard beneath, additional cupboard storage with mounted basin with quality mixer taps and shower socket to side, extractor and ceiling light point, heated towel rail.

Garden

Entering through twin brick pillars with wrought iron gates between, post and plank low level fence at the front, sitting behind is the front garden, which is laid to lawn with shrub boarders, tarmacadam driveway running down the side of the property with parking for 3 vehicles and giving access to the detached garage and also a tarmacadam walkway leading to the front door. The rear garden is comprised of a flagged patio opening out onto a main lawned garden area with raised shrubbery around, flagged walkway up the side between the lawn and garage giving access to a raised greenhouse with internal workbench which has benefit of light and power sitting on a stone plinth.

Double Garage

Brick built with a monopitch roof on a concrete plinth enjoying the benefit of up and over door to front, internally enjoys light and power and workshop area with space for a dryer, to the rear of the garage there is a double glazed sunroom with twin French doors in and enjoying the benefit of light a power with a nice view onto the garden.

VIEWING - BY APPOINTMENT THROUGH THE AGENCY - Tel. No. 01609 771959

TENURE - FREEHOLD

SERVICES - MAINS GAS, WATER, ELECTRIC & DRAINAGE

NYCC TAX BAND - C

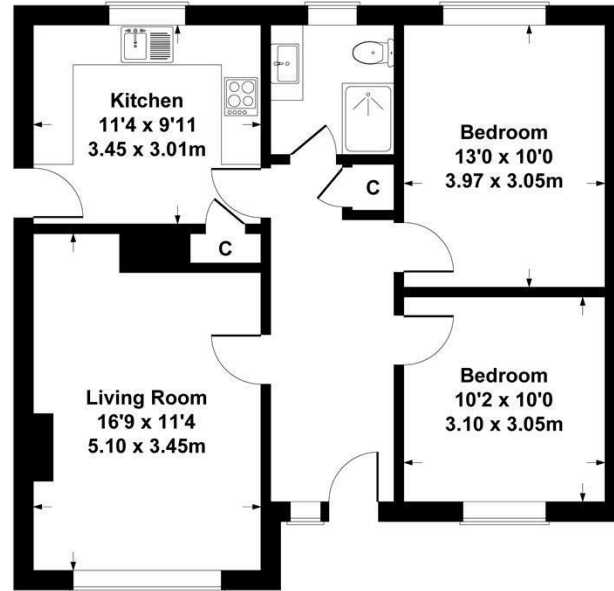
EPIC - C



Call us to arrange a viewing on **01609 771959**

9 Ormesby Crescent, DL7 8RP

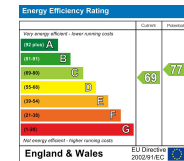
Approximate gross internal area
House - 66 sq m - 710 sq ft



SKETCH PLAN FOR ILLUSTRATIVE PURPOSES ONLY

All measurements walls, doors, windows, fittings and appliances, their sizes and locations, are approximate only. They cannot be regarded as being a representation by the seller, nor their agent.

Produced By Vue3Sixty



Northallerton Estate Agency does not seek to avoid our criminal and civil liabilities by the use of cleverly worded small print. Our staff have undergone training and follow set procedures, but it is not possible for us to guarantee that everything written in our sales particulars is accurate. Please note that unless stated otherwise:

- These particulars have been prepared in all good faith to give a fair and overall view of the property. If any points are particularly relevant to your interest in the property, then please ask for further information/verification
 - These particulars are set out as a general outline only for the guidance for intending purchasers and do not constitute, nor constitute a part of, an offer or Contract.
 - All descriptions, dimensions, measurements, distances referred to, are given as a guide only and are NOT precise. If such details are fundamental to purchase, purchasers must rely on their own enquiries. All statements do not constitute any warranty or representation by the Vendor or his/her Agents.
 - We have NOT been instructed to carry out a physical survey of the property, a structural survey nor to test any of the services, fixtures, fittings or appliances which pass through, in, on, over, under or attached to the property (whether or not referred to in these particulars). Any equipment appliance or service mentioned, has not been tested by us, nor is it the subject of any guarantee.
 - Any plans may not be to scale and are for identification purposes only.
 - Items included in the written text are included in the sale. All others are excluded regardless of their inclusion of any photograph.
 - You should place no reliance on anything stated verbally by any of our staff unless the matter is confirmed by us in writing. If any issue (included or not in these particulars) is of major importance to your interest in this property, please ask us for further information.
- In the event of any grievance, via our in-house complaints procedure we will consider why we may not have given you the high standards you have a right to expect from us.

143 High Street, Northallerton, North Yorkshire, DL7 8PE

T: 01609 771959

E: sales@northallertonestateagency.co.uk

www.northallertonestateagency.co.uk



Northallerton
Estate Agency