



Bright and homely two-double bedroom ground floor Edwardian maisonette with its own front entrance and own rear garden. The internal accommodation comprises: a frontal lounge/reception room, a fitted kitchen, two double bedrooms, a bath/shower room/WC, and double-glazed conservatory. The property is ideally located close to Alexandra Palace National Rail & Bounds Green Tube stations (20/25 Mins City/West End) and the attractive green open spaces of Alexandra Park & Palace itself.

Albert Road, Alexandra Park, London, N22 7AH

Offers in excess of £575,000 |

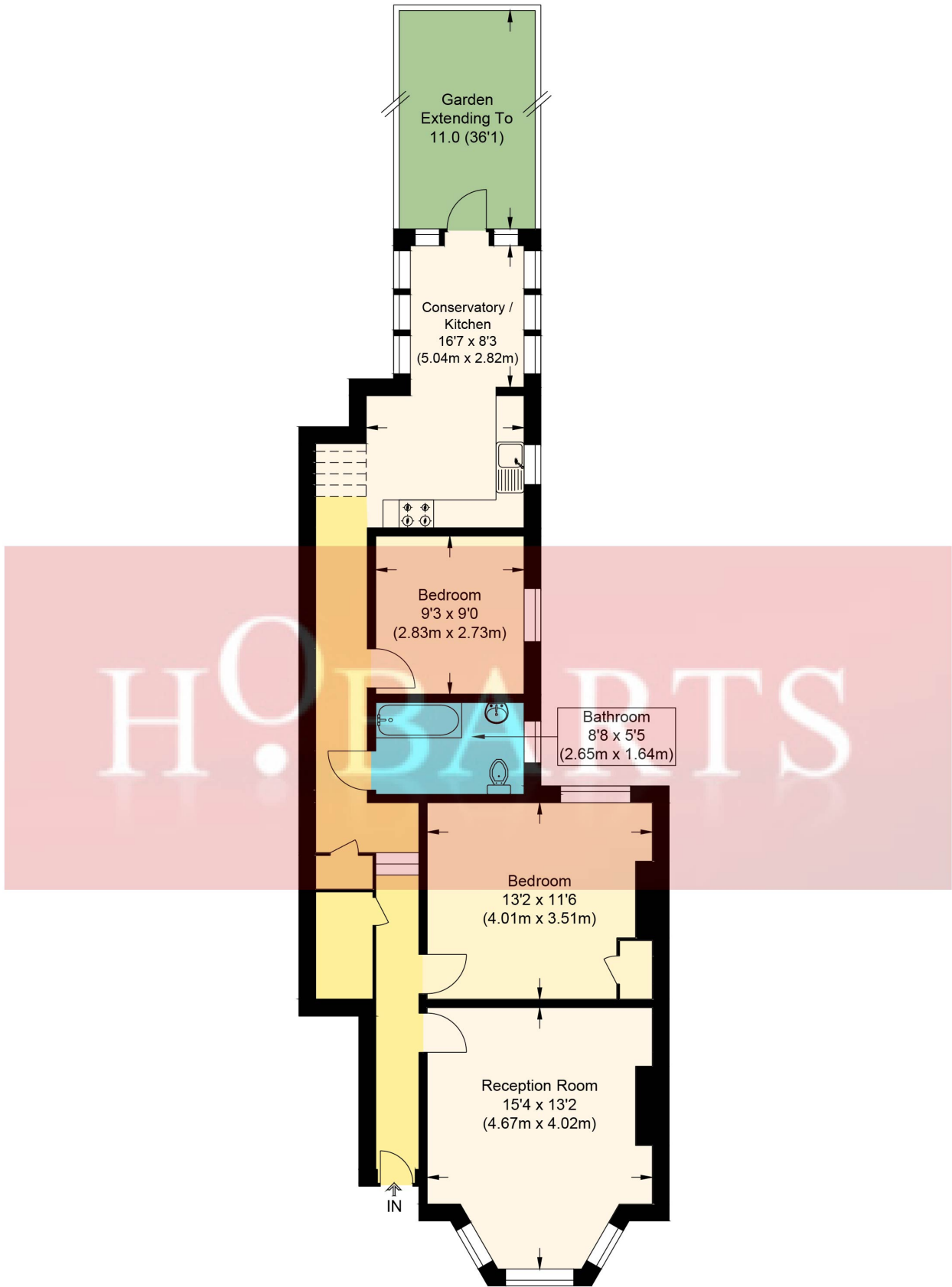
HOBARTS ESTATE AGENTS - LONDON (North)
8 CRESCENT ROAD
Alexandra Park
LONDON N22 7RS

sales@hobartsproperty.co.uk
www.hobartsproperty.co.uk
0208 348 3333



- Ground Floor Edwardian Maisonette
- Own Rear Garden
- Bathroom/Shower/WC
- UPVC Double Glazed Conservatory

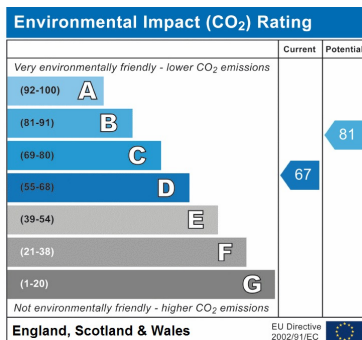
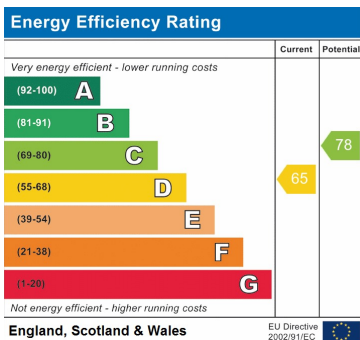
- Two-Double Bedrooms
- Modern Fitted Kitchen
- Close to Great Transport Links
- (20/25 Mins City/West End)



Albert Road

Approximate Gross Internal Area : 72.80 sq m / 783.61 sq ft

Illustration for identification purposes only, measurements are approximate, not to scale.



Tenure:

Viewings:

Strictly by appointment via
HOBARTS ESTATE AGENTS
0208 348 3333

Contact:

8 CRESCENT ROAD, Alexandra
Park, LONDON N22 7RS

sales@hobartsproperty.co.uk
www.hobartsproperty.co.uk

rightmove

PrimeLocation.com

homes24.co.uk

Zoopa.co.uk

propertyfinder.com



These property details, including measurements, floor plans and items depicted in photographs etc. are intended only as a brief guide to prospective purchasers and are not intended to be relied upon for any purpose whatsoever. Any interested party should satisfy themselves by inspection or otherwise as to the correctness of each statement contained in these details.