



HUNTERS[®]
HERE TO GET *you* THERE

Icons representing a bed, the number 2, a shopping cart, a sofa, and the HUNTERS logo.

Queens Terrace, Southampton



Offers In Excess Of £180,000

This property offers an opportunity for investors/ Buy-to-Let Landlords and first-time buyers alike, and is available with no onward chain. Further, this property has a valid EICR and Gas Safety Certificate.

Nestled in the heart of Southampton, The Oriental is a stunning Grade II-listed building that exudes timeless charm. Overlooking the lush greenery of Queens Terrace, this historic gem dates back to the 1880s. Originally known as Kelway's Hotel, it later became Kelway's Oriental Hotel before taking on its final name, The Oriental Hotel, in 1906.

Step inside this split-level property to find a spacious lounge, kitchen, and dining area. The high ceilings and original period features contribute to a sense of elegance, while a bay window provides natural light and views of the park.

The property includes two double bedrooms, with the main bedroom featuring an en-suite shower room. A family bathroom adds to the home's comfort and functionality.

Ideally located, The Oriental is just a short stroll from Southampton City Centre, with its shopping, dining, and entertainment options,

including
commu
connec

For
fer easy

No des

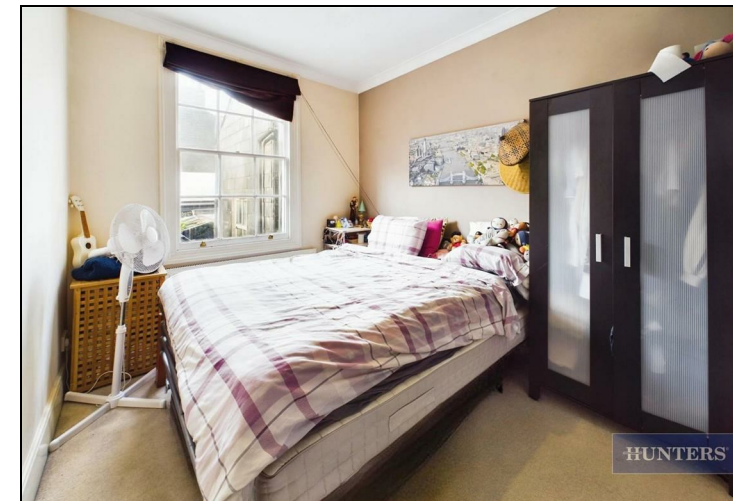
Tenure
Leaseh
Leaseh
Leaseh
Counci

38 Bedford Place, Southampton, Hampshire, SO15 2DG | 02380 987 720
southampton@hunters.com | www.hunters.com



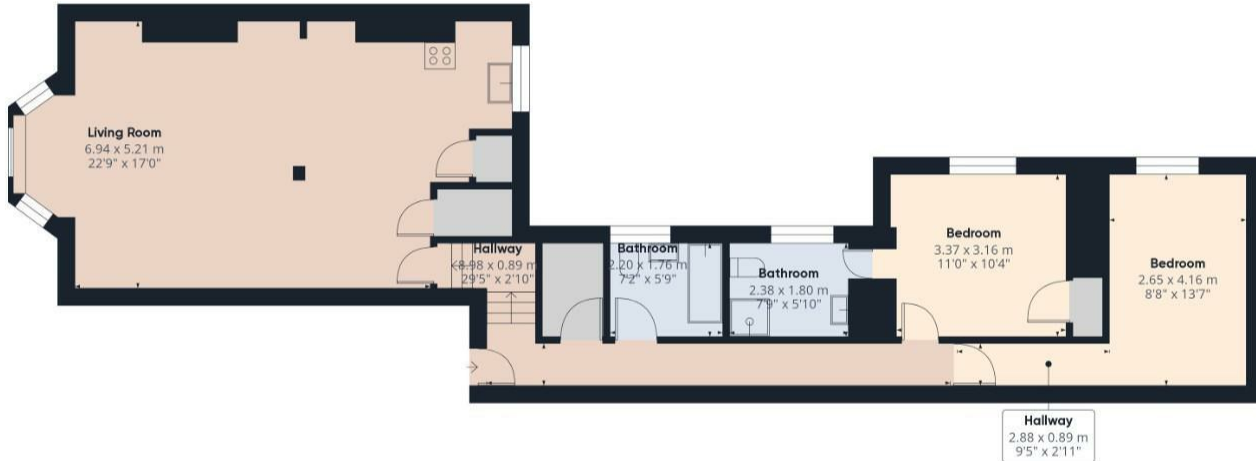
KEY FEATURES

- Grade II Listed Building
 - Two Bedrooms
 - Two Bathrooms
- Tenants in Situ on Periodic
 - Gas Central Heating
 - Ample Storage Space
- Valid EICR & Gas Safety Certificate
 - Close to Local Amenities
 - EPC: C
 - Council Tax: D





HUNTERS



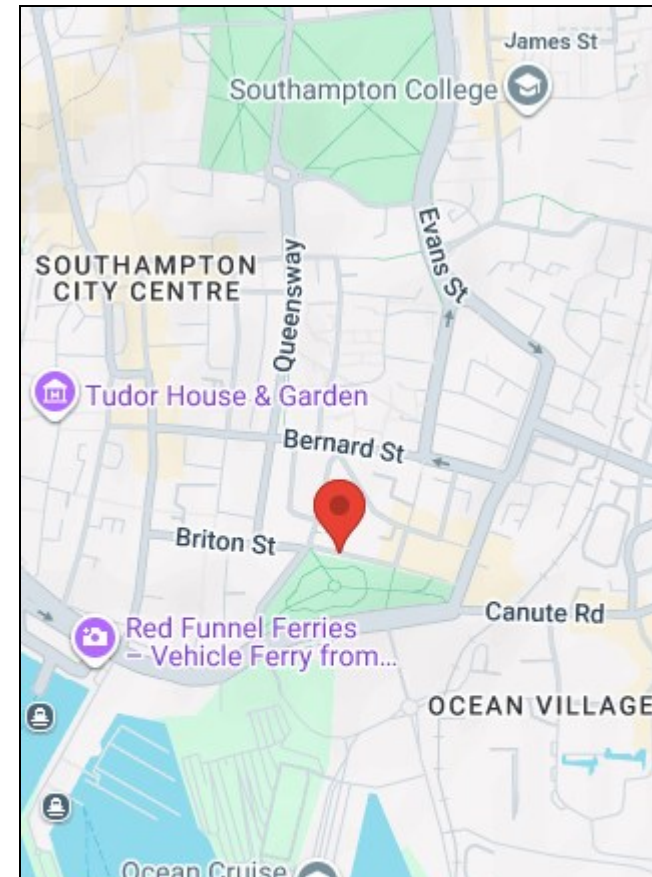
Approximate total area¹⁾
89.54 m²
963.79 ft²

(1) Excluding balconies and terraces.

While every attempt has been made to ensure accuracy, all measurements are approximate, not to scale. This floor plan is for illustrative purposes only.

Calculations are based on RICS IPMS 3C standard.

GIRAFFE360



Energy Efficiency Rating	
Current	Potential
Very energy efficient - lower running costs	
(92 plus) A	
(81-91) B	
(69-80) C	
(55-68) D	
(39-54) E	
(21-38) F	
(1-20) G	
Not energy efficient - higher running costs	
69	76
EU Directive 2002/91/EC	
England & Wales	

Environmental Impact (CO ₂) Rating	
Current	Potential
Very environmentally friendly - lower CO ₂ emissions	
(92 plus) A	
(81-91) B	
(69-80) C	
(55-68) D	
(39-54) E	
(21-38) F	
(1-20) G	
Not environmentally friendly - higher CO ₂ emissions	
EU Directive 2002/91/EC	
England & Wales	

38 Bedford Place, Southampton, Hampshire, SO15 2DG | 02380 987 720
southampton@hunters.com | www.hunters.com



This Hunters business is independently owned and operated by Clegg Properties Ltd | Registered Address 27 Westfield Road, Lymington, Hampshire, England, SO41 3PZ | Registered Number: 06421594 England and Wales | VAT No: 188 0548 76 with the written consent of Hunters Franchising Limited.