

WE VALUE



YOUR HOME



Wyndham Gardens, Wallingford
£795,000



Set within a cul-de-sac just a short stroll from Wallingford town centre, this four-bedroom detached home is beautifully presented and thoughtfully extended to suit modern family living.

The ground floor offers a welcoming entrance leading to a spacious open-plan kitchen/diner, complete with an island breakfast bar, dual-aspect windows and plenty of space for entertaining. The lounge features a bay window and fireplace, while a versatile snug provides the perfect spot for a home office, playroom, or relaxation space. A separate utility room and a convenient cloakroom complete the downstairs layout.

Upstairs, there are four well-proportioned bedrooms, three of which are doubles. The main bedroom boasts a sleek en-suite shower room, while a stylish family bathroom serves the remaining rooms.

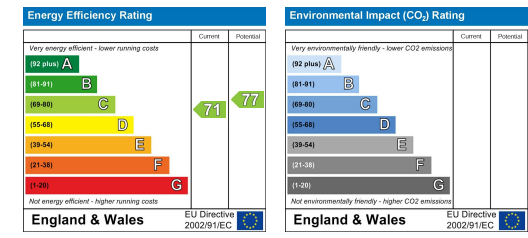
Outside, the rear garden is enclosed by charming brick walling, offering secure space with a good degree of privacy. To the front, there is off-street parking for two vehicles.

What the owner says:
"There's a lovely community in the cul-de-sac, and we're within close proximity to the town centre and all its amenities."



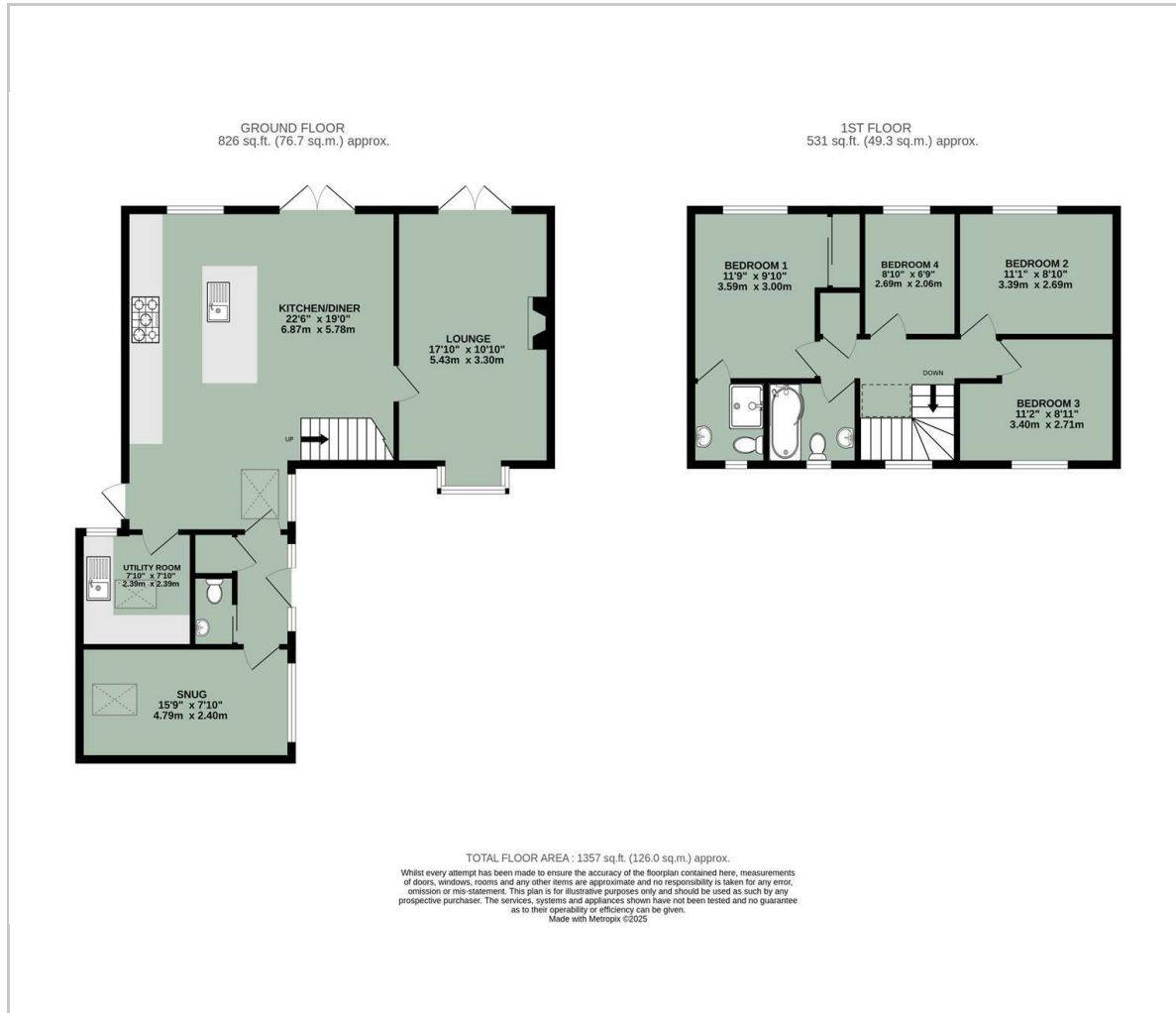


- BEAUTIFULLY PRESENTED & EXTENDED – A STYLISH AND SPACIOUS DETACHED FOUR-BEDROOM FAMILY HOME
- PRIME LOCATION – TUCKED AWAY IN A CUL-DE-SAC JUST A SHORT STROLL FROM THE HEART OF WALLINGFORD
- CONTEMPORARY OPEN-PLAN SPACE WITH CENTRAL ISLAND AND BREAKFAST BAR, PERFECT FOR ENTERTAINING
- VERSATILE GROUND FLOOR LIVING – INCLUDES A GENEROUS LOUNGE, COSY SNUG, PRACTICAL UTILITY ROOM, AND CONVENIENT CLOAKROOM
- MODERN BATHROOMS - EN-SUITE & FAMILY BATHROOM
- ENCLOSED REAR GARDEN
- OFF-STREET PARKING FOR TWO VEHICLES



Energy Efficiency Graph

Floor Plan



Area Map



Viewing

Please contact our In House Sales & Lettings Office on 01491 839999 opt.1 if you wish to arrange a viewing appointment for this property or require further information.

These particulars, whilst believed to be accurate are set out as a general outline only for guidance and do not constitute any part of an offer or contract. Intending purchasers should not rely on them as statements of representation of fact, but must satisfy themselves by inspection or otherwise as to their accuracy. No person in this firm's employment has the authority to make or give any representation or warranty in respect of the property.

28 St Martins Street, Wallingford, Oxfordshire, OX10 0AL
Tel: 01491 839999 opt.1 Email: sales@inhouseestateagents.co.uk www.inhouseestateagents.co.uk