



House - End Terrace

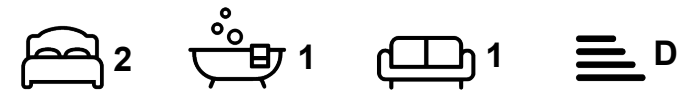
SOUTHEY CLOSE, SHEFFIELD, S5

Per month

£895 Per

FEATURES

- Beautifully presented two-bedroom fully furnished home
- Spacious well-maintained rear garden
- High quality furnishings throughout
- Off-street parking
- Spacious main bedroom with two built-in sliding wardrobes



HIGHGATES
SALES & LETTINGS

2 Bedroom House - End Terrace located in Sheffield

Highgates are delighted to bring to market this spacious and beautifully presented fully furnished two-bedroom end-terraced home, ideally situated within the well connected residential area of Southey Green, Sheffield.

Call us on

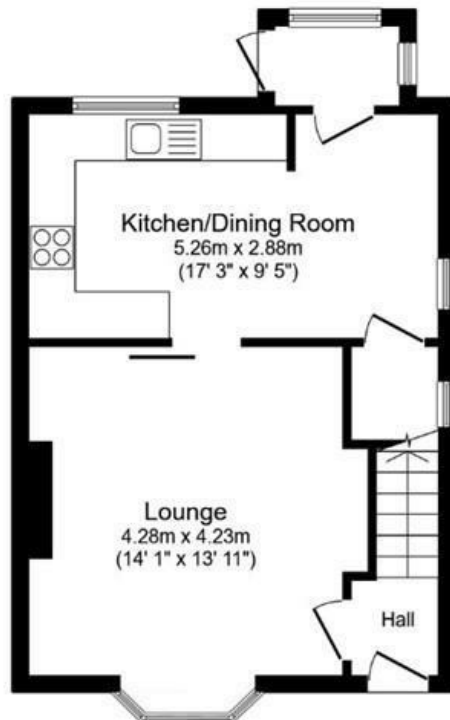
0114 312 4994

info@highgatesstates.co.uk

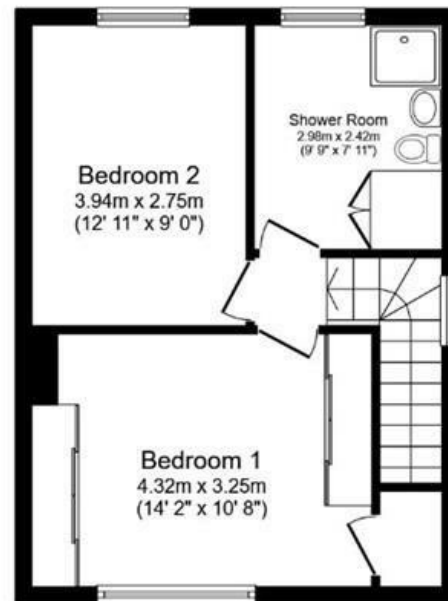
www.highgatesstates.co.uk

Council Tax Band

A



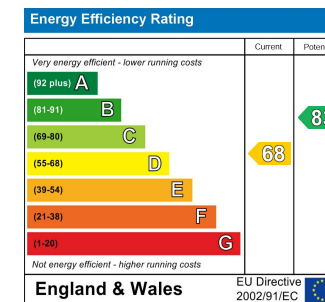
Ground Floor



First Floor

Total floor area 78.4 sq.m. (844 sq.ft.) approx

This floor plan is for illustrative purposes only. It is not drawn to scale. Any measurements, floor areas (including any total floor area), openings and orientation are approximate. No details are guaranteed, they cannot be relied upon for any purpose and they do not form part of any agreement. No liability is taken for any error, omission or misstatement. A party must rely upon its own inspection(s).



Agents Note: Whilst every care has been taken to prepare these particulars, they are for guidance purposes only. All measurements are approximate and are for general guidance purposes only and whilst every care has been taken to ensure their accuracy, they should not be relied upon and potential buyers are advised to recheck the measurements.