



Howsman Road, SW13

£1,500,000

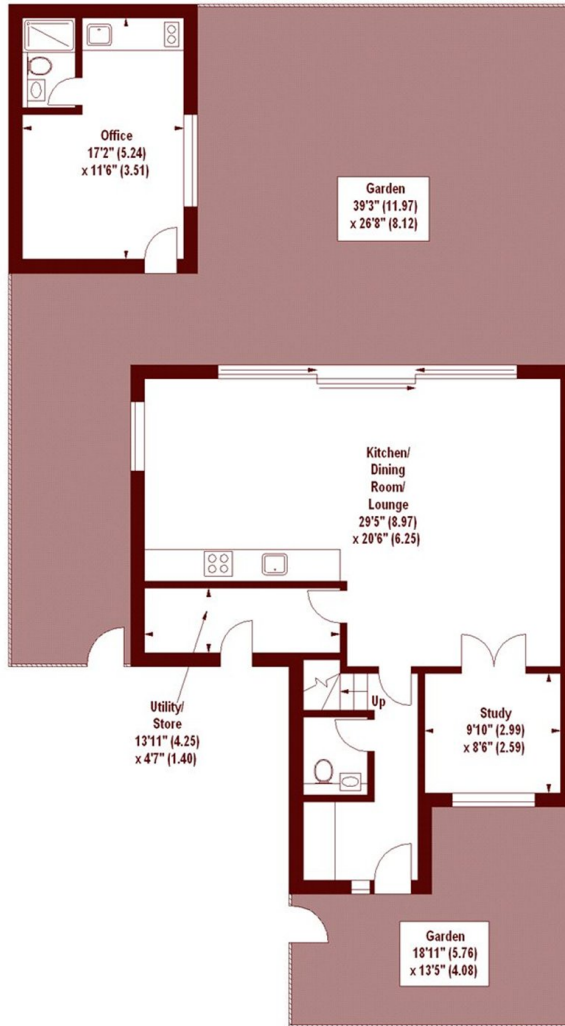


- Semi-detached corner plot
- Modern fully rebuilt family home
- Four Bedrooms
- Three Bathrooms
- Fantastic open-plan living area
- Fully equipped garden studio

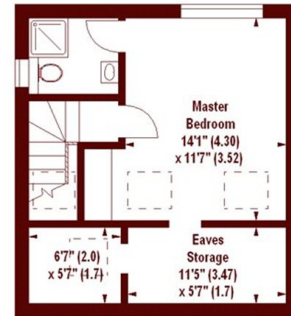
Howsmen Road, SW13

APPROX. GROSS INTERNAL FLOOR AREA 1789 SQFT / 166.20 SQM
(Including Eaves Storage & Garden House)

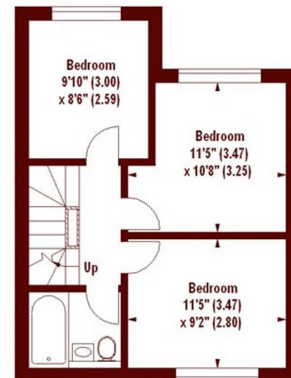
Eaves Storage
99 SQFT / 9.20 SQM
Garden House
198 SQFT / 18.39 SQM



GROUND FLOOR



SECOND FLOOR



FIRST FLOOR

Illustration For Identification Purposes Only. Not To Scale
*Floorplan Drawn According To RICS Guidelines
Copyright of FeaturePRO

Marsh & Parsons Barnes

73-75 Church Road, London,
SW13 9HH
020 8563 8333

We aim to make our particulars both accurate and reliable. However, they are not guaranteed; nor do they form part of an offer or contract. If you require clarification on any points then please contact us, especially if you're traveling some distance to view. Please note that appliances and heating systems have not been tested and therefore no warranties can be given as to their good working order.