

# 9 Fulwell Close

Banbury



**ROUND & JACKSON**  
ESTATE AGENTS



# 9 Fulwell Close

Banbury, Oxon, OX16 4TF

£180,000

A superb two-bedroom, second floor apartment with a single garage and allocated parking which is conveniently located close to the train station, town centre and amenities. Available for sale with no onward chain.

## The Property

9 Fulwell Close, Banbury is a well presented and spacious second floor apartment which is conveniently located within easy reach of the town centre, amenities and railway station. There is an entrance hallway, two large double bedrooms with an en-suite shower room to the master, a family bathroom, sitting room and kitchen. The property benefits from a single garage with an allocated parking space directly in front.

We have prepared a floor plan to show the room sizes and layout, some of the main features include:

## Entrance Hallway

With doors to all accommodation, airing cupboard which houses the hot water cylinder and a useful storage cupboard and hatch to loft space.

## Sitting Room

A spacious reception room with a window to the front aspect and large opening into the kitchen.

## Kitchen

With a range of eye-level cabinets, base units and drawers with fitted worktops, the kitchen features a one-and-a-half bowl sink with drainer, an integrated washer/dryer, a single oven below a four-ring electric hob and an extractor hood above. There is also space for a freestanding fridge/freezer. A window to the side aspect provides natural light.

## Bedroom One & En-Suite

A large double bedroom with a window to the rear aspect. There is a door leading to the en-suite shower room which is fitted with a double shower cubicle, W.C., heated towel rail, wash hand basin with tiled flooring and splash backs.

## Bedroom Two

A good sized double room with dual aspect windows to the front and side.

## Family Bathroom

Fitted with a white suite comprising a panelled bath with a shower over, W.C., wash hand basin, tiled flooring, heated towel rail and splash backs and a window to the side aspect.



### Garage and Parking

A single garage with an up and over door to the front and a parking space directly in front.

### Leasehold Information

Service Charge: £1223.54 which is paid twice a year.

Ground Rent: £270 annually

Lease: The property is held on an 155-year Lease which commenced on February 1st 2005. 134 years remaining.

### Directions

From Banbury town centre proceed in an easterly direction via Bridge Street and in to the Middleton Road. Turn right at the traffic lights into Merton Street then take the second right into Alma Road. Follow the road around to the left then bear right into Fulwell Close where the block will be found on the left hand side.

### Situation

Banbury is conveniently located only 2 miles from junction 11 of the M40 putting Oxford (22 miles), Birmingham (43 miles), London (78 miles) and of course the rest of the motorway network within easy reach. There are regular trains from Banbury to London Marylebone (51 mins) and Birmingham Snow Hill (55mins). Birmingham International airport is 42 miles away for UK, European and New York Flights. Some very attractive countryside surrounds and many places of historical interest are within easy reach.

### Services

All mains' services connected with the exception of gas.

### Local Authority

Cherwell District Council. Tax band B.

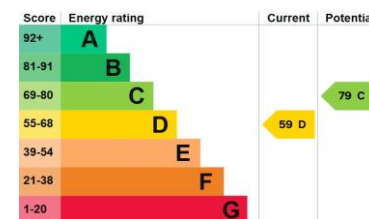
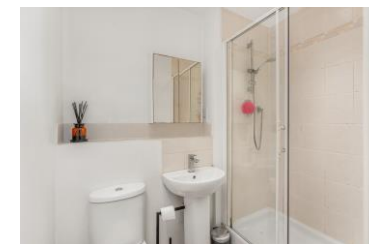
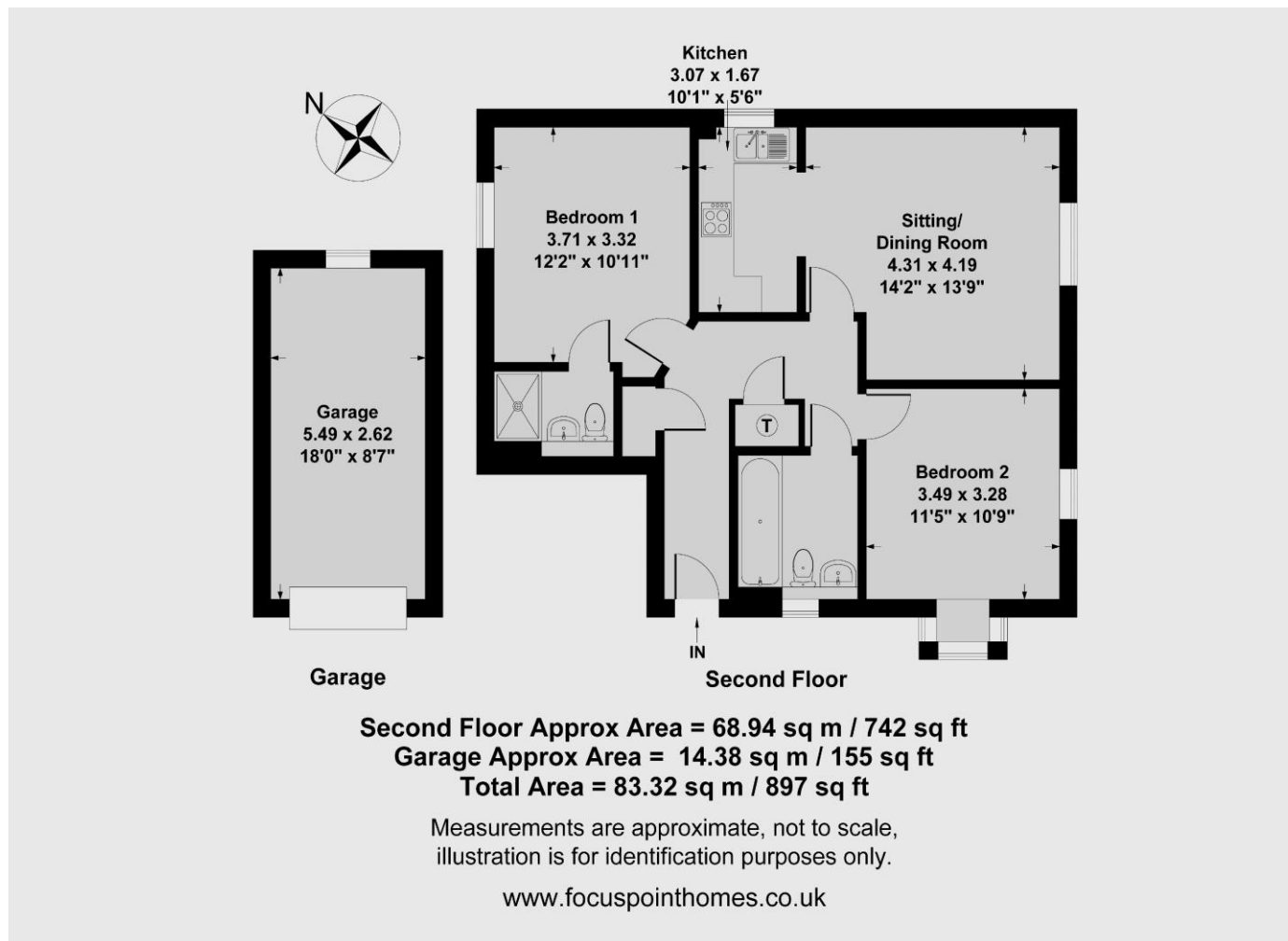
### Viewing Arrangements.

By prior arrangement with Round & Jackson

### Tenure

A leasehold property.





The Office, Oxford Road, Banbury, Oxon, OX16 9XA  
 T: 01295 279953 E: [office@roundandjackson.co.uk](mailto:office@roundandjackson.co.uk)  
[www.roundandjackson.co.uk](http://www.roundandjackson.co.uk)



**ROUND & JACKSON**  
 ESTATE AGENTS

Property Misdescriptions Act 1991: The Agents have not tested any apparatus, equipment, fixtures and fittings, or services, so cannot verify that they are in working order or fit for the purpose. The buyer is advised to obtain verification from his or her professional buyer. References to the Tenure of the property are based on information supplied by the Vendor. The agents have not had sight of the title documents. The buyer is advised to obtain verification from their solicitor. You are advised to check the availability of any property before travelling any distance to view.