



## LANSDOWNE WALK HOLLAND PARK, W11 3LN

£923 PER WEEK

Spacious and beautifully presented, this two-bedroom flat spans over 1,000 sq ft within a newly developed building on Lansdowne Walk. Both bedrooms benefit from direct access to private outdoor space, creating a rare indoor-outdoor feel.

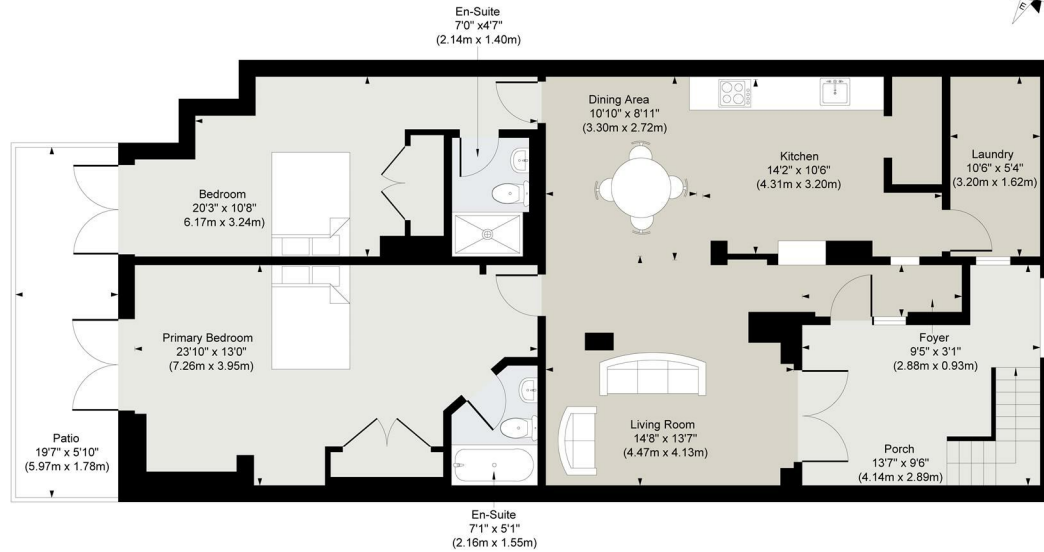
The apartment comprises a generous open-plan kitchen, living and dining area, two large double bedrooms each with stylish en-suite bathrooms, and a separate utility room for added convenience.

Finished in a bright, contemporary style throughout, the property features crisp white interiors that maximise the abundance of natural light. Stone flooring enhances the living areas, while light wood floors bring warmth and comfort to the bedrooms.

Residents also enjoy access to the beautifully maintained communal gardens opposite the building, providing a peaceful green space just moments from the flat.

**SANDERSONS**  
LONDON

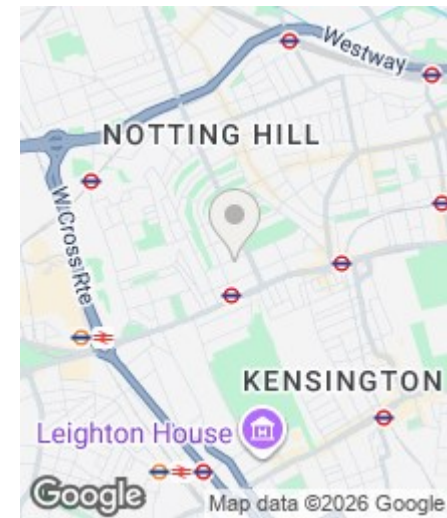
## Lansdowne Walk, London



**TOTAL: 1103 sq. ft, 102.47 m2**  
 EXCLUDED AREAS: Patio: 126 sq. ft, 12 m2, Porch: 148 sq. ft, 14 m2

Produced for Sandersons Residential by Finest Spaces  
[www.finestspaces.co.uk](http://www.finestspaces.co.uk) | © Finest Spaces Studio Ltd

All measurements are approximate. This floor plan is for illustrative purposes only and should not be relied upon for accuracy. Finest Spaces Studio Ltd accepts no liability for errors or omissions. Floor area figures are estimates and not guaranteed.



### Energy Efficiency Rating

	Current	Potential
<i>Very energy efficient - lower running costs</i>		
(92 plus) <b>A</b>		
(81-91) <b>B</b>		
(69-80) <b>C</b>		
(55-68) <b>D</b>		
(39-54) <b>E</b>		
(21-38) <b>F</b>		
(1-20) <b>G</b>		
<i>Not energy efficient - higher running costs</i>		
<b>England &amp; Wales</b>	EU Directive 2002/91/EC	

**EPC Rating: Council Tax Band: D**

Agents Note: Whilst every care has been taken to prepare these particulars, they are for guidance purposes only. All measurements are approximate and are for general guidance purposes only and whilst every care has been taken to ensure their accuracy, they should not be relied upon and potential buyers/tenants are advised to recheck the measurements

108 Holland Park Avenue  
 London  
 W11 4UA

020 7602 6725  
[romana@sandersonslondon.co.uk](mailto:romana@sandersonslondon.co.uk)  
[sandersonslondon.co.uk](http://sandersonslondon.co.uk)

**SANDERSONS**  
 LONDON