



## Bromyard Avenue, W3

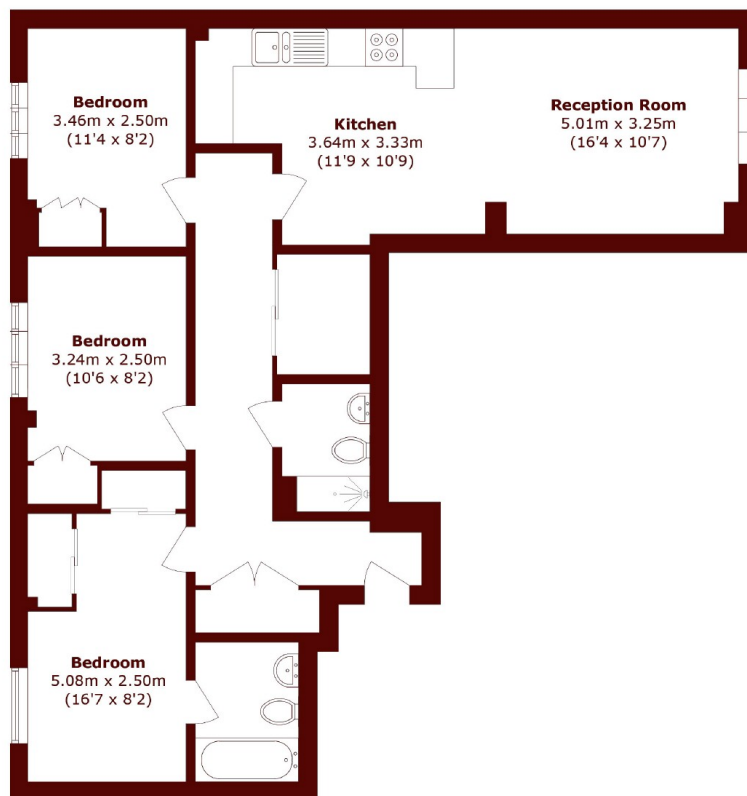
£2,800 pcm



- Three bedrooms
- Two Bathrooms

- Gated Development
- Concierge Service

- Communal Gardens
- Great Location



Total area (approx.): 80.9 sq. m (870.8 sq. ft)

## Marsh & Parsons Askew Road

120 Askew Road, London,  
W12 9BL  
020 8102 0123