



TK International
020 7794 8700
www.t-k.co.uk

Residential Sales
Residential Lettings
Property Management

Sales Office:
9 Heath Street
Hampstead
London NW3 6TP
E: sales@t-k.co.uk

Lettings Office:
16-18 Heath Street
Hampstead
London NW3 6TE
E: lettings@t-k.co.uk

tk.international
TK International
TK International

Est.
1998



Ingham Road West Hampstead NW6

Located on this ever popular road in the heart of West Hampstead is this delightful mid-terrace Victorian four bedroom, two bathroom 1,604 sq ft / 149 sq m house which is offered for sale in very good decorative condition throughout and offers bright family accommodation over three floors with the benefit of a 25' rear garden.

The ground floor offers an entrance hallway which opens up directly into a 25'5x14'9 double reception room, passing an understairs guest WC, internal patio and then through into a generously proportioned and extended 21'8x13'10 kitchen/dining room with sliding glazed doors onto the garden.

The first floor offers a principal bedroom suite with dressing area & en-suite bathroom, as well as another double bedroom and a family bathroom, with the second floor providing two further double bedrooms and extensive eave storage.

All the excellent food shops, cafes, restaurants, gastro-pubs and vibrant community life of West Hampstead is on the doorstep as are the public transport amenities of the Finchley Road and West Hampstead Underground Station (Jubilee Line). There is a huge selection of both state and private schools here and across the Finchley Road in Hampstead.

£1,795,000

JOINT SOLE AGENT

Freehold











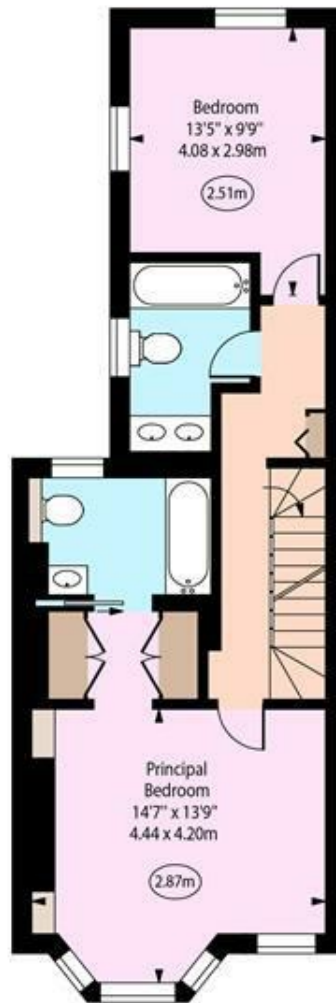
Ingham Road, NW6



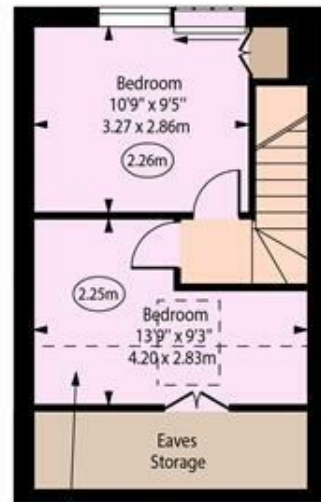
○ - Ceiling Height



Ground Floor



First Floor



Restricted Height Area

Second Floor

Approx Gross Internal Area 1604 Sq Ft - 149.01 Sq M
 Approx. Floor Area Including Restricted Heights 1658 Sq Ft - 154.03 Sq M
 (Including Eaves Storage)

Every attempt has been made to ensure the accuracy of the floor plan shown. However, all measurements, fixtures, fittings, and data shown are approximate interpretations and for illustrative purposes only. Measured according to the RICS. Not To Scale.

www.goldlens.co.uk
 Prepared for TK International
 Ref. No. 031206J