



Vallea Court, Red Bank, Manchester

£875 PCM

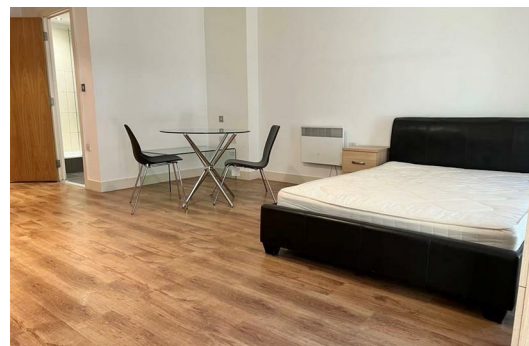
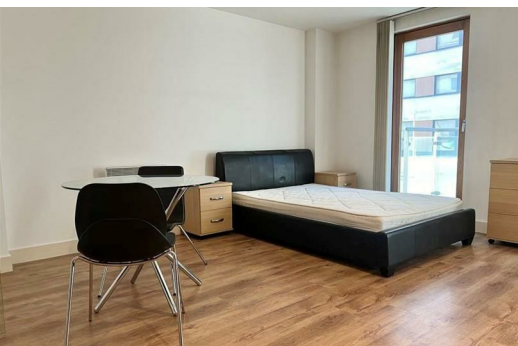
We've got a studio apartment up for grabs in the heart of the Green Quarter - a hugely popular area with several purpose-built developments which are perfect for working professionals who need quick and easy access to the city centre.

Situated in a super-slick development, this apartment is the height of luxury and style. Take a step inside and you'll find an ultra-modern kitchen and bathroom - perfect for today's busy city dweller. In fact, no stone has been left unturned whilst kitting this property out with all the top-notch fixtures and fittings you'd expect from a city centre apartment. You'll also benefit from some cracking views of the communal garden and fountain, with an on-site caretaker too - how great is that?

Here you'll be just a stone's throw from Victoria station, and the main ring road is within easy reach too - so travelling around the city is an absolute breeze. Fancy a spot of shopping? The Ardale centre is just a few minutes away too - you really couldn't be more perfectly placed for both work and play.

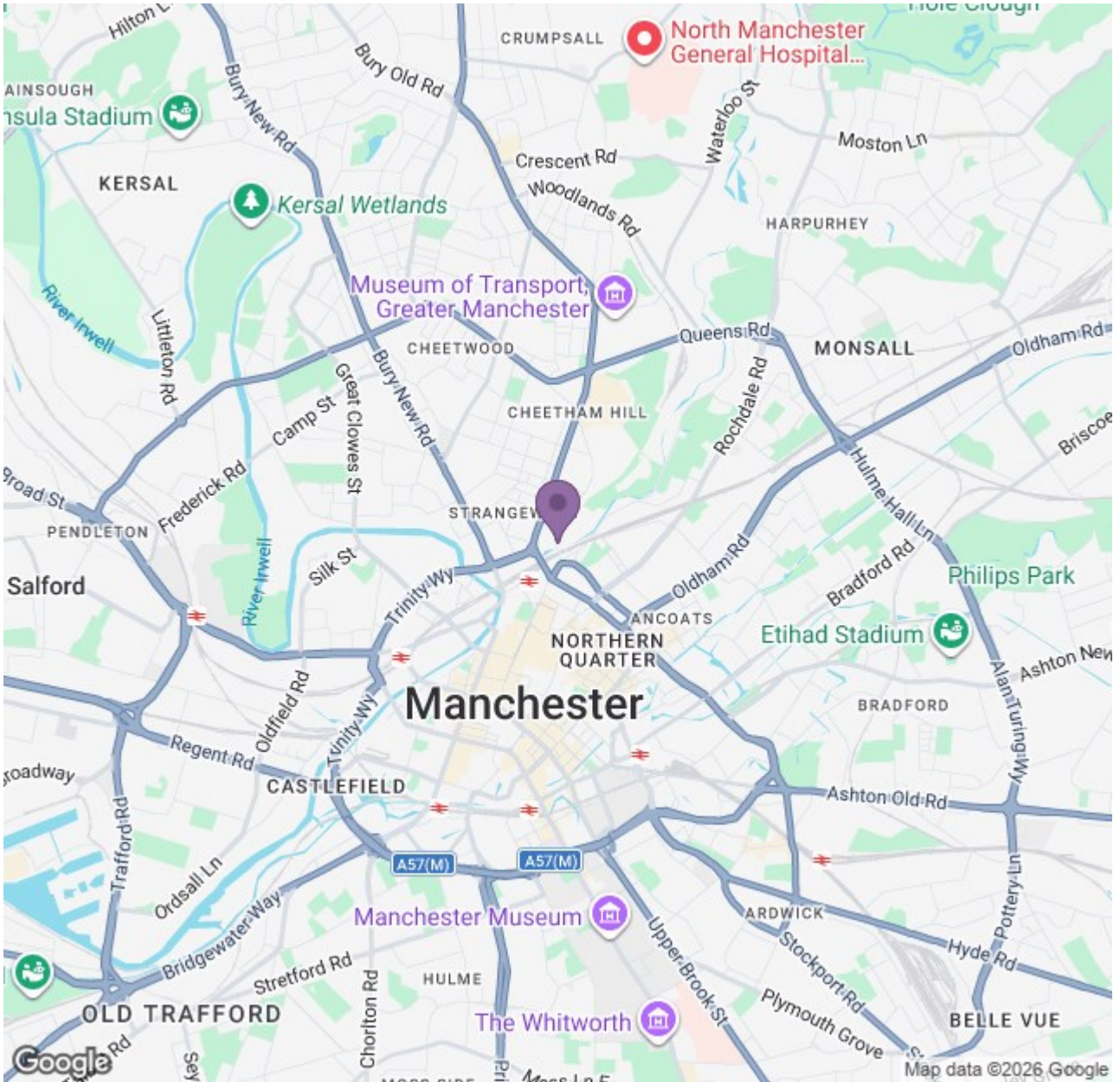
If you're interested in having a closer look, or have any questions, do get in touch. The pictures for this apartment are for marketing purposes only, so the internal fixtures, fittings and furnishings may vary.

Available 31st July 2026



Ascend

Built on higher standards



Energy Efficiency Rating		Environmental Impact (CO ₂) Rating	
Current	Target	Current	Target
78	88	75	76

Ascend

Built on higher standards