



enfields

Enfields Hythe  
14 Green Park  
Enfield - Southgate  
London N6 6AN  
Tel: 020 8084 9210  
enfields@enfields.co.uk

# Elm Crescent, Hythe, SO45

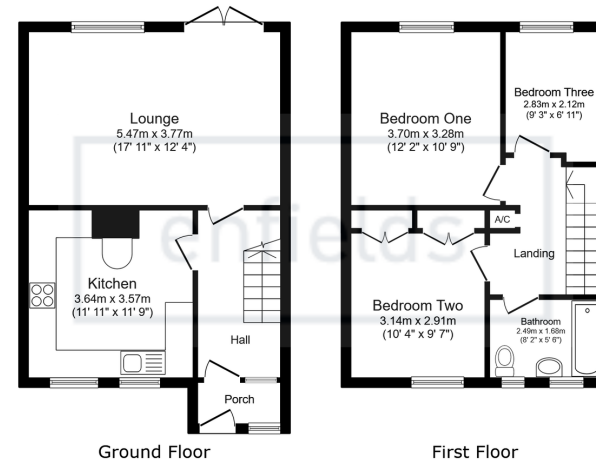
Offers Over £260,000

🛏️ 3 🪑 1 🚗 1



- No onward chain
- Well presented
- Low maintenance rear garden
- White bathroom suite
- Driveway parking
- Three bedrooms
- Modern kitchen
- Close to local bus routes





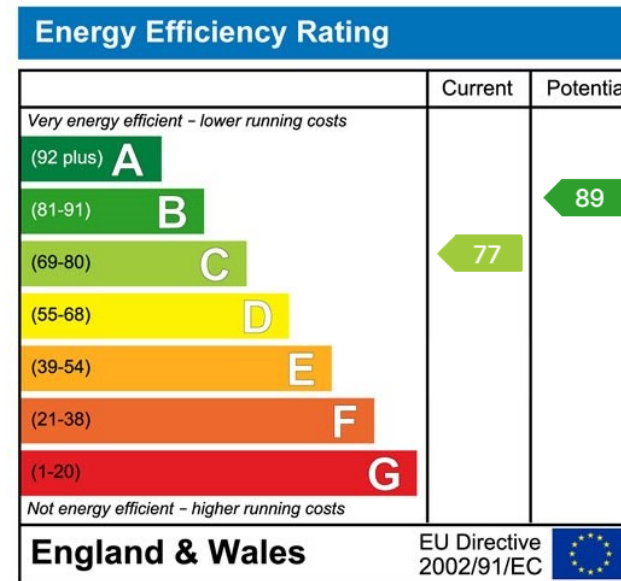
Total floor area: 83.9 sq.m. (904 sq.ft.)

This floor plan is for illustrative purposes only. It is not drawn to scale. Any measurements, floor areas (including any total floor area), openings and orientations are approximate. No details are guaranteed, they cannot be relied upon for any purpose and do not form any part of any agreement. No liability is taken for any error, omission or misstatement. A party must rely upon its own inspection(s). Powered by www.Propertybox.io



## NO FORWARD CHAIN

Enfields are pleased to offer to the market this well-presented three-bedroom mid-terraced home with driveway parking and a low-maintenance enclosed rear garden. Features include a modern kitchen with integrated hob, extractor fan and dishwasher, contemporary bathroom, gas central heating, and UPVC double glazing. Conveniently located close to local amenities and bus routes.



[www.enfields-southampton.co.uk](http://www.enfields-southampton.co.uk)



It is Enfields policy to respect any sole agency currently in force and we would not be able to commence marketing until this has expired or been terminated. If you fail to terminate any previous agreement you could be liable for two sets of fees. Enfields Hythe is a trading name of YTF LTD Registered office: 345 Shirley Road, Southampton, Hampshire, England, SO15 3JD. Company Registration No: 10459987. VAT Registration No: 281 2975 81.

Enfields Lettings - Embley Management LTD T/A Enfields. Registered Address: 345 Shirley Road, Southampton, Hampshire, England, SO15 3JD. Company Registration No: 14847604. VAT Registration No: 439 8546 45.