

linkagency



The Old Sidings, St Johns Court, Goole, East Yorkshire, DN14 6FS

£750 Per Month



68 The Old Sidings, St Johns Court

DN14 6FS, Goole

- Allocated car parking
- High quality kitchen & bathroom
- Finished to a high standard
- CCTV
- Communal garden

Spacious two bedroom apartment, in a new development, tucked into a quiet corner, close to the centre of Goole. Built with the future in mind down to every detail. Insulated throughout to standards beyond minimal requirement. Wild flower garden can be enjoyed by all occupants and has outdoor furniture as well as diving trellis to allow privacy. Occupants benefit from the added security of CCTV. Gas central heating.

The property briefly comprises; entrance hall with storage cupboards, open-plan lounge and kitchen with high gloss units, integrated oven, gas hob and extractor plus space for white goods, two good size bedrooms and modern bathroom with wash basin, WC and bath with overhead shower.

The development has allocated parking bays for residents.

A holding deposit of £173.00 is payable on application.



Location and EPC Graph



Energy Efficiency Rating

	Current	Potential
Very energy efficient - lower running costs		
(92 plus) A		
(81-91) B	84	84
(69-80) C		
(55-68) D		
(39-54) E		
(21-38) F		
(1-20) G		
Not energy efficient - higher running costs		
England & Wales	EU Directive 2002/91/EC	



Extra Info

Council tax band: A

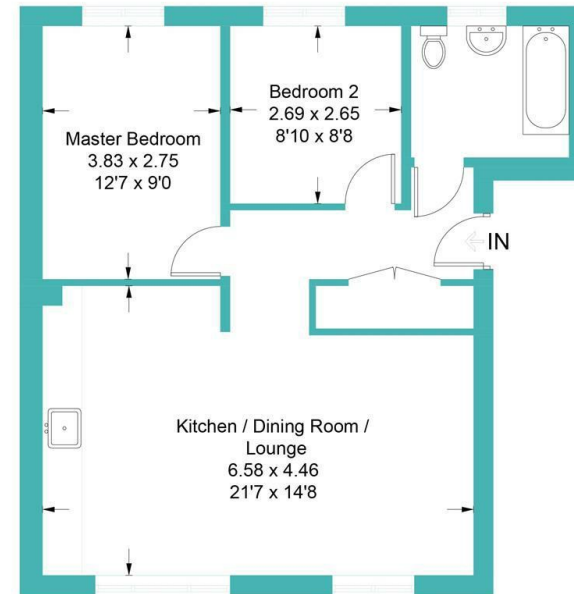
To arrange a viewing please register your interest on our website via the tenancy application.

For additional information please contact our office on 01405 768401 or email: enquiries@linkagency.co.uk

Floorplan



Approximate Gross Internal Area = 57.7 sq m / 621 sq ft



First Floor

Illustration for identification purposes only, measurements are approximate, not to scale.

