

Great Peter Street, SW1P

£1,384 Per week

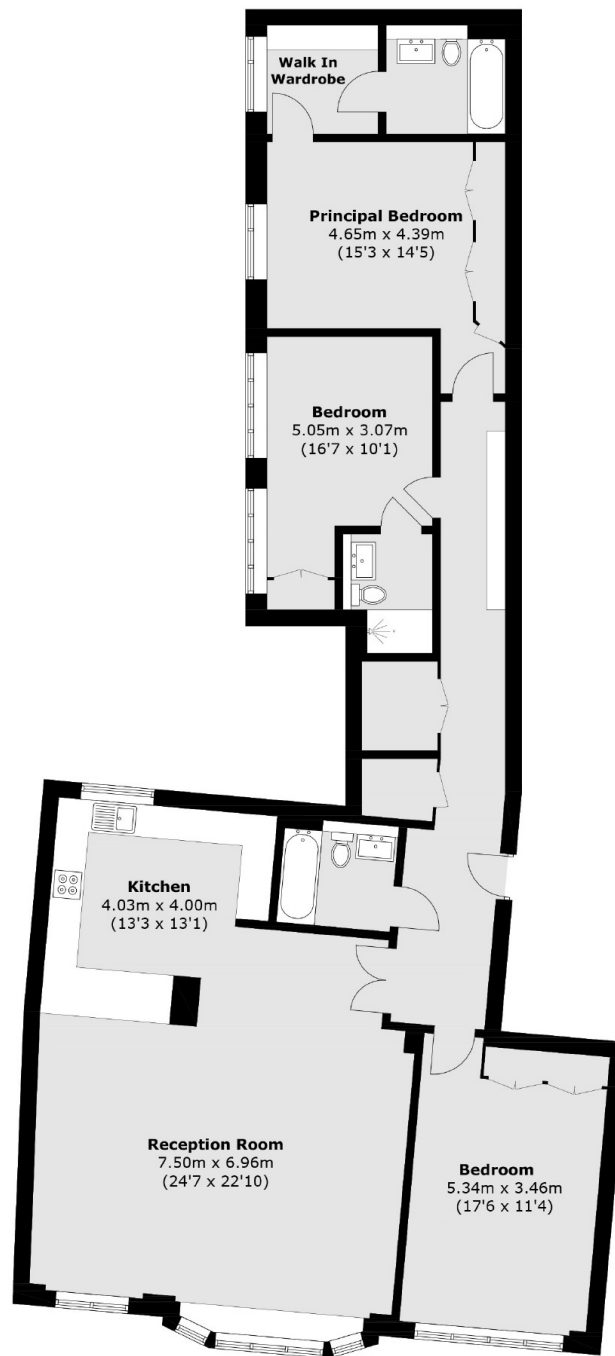
An Impressive modern three bedroom apartment featuring a sleek, stylish design and generous proportions with three bathrooms two of which are En-Suite.

Great Peter Street is ideally located some of London's most iconic landmarks and is within reach of the many amenities, restaurants and shops of Victoria, Westminster and St James.

Features

- Open Plan Kitchen
- Wood Floors
- Two En- Suites
- Lift Access
- Walk In Wardrobe
- Plenty Of Storage

Great Peter Street,
London, SW1P



First Floor

Total area (approx.): 146.1 sq. m (1,572.6 sq. ft)