



## Welbeck Street, W1G

**£850** Per week

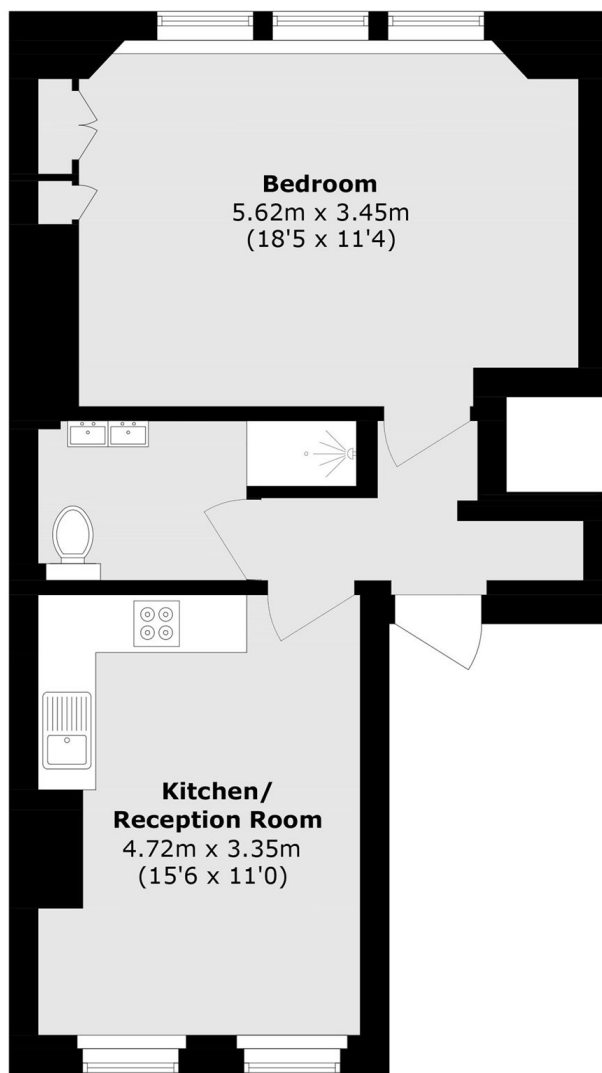
A good sized one bedroom apartment on the second floor of a Georgian conversion in the heart of Marylebone. The property has a kitchen/reception room, double bedroom with built-in wardrobes and a bathroom.

Welbeck Street is in the heart of Marylebone Village and a short walk from the open spaces of Regent's Park. The property has easy access to lots of transport links from Bond Street, Baker Street, Marylebone, Regent's Park and Great Portland Street, all close by.

### Features

Marylebone Village  
Second Floor W/Lift  
Air Conditioning  
One Bedroom  
One Bathroom  
Kitchen/Reception

# Welbeck Street, London, W1G



## First Floor

Total area (approx.): 46.6 sq. m (501.6 sq. ft)