



SUTHERLAND STREET
PIMLICO

JACKSON-STOPS 

SUTHERLAND STREET, PIMLICO, SW1V

ASKING PRICE: £625 PER WEEK

A meticulously designed double bedroom flat located on the first floor of this beautiful period building in Pimlico.

The flat has been finished to the highest standard throughout with great attention to detail, it boasts a bright living room, modern bathroom, good storage and a double bedroom with mezzanine level.

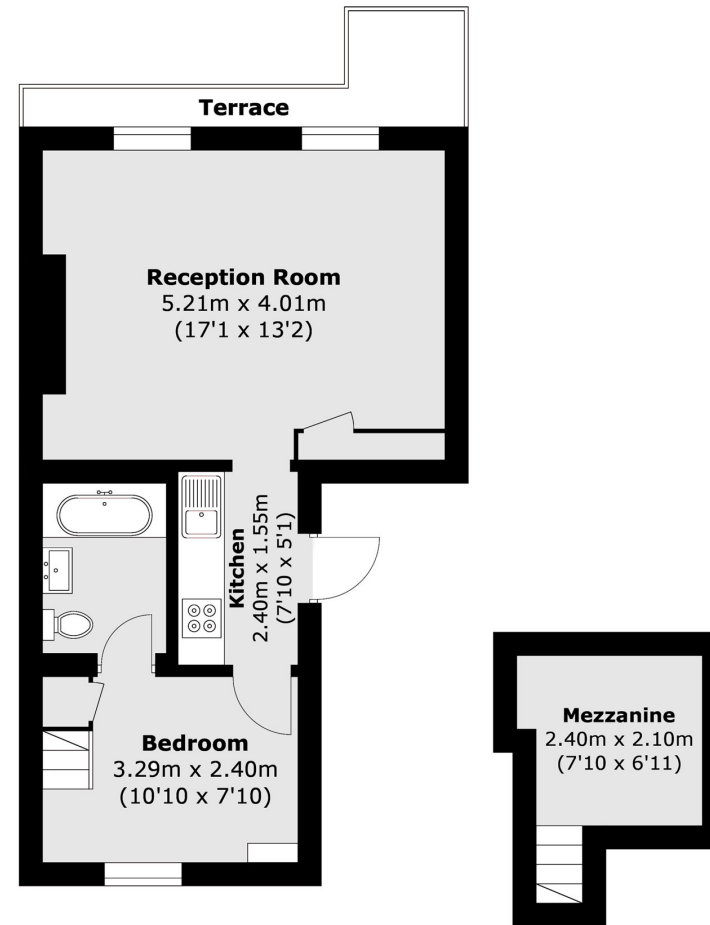
It is complemented by a private balcony, an abundance of natural light and a separate utility cupboard.

Located in the Pimlico Grid just 0.5 miles to Victoria train and bus station (Circle, District & Victoria tube Lines and National Rail) and Pimlico (Victoria line) underground station.

KEY FEATURES

- Beautiful Finish Throughout
- First Floor
- Natural Light
- Modern Bathroom
- Balcony
- Tax Band: E

Energy Rating: C. We aim to make our particulars both accurate and reliable. However they are not guaranteed; nor do they form part of an offer or contract. If you require clarification on any points then please contact us, especially if you are travelling some distance to view. Please note that appliances and heating systems have not been tested and therefore no warranties can be given as to their good working order.



First Floor

Mezzanine

Total area (approx.): 43.7 sq. m (470.4 sq. ft)
Terrace : 4.3 sq. m (46.3 sq. ft)

ASKING PRICE: £625 PER WEEK

PIMLICO

020 7828 4243

pimlicolettings@jackson-stops.com

jackson-stops.co.uk

JACKSON-STOPS 