

Hillside Road

ST GEORGE

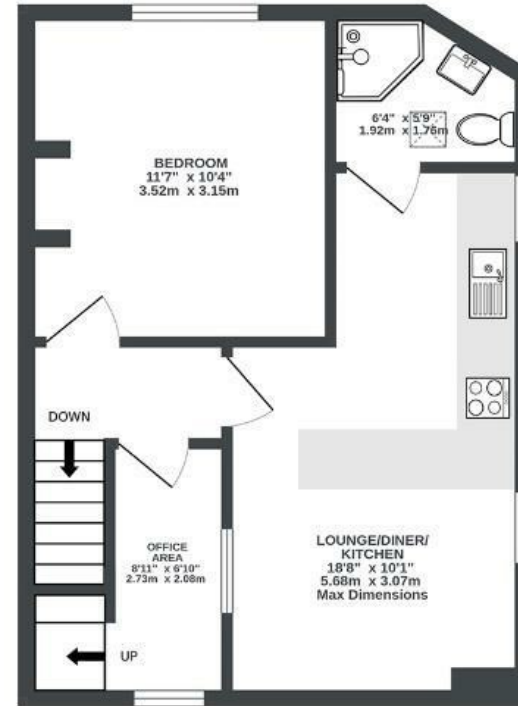
APPROXIMATE FLOOR AREA
58 SQM / 624 SQFT



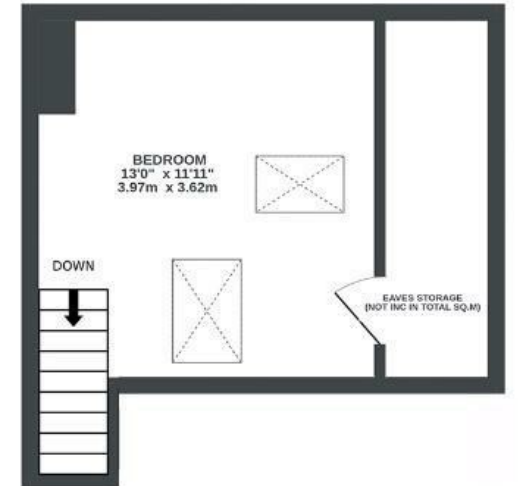
GROUND FLOOR
59 sq ft. (5.5 sqm.) approx.



1ST FLOOR
400 sq ft. (37.2 sqm.) approx.



2ND FLOOR
355 sq ft. (32.7 sqm.) approx.



Illustrations are for reference purposes only, measurements are approximate, not to scale.

Boardwalk

Hillside Road

ST GEORGE, BRISTOL



£250,000



2 Bedrooms



BS5 7PB



1 Bathrooms

"We have loved our life in this brilliant space. Starting mornings chilled with coffee as the light streams into our kitchen, before wandering over Troopers Hill and down to the river. Finishing our days having an evening drink in our sun-trap garden, watching balloons float by. With so many layers and spaces, we have felt truly lucky to have this spacious, modern sanctuary."

