



Lime Grove Gardens,

Price £675,000

FOR SALE

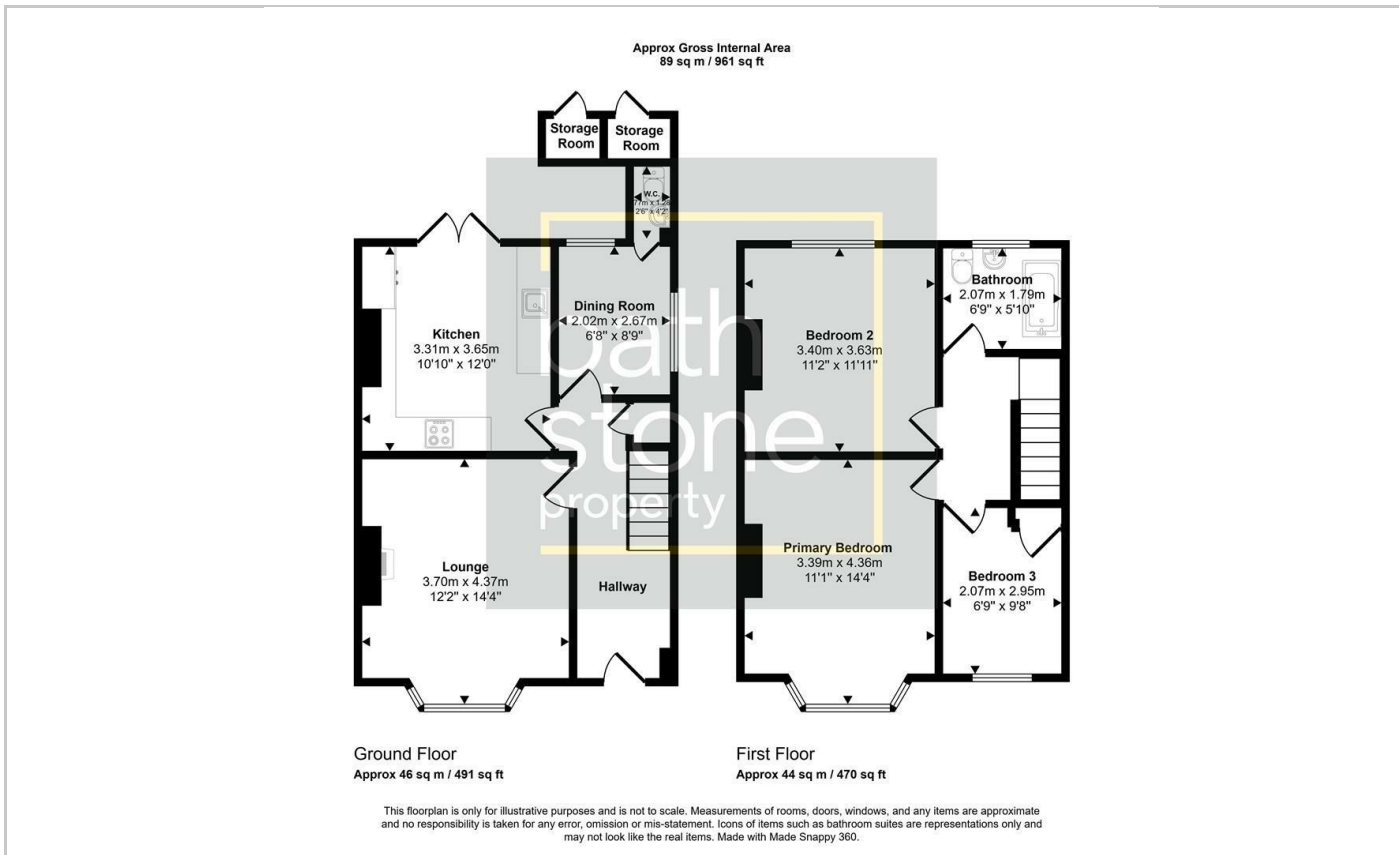


- Central
- Three Bedrooms
- Spacious
- End-Terrace
- Light and Airy
- Good Size Garden

THE PROPERTY

Vendors Comments: We have loved every minute of living on Lime Grove Gardens, which has felt like the perfect location that really covers all bases, from a 5-minute walk in one direction into the centre of Bath and being seated in a restaurant or cocktail bar, to taking a stroll up into the rolling hills of the skyline walk with the dog, or walking the beautiful canal paths. For being so centrally located, the area is peaceful, with an unusually large garden, both front and back. The area also feels really tight knit, with friendly neighbours helping to really build a sense of community. The property also benefits from having access to highly regarded schools such as the Widcombe Church of England Junior School, and also only a 10-minute walk to Bath Spa train station. We will miss living in this wonderful area and would very much like to return in the future.

This stunning three-bedroom period property has been beautifully renovated throughout, offering a stylish blend of contemporary living and classic Bath charm. Situated in a quiet and sought-after residential area just a short walk from Bath city centre.



Energy Efficiency Rating		Current	Potential
Very energy efficient - lower running costs			
(92 plus)	A		100+
(81-91)	B		
(69-80)	C		
(55-68)	D	72	
(39-54)	E		
(21-38)	F		
(1-20)	G		
Not energy efficient - higher running costs			
England & Wales		EU Directive 2002/91/EC	