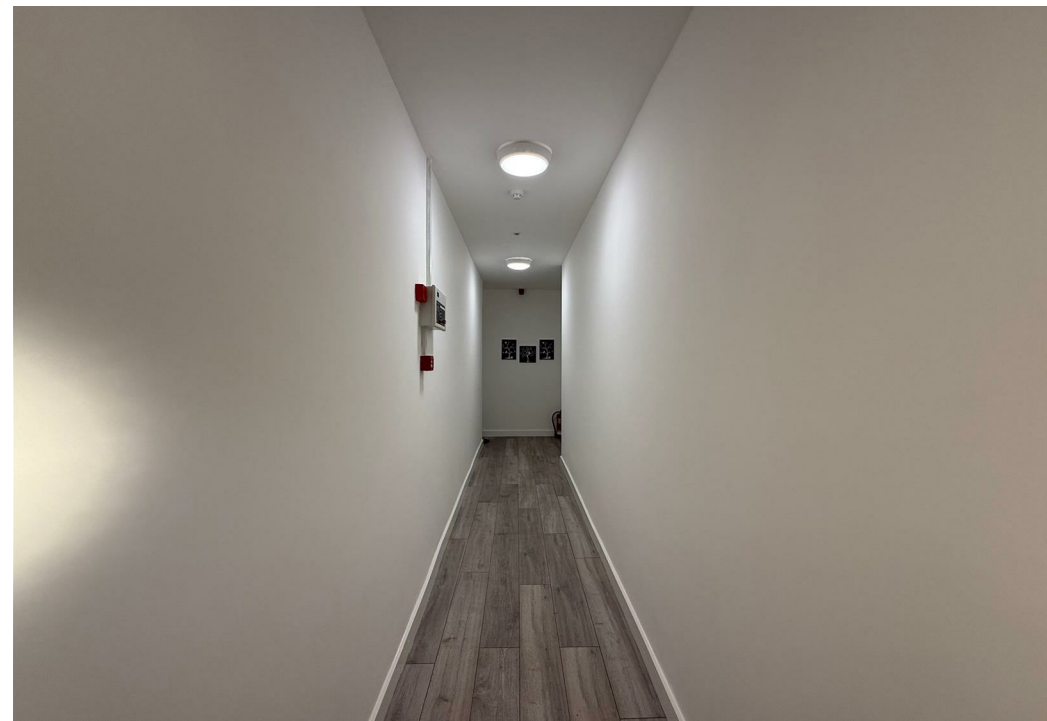
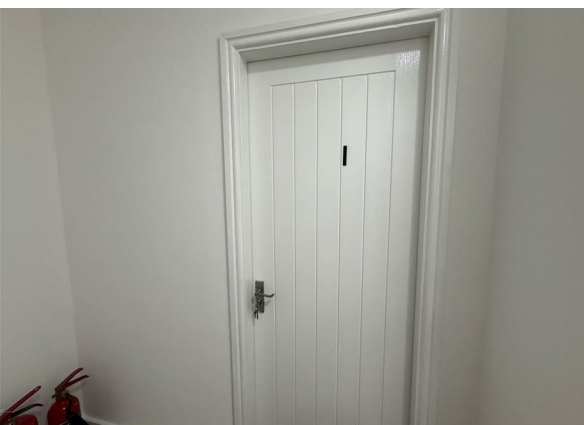
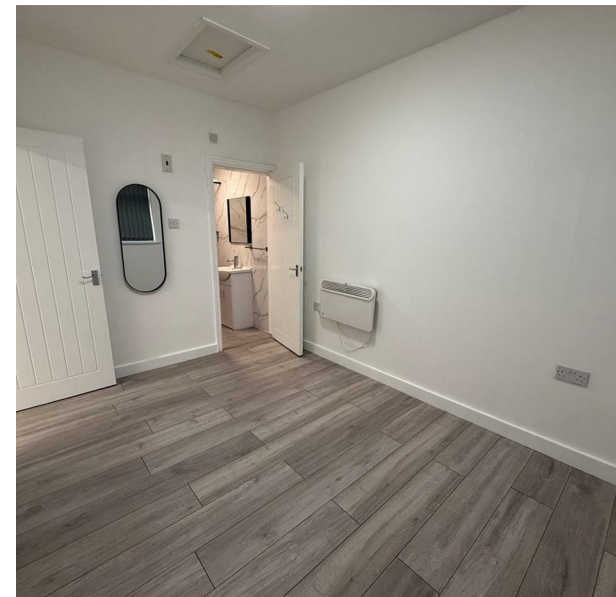
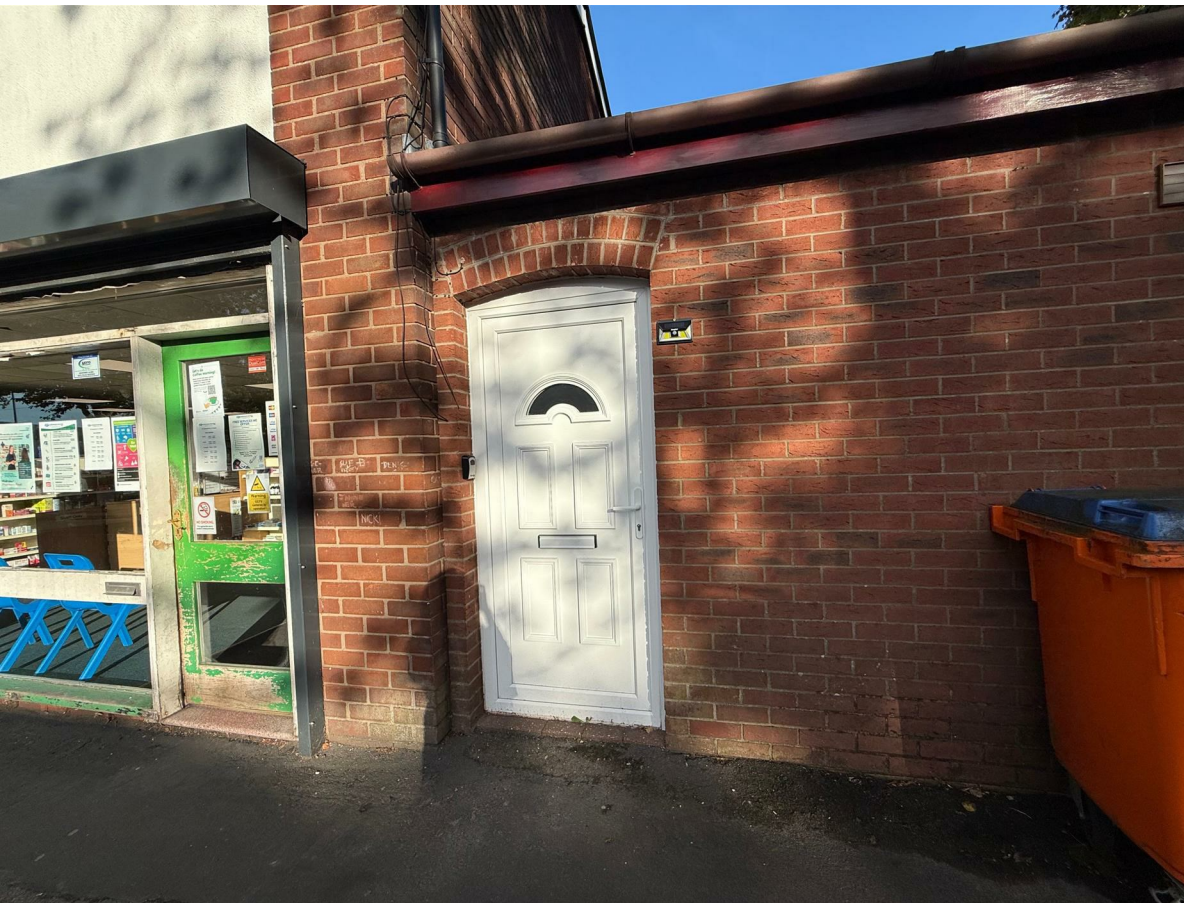


**Flat 1, Ince Green Lane, Ince, Wigan, WN2 2AR**

**£750 Per Month**

**Council Tax Band:**



\*\*\* 1-BEDROOM UNFURNISHED NEW FLAT TO LET IN WIGAN\*\*\*

- NEW BUILD
- UNFURNISHED
- 1 BEDROOM, BATHROOM AND RECEPTION WITH OPEN KITCHEN
- PRIVATE GARDEN
- RENT £750
- DEPOSIT £750

Nestled in the heart of Ince, Wigan, this modern flat on Lord Street offers a perfect blend of comfort and contemporary living. Built in 2025, the property boasts a fresh and inviting atmosphere, ideal for those seeking a stylish home.

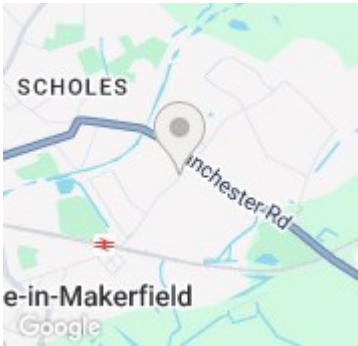
The flat features a well-proportioned reception room, providing a versatile space for relaxation or entertaining guests. The single bedroom is designed to be a tranquil retreat, ensuring a peaceful night’s sleep. The bathroom is fitted with modern fixtures, catering to all your daily needs with ease.

This property is perfect for individuals or couples looking for a low-maintenance lifestyle in a vibrant community. With its prime location, residents will enjoy easy access to local amenities, including shops, parks, and transport links, making it an excellent choice for both work and leisure.

Whether you are a first-time buyer or seeking a rental opportunity, this flat presents a fantastic chance to secure a modern living space in a desirable area. Don’t miss out on the opportunity to make this contemporary flat your new home and contact us today.



Open House South East Manchester



Energy Efficiency Rating		
	Current	Potential
Very energy efficient - lower running costs		
(92 plus) A		
(81-91) B		
(69-80) C		
(55-68) D		
(39-54) E		
(21-38) F		
(1-20) G		
Not energy efficient - higher running costs		
England & Wales	EU Directive 2002/91/EC	