



jordan fishwick

CHESHIRE
Silverbirch Close



Silverbirch Close, Cheshire, M33 4JR

£2,250 PCM



The Property

*** AVAILABLE NOW *** Silverbirch Close, Sale

Jordan Fishwick are delighted to bring to the rental market this spacious and well presented four bedroom, detached family home which has recently undergone refurbishments such as painting, replacement flooring and carpets. In brief the property comprises; entrance hallway with doors to; WC, lounge, fitted kitchen with appliances, second reception room/dining room which has access to conservatory with double french doors leading into rear garden. To the first floor there are four bedrooms, family bathroom with three piece suite, with the Master bedroom benefitting from an en-suite. Externally the property has off road parking and gardens to front and rear which are mainly laid to lawn with shrubs and beds. The property also benefits from off road parking, gas central heating, double glazing, a section of storage to the garage and is only a short distance to local shops and amenities. Offered on an unfurnished basis. Call now to view - 0161 976 5080

Directions

M33 4JR



- DETACHED
- FOUR BEDROOMS
- TWO BATHROOMS
- UNFURNISHED
- OFF ROAD PARKING
- COUNCIL TAX BAND F
- EPC RATING - C

Postcode - M33 4JR

EPC Rating - C

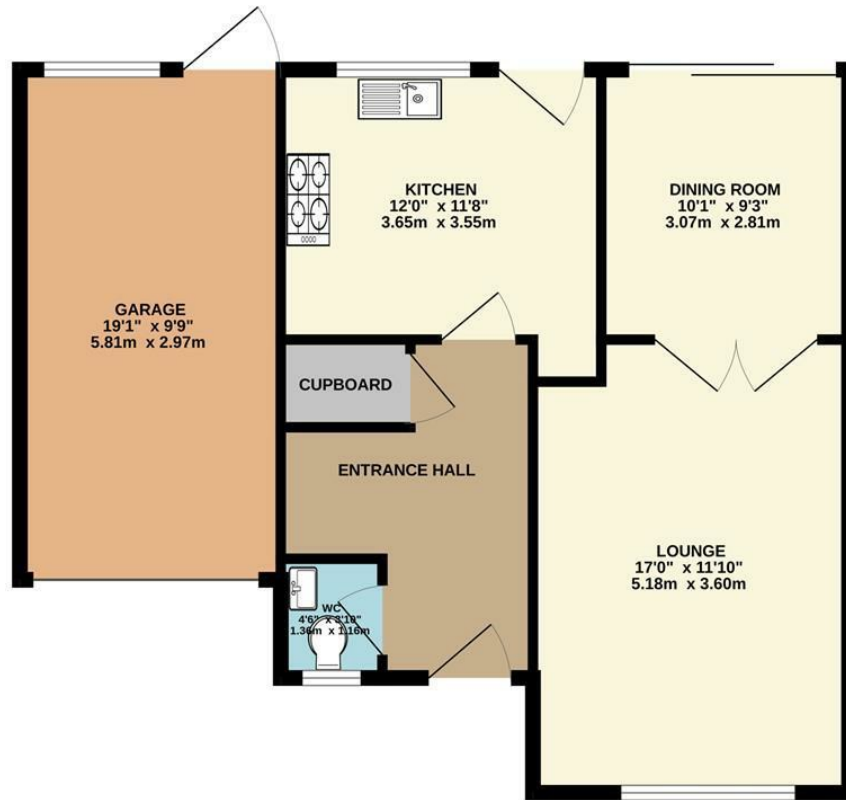
Floor Area - sq ft

Local Authority - Trafford Borough Council -
House Moving

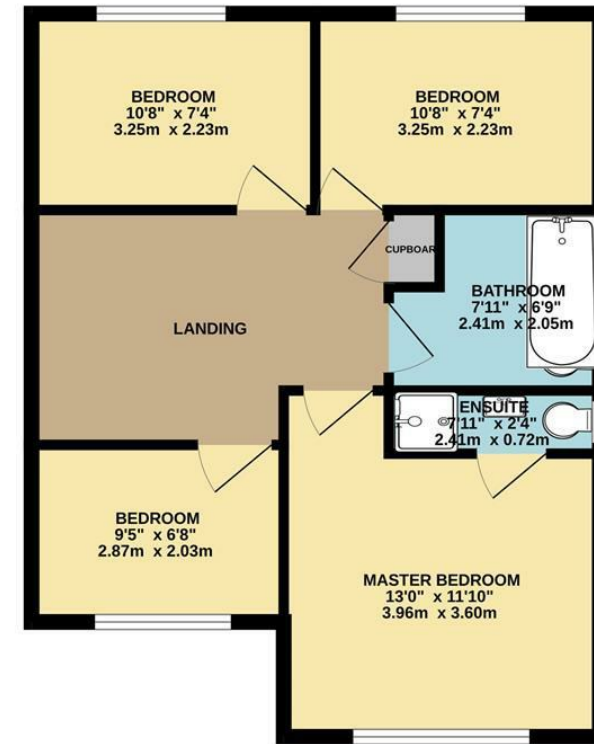
Council Tax - F



GROUND FLOOR
722 sq.ft. (67.1 sq.m.) approx.



1ST FLOOR
536 sq.ft. (49.8 sq.m.) approx.



TOTAL FLOOR AREA : 1258 sq.ft. (116.9 sq.m.) approx.

Measurements are approximate. Not to scale. Illustrative purposes only
Made with Metropix ©2026



These particulars are believed to be accurate but they are not guaranteed and do not form a contract. Neither Jordan Fishwick nor the vendor or lessor accept any responsibility in respect of these particulars, which are not intended to be statements or representations of fact and any intending purchaser or lessee must satisfy himself by inspection or otherwise as to the correctness of each of the statements contained in these particulars. Any floorplans on this brochure are for illustrative purposes only and are not necessarily to scale.

Offices at: Chorlton, Didsbury, Disley, Hale, Glossop, Macclesfield, Manchester Deansgate, Manchester Whitworth Street, New Mills, Sale, Wilmslow and Withington

01619291994

halemanagement@jordanfishwick.co.uk

www.jordanfishwick.co.uk