



Andrew Burn
Property
exp

Jason Kates FNAEA
22 Orchard Court,
The Avenue,
Worcester Park,
Surry KT4 7LD
07824 532 168

Brier Lea, Lower Kingswood, Tadworth, KT20 6TR

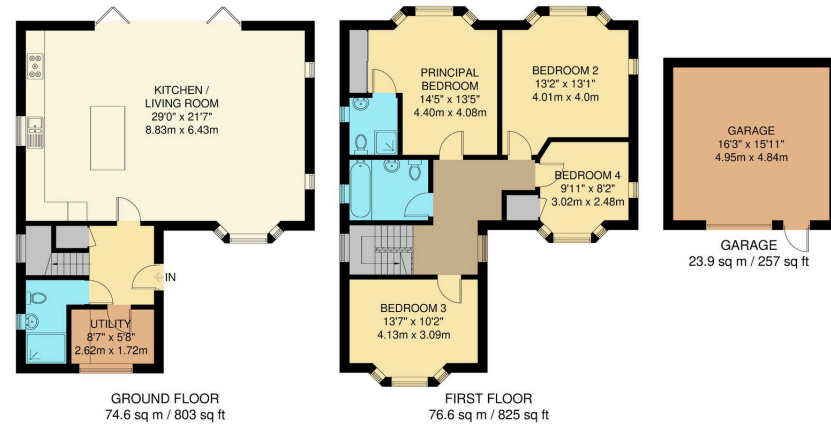
Offers Over £835,000

🛏️ 4 🚿 3 🚗 1



- Ref: JK0700
- Electric gated entrance providing privacy and security
- Separate utility room
- Contemporary family bathroom serving the remaining bedrooms
- Detached garage and ample off-street parking
- Four-bedroom detached family home
- Stunning open-plan kitchen/living space with bi-fold doors opening onto the garden
- Master bedroom with en-suite shower room
- Private low maintenance rear garden with patio area
- Quiet and desirable Lower Kingswood location

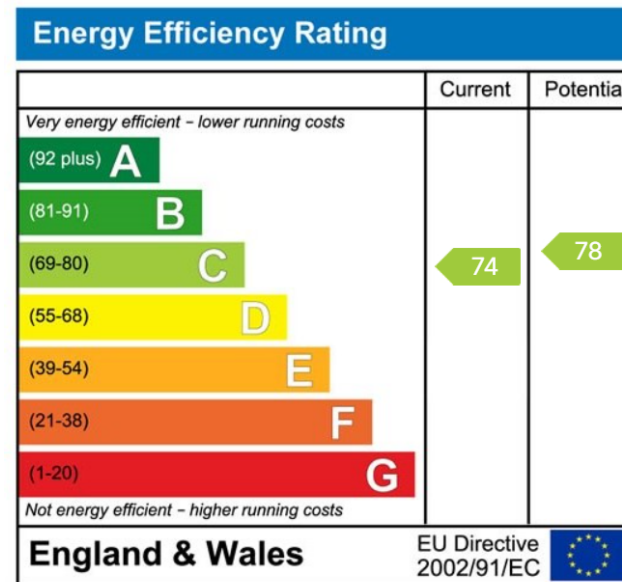




TOTAL FLOOR AREA = 151.2 sq m / 1628 sq ft (Approx)
 GARAGE = 23.9 sq m / 257 sq ft (Approx)
 TOTAL = 175.1 sq m / 1885 sq ft (Approx)

Whilst every attempt has been made to ensure the accuracy of the floorplan contained here, measurements of doors, windows, rooms and any other items are approximate and no responsibility is taken for any error omission or mis-statement. This plan is for illustrative purposes only and should be used as such by any prospective purchaser. The services, systems and appliances shown have not been tested and no guarantee as to their operability or efficiency can be given.

Ref: JK0700. A beautifully presented four-bedroom detached family home set behind electric gates, offering a stunning open-plan kitchen/living space, principal bedroom with en-suite, private rear garden, and ample off-street parking, all within a sought-after Lower Kingswood location.



jason@andrewburnproperty.co.uk

andrewburnproperty.co.uk

Jason Harvey Kates

[jason_kates_at_exp](https://www.instagram.com/jason_kates_at_exp)