



Springfield Avenue, SW20

£895,000

This terraced house features four bedrooms and two bathrooms, and has been extended into the loft and the rear. It is presented in excellent condition throughout, with beautiful views over playing fields and is offered with no forward chain.

Springfield Avenue is a quiet residential street, equidistant to both Wimbledon Chase and South Merton train stations. It is within the catchment area for Rutlish School.

Features

- Four Bedrooms
- Two Bathrooms
- Utility Room
- Off Street Parking
- Excellent Condition
- No Onward Chain



Springfield Avenue, SW20

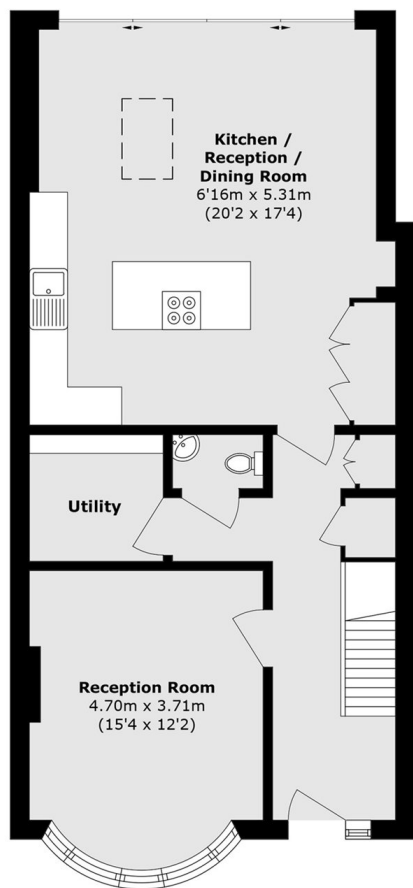
The house has a bay-fronted reception room at the front with a working fireplace. The rear of the house offers a light and spacious open-plan kitchen/dining/reception room. The kitchen has integrated appliances and sliding doors leading to the rear garden.

The first floor has two generous double bedrooms with built-in wardrobes and a single bedroom at the front. There is also a four-piece family bathroom to the rear. The loft has been converted to create a spacious principal bedroom with built-in wardrobes and en-suite.

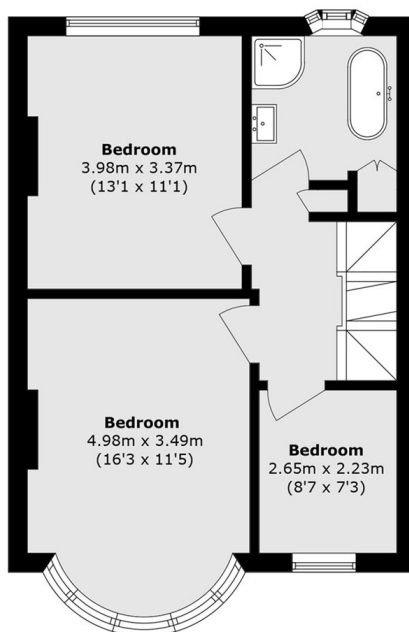
The rear garden includes a decked seating area, perfect for entertaining, a sizeable lawn, and a large multipurpose studio with running water, a shower room, and electricity.



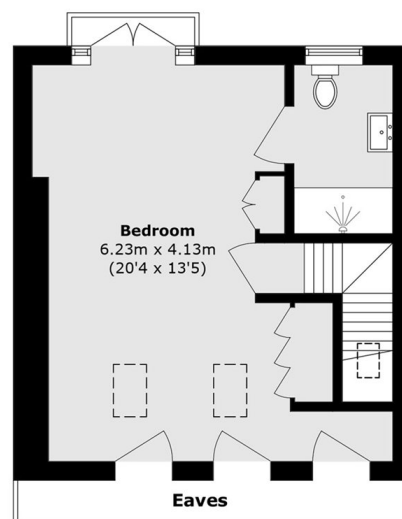
Springfield Avenue, London, SW20



Ground Floor



First Floor



Second Floor

Total area (approx.): 156.5 sq. m (1684.6 sq. ft)
(Excluding Eaves)