



**Constables**  
SALES & LETTINGS

Meadow Close , Neston

£1,300 Per Month

A mid-terraced property located in a quiet cul-de-sac in Neston. The accommodation is furnished or unfurnished and comprises; lounge-dining room, kitchen, 3 double bedrooms (one on the ground floor) and 1 single bedroom and bathroom. The property has off road parking and rear garden.





# Constables

SALES & LETTINGS

- MID TOWNHOUSE
- LOUNGE-DINING ROOM
- FURNISHED/UNFURNISHED
- CUL-DE-SAC LOCATION
- OFF ROAD PARKING
- VIEWINGS AVAILABLE NOW
- 3 FIRST FLOOR BEDROOM AND A GROUND FLOOR 4TH BEDROOM
- REAR GARDEN

**Hallway**

**Lounge-Dining Room**

**Kitchen**

**Ground Floor Bedroom 4**

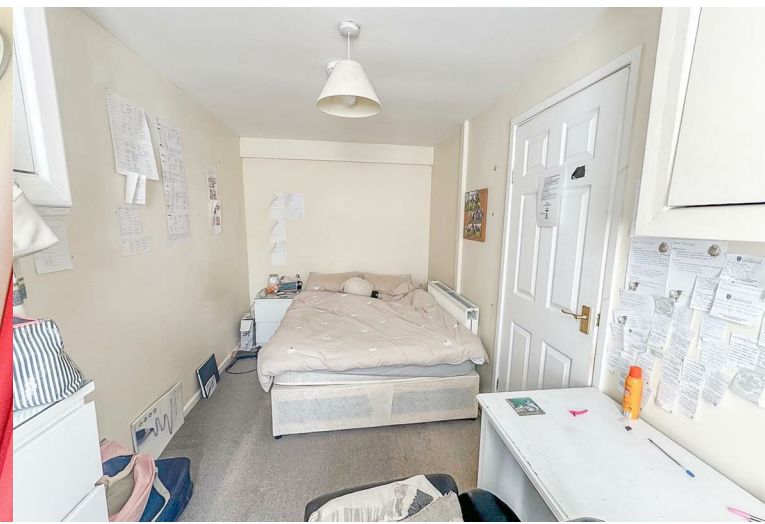
**Landing**

**Bedroom 1**

**Bedroom 2**

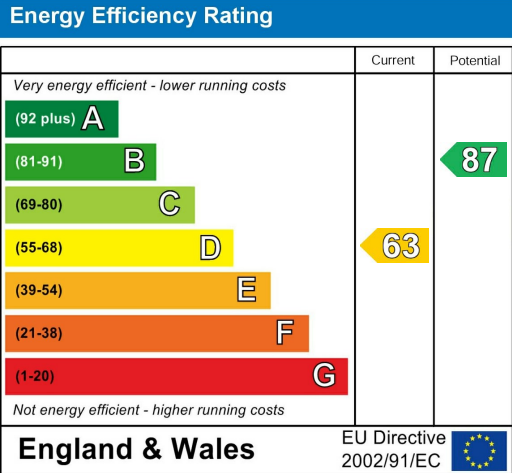
**Bedroom 3**

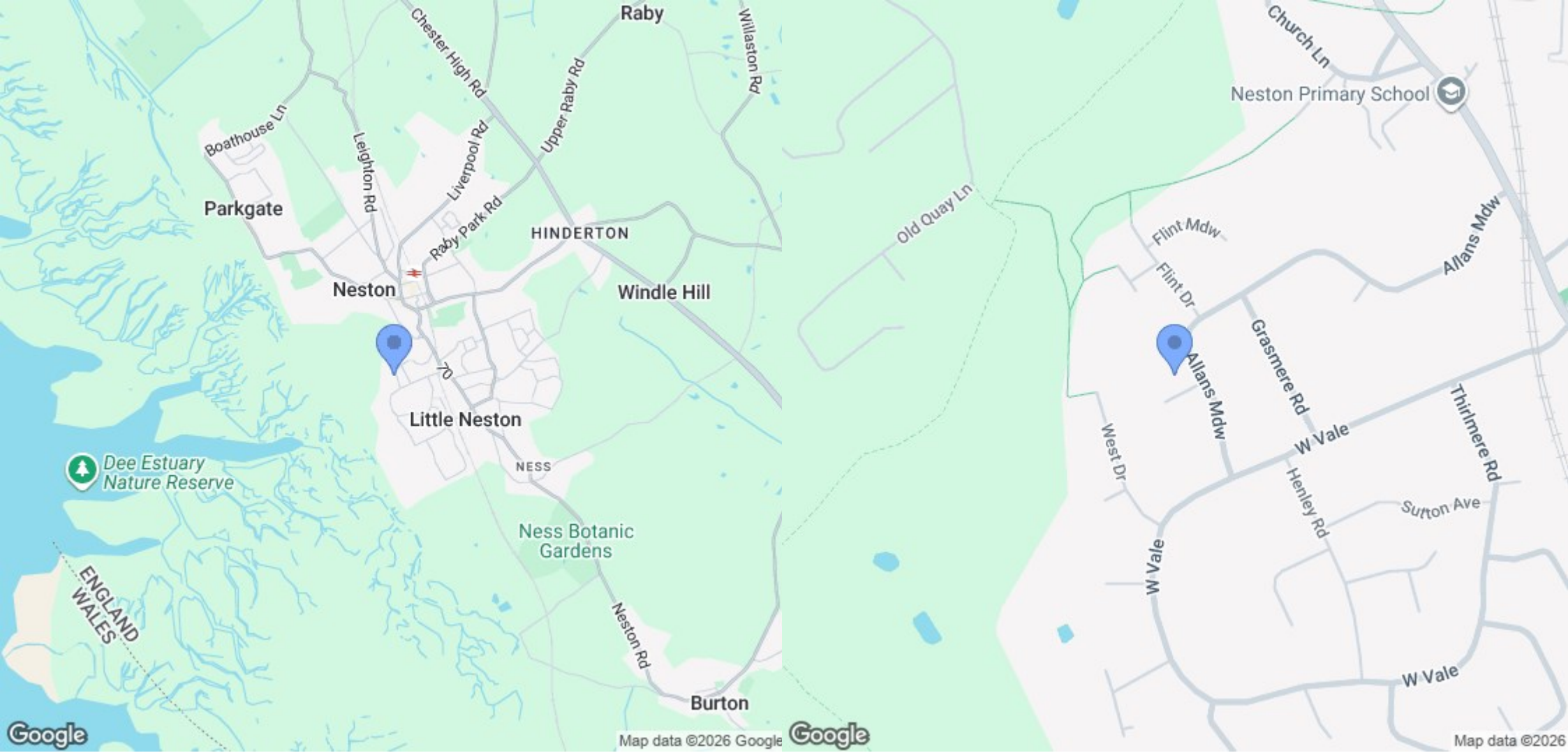
**Bathroom**





# EPC & Floor Plan





Location Map

# Constables

S A L E S   &   L E T T I N G S

21 High Street, Neston

South Wirral, Neston, Cheshire

[www.constablesestateagents.co.uk](http://www.constablesestateagents.co.uk)

[info@constablesestateagents.co.uk](mailto:info@constablesestateagents.co.uk)

0151 353 1333