



Asking Price £425,000 | House - Terraced | Freehold

- Three Bedroom
- Downstairs cloakroom
- Good size lounge
- Garage in block
- ideal family home
- Mid terrace
- Kitchen with space for a table
- Good size rear garden
- Ideal investment
- No onward chain

020 8892 1313



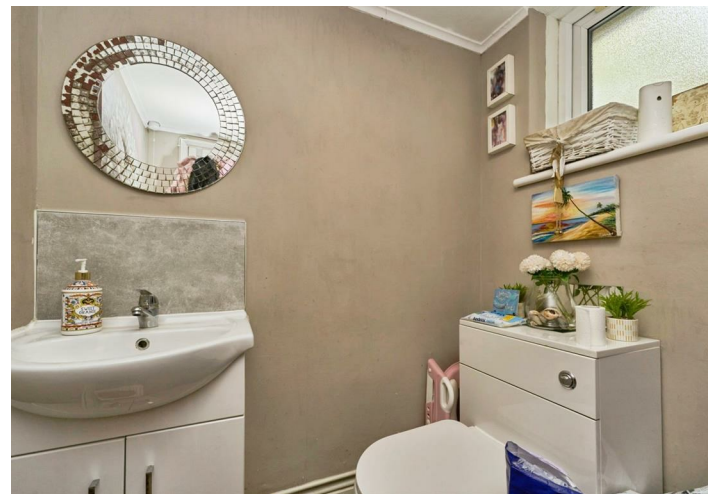
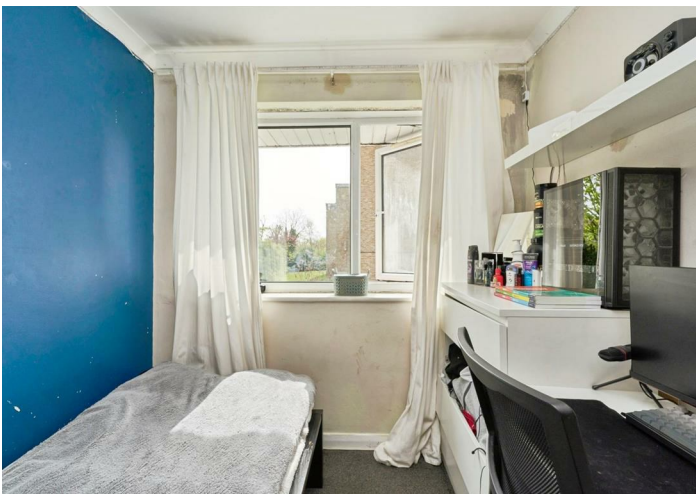
Stourton Avenue, Feltham, TW13 6LE

Milestone and Collis are pleased to offer this home in Stourton Avenue, Feltham, this charming three-bedroom mid-terrace family home offers an ideal blend of comfort and convenience. Situated in a peaceful cul-de-sac, the property boasts a welcoming reception room, a well-appointed kitchen, and a separate downstairs cloakroom a family bathroom, making it perfect for a growing family.

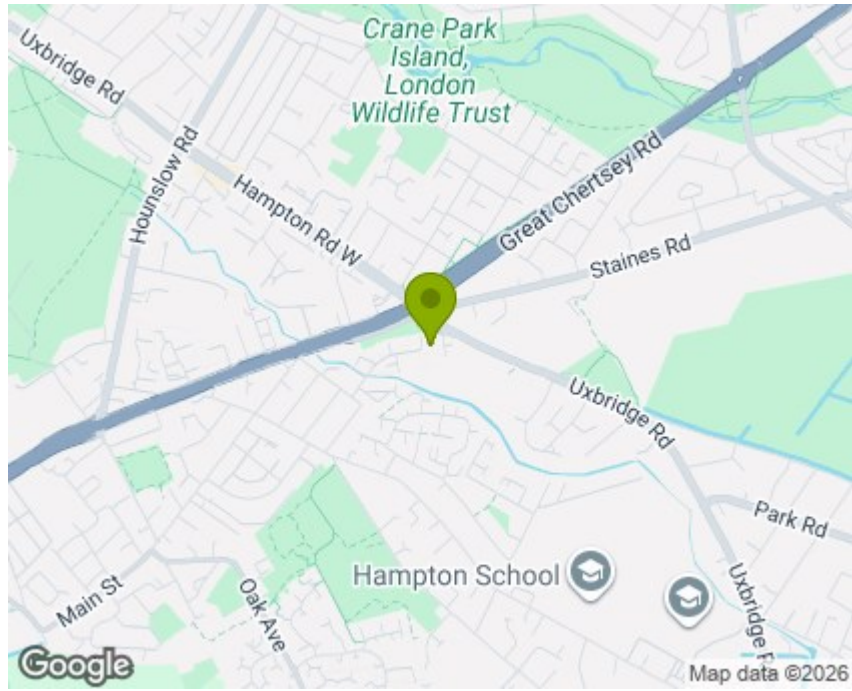
The home features a private rear garden, providing a delightful outdoor space for relaxation and play. Additionally, on road parking and a garage in a nearby block enhance the practicality of this residence. With no onward chain, this property is ready for you to move in and make it your own.

Location is key, and this home does not disappoint. It is well-positioned near local shops, schools, and green spaces, ensuring that all your daily needs are within easy reach. For those who commute it offers excellent transport links, while the proximity to Heathrow Airport, the A316, M25, and M3 makes travel to London and the south of England straightforward.

This property is not only an ideal family home but also presents a fantastic investment opportunity. With its spacious living areas and convenient location, it is sure to appeal to a wide range of buyers. Don't miss the chance to view this delightful home that perfectly balances modern living with a sense of community.



Directions from Milestone and Collis Sales 86 Heath Rd, Twickenham TW1 4BW Head towards Heath Rd/A305/A311 3 min (0.4 mi) Follow A305 to Swan Rd in Feltham 9 min (2.3 mi) Follow Swan Rd, Riverdale Rd and Stourton Ave to your destination 2 min (0.4 mi) TW13 6LE Stourton Ave, Feltham



TW13 6LE lies on Stourton Avenue in Feltham. TW13 6LE is located in the Hanworth Village electoral ward, within the London borough of Hounslow and the English Parliamentary constituency of Feltham and Heston. The Sub Integrated Care Board (ICB) Location is NHS North West London ICB - W2U3Z and the police force is Metropolitan Police.

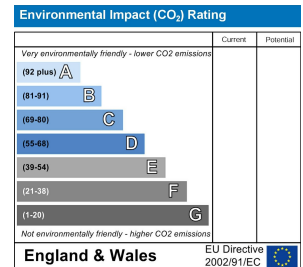
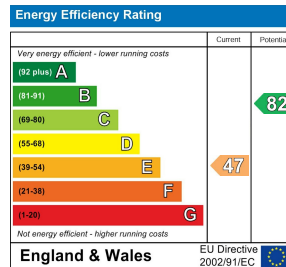
Nearest Schools

- Hampton High, State School, 0.4 miles
- Crane Park Primary School, State School, 0.5 miles
- Buckingham Primary School, State School, 0.5 miles
- Hampton School, independent School, 0.5 miles

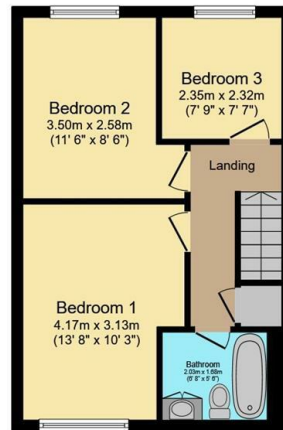
NEAREST STATIONS

- Fulwell Station, 1.2 miles
- Hampton Station, 1.3 miles
- Whitton Station, 1.4 miles

Council tax band D



Ground Floor



First Floor

Total floor area 82.9 sq.m. (892 sq.ft.) approx

This floor plan is for illustrative purposes only. It is not drawn to scale. Any measurements, floor areas (including any total floor area), openings and orientation are approximate. No details are guaranteed, they cannot be relied upon for any purpose and they do not form part of any agreement. No liability is taken for any error, omission or misstatement. A party must rely upon its own inspection(s). Powered by www.focalagent.com

It is our aim to provide particulars that are both accurate and reliable but they are not guaranteed and would not form part of any offer or contract. Please contact us if you require clarification and we would be happy to assist. Please also note that the appliances and heating system have not been tested and therefore, no warranties can be given as to their condition.