



Walkers
People & Property

Baymans Wood, Shenfield, CM15 8BT
£1,895,000

Baymans Wood

Shenfield, Brentwood

A beautifully appointed five-bedroom, three-bathroom detached family home, set within an exclusive cul-de-sac in Shenfield. Perfectly positioned for local schools and Shenfield High St & station ..

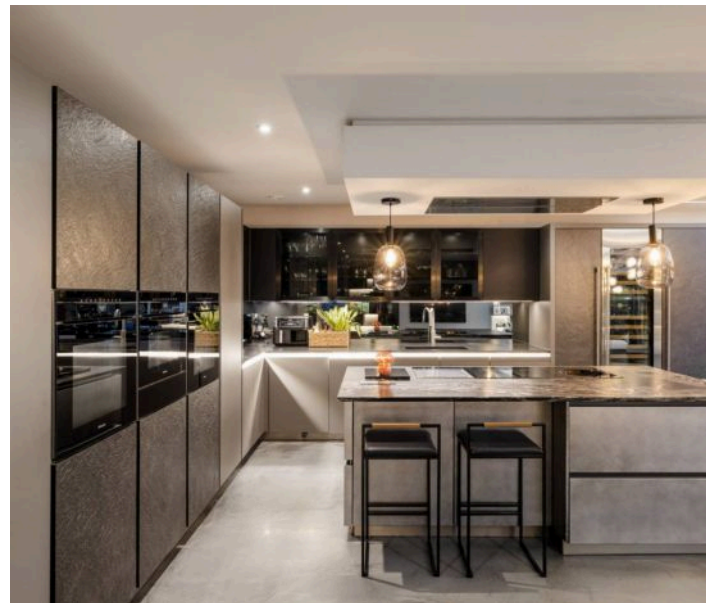
Council Tax band: H

Tenure: Freehold

EPC Energy Efficiency Rating: B

EPC Environmental Impact Rating: C

- Situated on a popular cul-de-sac in Shenfield
- 3,100 sq ft (excluding garage and loft space)
- Expansive, dual-aspect open-plan kitchen / dining / reception room
- Two utility rooms
- Double garage with accessible loft space
- Outbuilding currently utilised as a gym





12 Baymans Wood

Shenfield, Brentwood

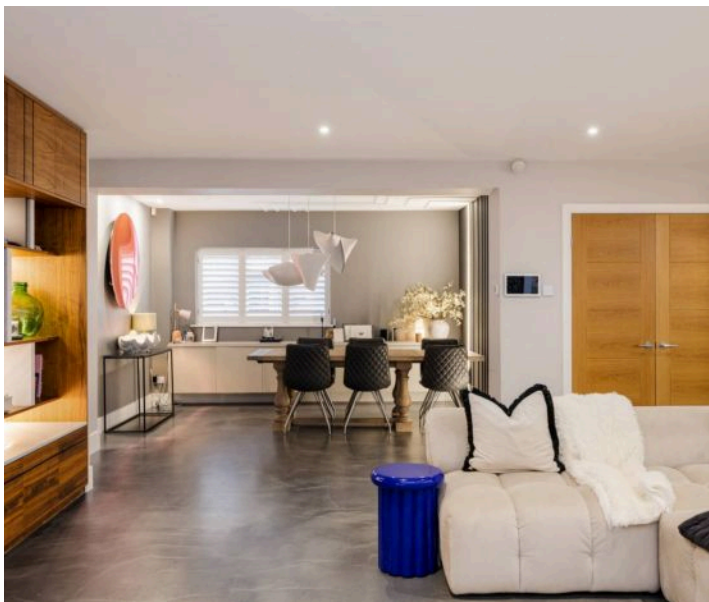
A beautifully appointed five-bedroom, three-bathroom detached family home, set within an exclusive cul-de-sac in Shenfield. Perfectly positioned for local schools, Shenfield High Street and fast Elizabeth Line links into London, this contemporary residence offers generous living accommodation of over 3,100 sq ft (excluding garage and loft space), finished to an exceptional standard throughout.

Approached via a resin driveway with ample parking and a detached double garage, the property opens into a large, welcoming entrance hall with tiled flooring and elegant internal doors.

The heart of this home is the striking open-plan kitchen / dining / reception room, an expansive dual-aspect space designed for modern living and entertaining. Flooded with light from two large roof lanterns, the room features: bespoke island with integrated hob and breakfast seating, extensive contemporary cabinetry with LED lighting, premium appliances including double ovens and wine cooler, feature dining area, full-width living zone with bespoke media wall and contemporary fire.

Large sliding doors provide a seamless connection to the garden, offering an ideal indoor/outdoor lifestyle.

A separate playroom/snug sits just off this space, offering versatility as a second lounge, children's room or cinema room. A fully fitted study provides an ideal work-from-home environment, and the ground floor also includes a wc, walk-in storage and two useful utility rooms with access to the side.











Total Area: 294.5 m² ... 3170 ft² (excluding garage loft, garage)
 All measurements are approximate and for display purposes only

Psst... Have you heard of

Walkers discreet marketing?

Many people lose out on their dream home to someone in a better position.

Often, it is because they have delayed putting their house on the market, preferring to find somewhere first and then sell,

That is why we have innovated a totally unique and highly confidential moving home solution to put you in a competitive position.

Let us find you a buyer **without any advertising or pressure** and without the neighbours knowing.

Your secret is safe with us....

Get in touch for a complimentary valuation.

Looking To Sell Or Let Your Home?

Book your free valuation to see how much your home is worth.

Contact Us
01277 355005



Our Website

www.walkersstates.co.uk



Our Address

90 High Street
Ingatstone
CM4 9DW



www.walkersstates.co.uk

About Us

Walkers | People & Property is built on a lifelong family passion for homes. Martin, Gillian and Adam Walker lead a respected, professional team who live and breathe all aspects of property. With over 30 years of experience, we understand the moving process on a personal level and are committed to delivering exceptional results. Most of all, helping people move is our hobby, and handing over the keys to excited buyers remains our favourite moment.

Get In Touch



Browse Properties

